

TABLE OF CONTENTS

Patient Positioning	3
Midmark Articulating Knee Crutch System	3
Midmark Standard Knee Crutch System	4
Knee Bolster Pad for Smith & Nephew T-max (BB-WEDGE-2718505)	4
Single Loop Leg Prep	5
Allen Yellofin Lift-Assist Stirrups (OEM# O-YFASI)	5
Surgical Peg Board Positioner System for Lateral Positioning 50in	6
Mayfield Headrest - Basic Headrest	7
Steris Narrow Headrest Lightweight, Radiolucent Head Support	7
Steris 9 inch Urology Extension	7
Shutt Universal Stress Post	8
Smith & Nephew T-max Storage Rolling Cart (OEM: 7210553)	8
Smith & Nephew Tenet T-max Non Operative Armboard (PN:7210559)	9
Hana/ProFX Style Positioning Kit	10
24" L Horizontal Traction Tower	10
Steris BF717 Arthroscopy Knee Positioner	11
Total Knee Stabilizer Leg Support	13
Stand Alone leg Prep	14
Under Pad Mount Arm and Hand Surgery Table W/Single Leg	16
Elbow arthroscopy positioner with pad	17
Smith & Nephew Tenet T-max Shoulder Positioner	19
Allen Table Powered Beach Chair	19
Carter bent traction arm assembly	21
ISI Surgical Carter Hand Surgery Table	21
ISI Surgical Carter Hand Surgery Table Extension Pad - 1in	22
SANDBAG RED 1.5 LBS for Carter Hand Surgery Table	22
Sandbag, Blue 2.5 LBS for Carter Hand Surgery Table	23
Sandbag, 5lbs. Gold for Carter Hand Surgery Table	23
ISI Surgical Carter Hand Surgery Table Extension Pad - 2.5in	24
TransMotion Medical Carter Hand Surgery Table	24
Smith & Nephew Tenet Spider Shoulder Positioner	25
T-Rail Clamp - Imaging Bariatric For CFPMB Table w/ Clamp Groove- 6in long	25
T-Rail Clamp - Imaging For CFPM tables w/ clamp groove- 6in long	26

Spine Positioning System II 8 Piece System	26
Interventional Supine Pillow System Contoured Pad and Support Wedge Pad	27
Fluro Extender Polycarbonate	27
Carbon Fiber Arm Board 6in wide- 2in Pad	28
Carbon Fiber Arm Board 6in wide- 1in Pad	28



PATIENT POSITIONING

Our catalog consists of brand new, reconditioned and refurbished equipment. Would you like to filter the equipment by:

[BRAND NEW](#)

[RECONDITIONED](#)

[REFURBISHED](#)



MIDMARK ARTICULATING KNEE CRUTCH SYSTEM

The **Midmark Articulating Knee Crutch System (Part number 9A411002)** offers a flexible and adjustable solution for supporting patients' knees and legs during examinations on Ritter 230 or Midmark 630 procedure tables. The system includes a bracket set and two knee crutches, featuring a unique ball-socket design that provides a maximum range of adjustment to accommodate various patient sizes and positioning needs. This latex-free system enhances comfort and stability during procedures, ensuring optimal patient support. Please note that the product image is for illustration purposes only; the exam table or chair is sold separately.

[Read More](#)

SKU: AM-9A411002



MIDMARK STANDARD KNEE CRUTCH SYSTEM

The **Midmark Standard Knee Crutch System (Part number 9A410002)** is a versatile support accessory designed for use with Ritter 230 and Midmark 630 procedure tables. Specifically intended to support patients' knees and legs during examinations, this latex-free system enhances patient comfort and stability. Please note, this system does not include the bracket set (Parts 9A412001, 9A412003, or 9A412005), which are required for specific table models. Please also note, product image is for illustration purposes only, exam table/chair sold separately. The Knee Crutch System provides a reliable, ergonomic solution to facilitate patient positioning and support during clinical procedures.

[Read More](#)

SKU: AM-9A410002



KNEE BOLSTER PAD FOR SMITH & NEPHEW T-MAX (BB-WEDGE-2718505)

The **Knee Bolster Pad for Smith & Nephew T-max** (BB-WEDGE-2718505) is a versatile, reusable knee positioning wedge designed for a wide range of procedures. Measuring 27" in length and 18" in width, it rises to 7" at the highest point and slopes down to 5", providing comfortable, precise support for lower extremity positioning. Crafted from high-density foam with a fusion stretchable cover, this cleanable pad includes a leg elevator wedge positioner and is available in custom sizes to fit specific surgical setups.

LEAD TIME: 2 Weeks

[Read More](#)

SKU: 7210560

Price: \$995.00



SINGLE LOOP LEG PREP

Mid Central Medical's Single Loop Leg Prep is a durable leg-prep accessory crafted from 5/8" stainless steel with a soft molded pad for comfortable prep. It adjusts height up to 30" and supports up to 50 pounds, mounting securely with standard Clark sockets (sold separately). A wipe-clean pad is included for easy sanitation between patients, making it a reliable addition to any surgical setup.

[Read More](#)

SKU: AM-MCM157

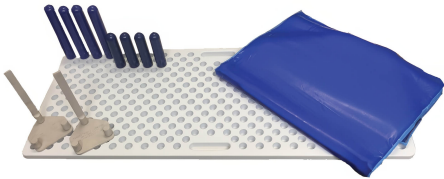


ALLEN YELLOFIN LIFT-ASSIST STIRRUPS (OEM# O-YFASI)

The **Allen Yellofin Lift-Assist Stirrups** (Hill-Rom/Allen OEM#: O-YFASI) are designed to enhance patient safety and ease of use during a variety of surgical procedures, including GYN, urological, laparoscopic, robotic, and colorectal procedures. These stirrups utilize patented Lift-Assist™ technology to neutralize the weight of the patient's leg, allowing for effortless positioning and reducing the risk of back injuries for surgical staff. The unique lateral safety fin minimizes the risk of peroneal nerve injuries, a common concern with traditional stirrups. Additional features include a floating boot for calf pressure reduction, a squeeze grip handle for sterile intraoperative adjustments, lithotomy and length indicators for precise positioning, a dual-bar design to prevent medial leg drop, and easy-to-clean welded pads with removable silicone straps for infection control. With a patient weight capacity of up to 350 lbs and compatibility with any OR table and conventional electro-surgical instruments, the Allen Yellofin Lift-Assist Stirrups are a reliable choice for healthcare facilities.

[Read More](#)

SKU: AM-YELFIN



SURGICAL PEG BOARD POSITIONER SYSTEM FOR LATERAL POSITIONING 50IN

The **Surgical Peg Board Positioner System for Lateral Positioning** is an essential tool in medical settings, designed to enhance patient safety and comfort during surgical procedures. This comprehensive system includes a peg board measuring 47 inches in length, 19 inches in width, and 1 inch in thickness, providing a stable and reliable surface for patient positioning. It comes equipped with four 6-inch and four 9-inch radiolucent standard pegs, allowing for customizable and secure lateral positioning that does not interfere with imaging processes. Additionally, the system features two safety clamps to ensure that the pegs remain securely in place throughout the procedure. To further enhance patient comfort, a large gel pad, measuring 50 inches in length and 24 inches in width with a thickness of 0.5 inches, is included. This gel pad provides cushioning and helps to evenly distribute pressure, reducing the risk of pressure sores and improving overall patient experience during surgery.

[Read More](#)

SKU: WSHP0100-LP

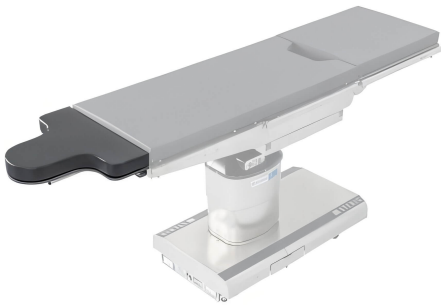


MAYFIELD HEADREST - BASIC HEADREST

The **Mayfield Headrest - Basic Headrest** is expertly designed to offer superior cranial stabilization in both prone and supine positions, ensuring optimal patient comfort and safety during medical procedures. It features both lateral and vertical mobility, allowing for precise positioning of the patient's head, which aids in better distribution of weight and forces to effectively combat pressure necrosis. The headrest comes with an A1011/1012 Adult Horseshoe headrest and a powder-coated frame for enhanced durability. To maintain hygiene and extend the product's life, replacement gel pads are available individually. Additionally, the headrest is equipped with a new vinyl foam pad, providing an extra layer of comfort. The product is backed by a six-month warranty covering any manufacturer's defects, underscoring its quality and reliability.

[Read More](#)

SKU: AM-MFHR-Basic



STERIS NARROW HEADREST LIGHTWEIGHT, RADIOLUCENT HEAD SUPPORT

BF592- The radiolucent, Narrow Headrest with its elongated tapered edge provides easier temporal and over-the-brow access to head area for ophthalmic, ENT, neuro and plastic surgery. This fixed height headrest fits into the STERIS surgical table's back section or leg section by way of a required Eye-ENT-Neuro Adaptor. The Eye-ENT-Neuro Headrest Adaptor is sold separately. This accessory includes a 2 1/4" pressure management pad.

Special Note(s): The Eye-ENT-Neuro Headrest Adaptor is required (sold separately). Order BF185 for 3085 tables, BF173 for 5085, 4085, and Cmax tables, or BF309 for 5085SRT.

[Read More](#)

SKU: AM-BF592



STERIS 9 INCH UROLOGY EXTENSION

This lightweight 9-inch long radiolucent extension provides additional fluoro imaging length for imaging of kidney, ureter and bladder (KUB) anatomy of tall patients. It easily attaches to the seat section of the table once the leg section is removed, and includes standard side rails for applying leg holders or Fluid Collector System. The perineal cutout will accommodate a metal drain pan.

For Steris 4085, 5085 Tables only

[Read More](#)

SKU: AM-BF578



SHUTT UNIVERSAL STRESS POST

The **Shutt Universal Stress Post** is a versatile and innovative device designed to enhance the efficiency and safety of meniscal repair procedures. Its break-away design allows for the use of the "figure 4" position, a technique often employed to improve access and visibility during surgery. This unique design feature not only facilitates the procedure but also enhances patient comfort. The stress post includes a hook-and-loop closure insert that securely grips the tourniquet, ensuring stability and minimizing the risk of slippage. Additionally, foam inserts are incorporated to reduce patient trauma by providing cushioning and support, thus enhancing overall patient care during the procedure. The breakaway stress post exemplifies the thoughtful integration of functionality and patient safety in surgical equipment design.

[Read More](#)

SKU: SP-LNVRT



SMITH & NEPHEW T-MAX STORAGE ROLLING CART (OEM: 7210553)

Smith & Nephew T-MAX Cart (OEM/Catalog #7210553) is the dedicated storage and transport cart for the T-MAX Beach Chair shoulder positioning system. The cart includes purpose-built storage points—front hook for the lift system release handle, cylinder rests, side storage hook for the arm board post, and a lower clamp post for the square rail clamps—supporting organized storage and efficient movement of the T-MAX system between cases.

Only the rolling cart in photo included.

[Read More](#)

SKU: 7210553-R

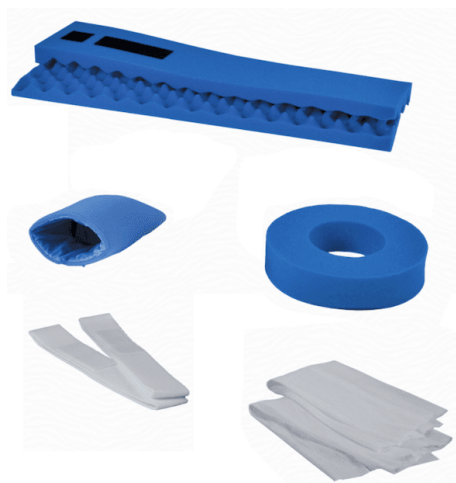


SMITH & NEPHEW TENET T-MAX NON OPERATIVE ARMBORD (PN:7210559)

The **Smith & Nephew Tenet T-max Non Operative Armboard**, with part number 7210559, represents a pivotal innovation in patient care and comfort during various medical procedures that do not require surgery. This specialized armboard is designed to enhance the stability and positioning of a patient's arm, ensuring both safety and accessibility for healthcare providers. Its unique design accommodates a wide range of patient sizes and procedural requirements, making it a versatile tool in non-operative settings. The Tenet T-max armboard is crafted with patient comfort and healthcare efficiency in mind, highlighting Smith & Nephew's commitment to developing high-quality, patient-centric medical equipment. This armboard is an essential component for clinics and hospitals, aiming to improve the overall experience and outcomes of non-operative patient care.

[Read More](#)

SKU: 7210559-R



HANA/PROFX STYLE POSITIONING KIT

Hana® ProFx® style procedural kit is designed to fit the Hana/ProFx® table system.

9in Donut Headrest, Arm Board (Set of 2), Armboard Straps (Set of 2) , Ball/Joint Cover (Set of 2) Perineal Post Cover

Comparable to: Mizuho OSI's 6855

Don't see the component configuration you're needing? Contact us for additional assistance.

[Read More](#)

SKU: AM-PFXH-1000



24" L HORIZONTAL TRACTION TOWER

- Solid stainless steel construction.
- Adapts easily to end of most arm and hand tables.
- 3/4" outside diameter square tube with 1/2" telescoping tube provides the strongest and most dependable device available.
- Comes complete with all necessary hardware.

To submit a quote request for this product please fill out the form below.
Product Quote Request

Name

*

Name

Name

Name

Company Name
*

Email
*

Phone
*

Shipping Zip Code
*

Quantity
*

Quantity *
Captcha

Submit Quote Request for Product

Δ

[Read More](#)

SKU: AM-MCM345



STERIS BF717 ARTHROSCOPY KNEE POSITIONER

The Arthroscopy Knee Holder attaches to the seat section of the table with a Clark Socket (not included) and is typically used for the "off the end" of the table arthroscopy technique. The diameter of the knee holder can be adjusted as surgical needs dictate. A three piece cushion set is included.

To submit a quote request for this product please fill out the form below.
Product Quote Request

Name

*

Name

Name

Name

Company Name

*

Email

*

Phone

*

Shipping Zip Code

*

Quantity

*

Quantity *

Captcha

Submit Quote Request for Product



[Read More](#)

SKU: AM-BF717



TOTAL KNEE STABILIZER LEG SUPPORT

Total Knee Stabilizer Leg support Stainless steel adj. 16in flat rod w/ 10inL support bar covered with 3.5india foam pad

Helps support legs for total knee replacement procedures. Constructed of stainless steel and polyoxy-methylene for ultimate support. Top portion is radiolucent. 5/8" diameter stainless steel post fits into Clark Socket (sold separately).

To submit a quote request for this product please fill out the form below.
Product Quote Request

Name

*

Name

Name

Name

Company Name

*

Email

*

Phone

*

Shipping Zip Code

*

Quantity

*

Quantity *

Captcha

Submit Quote Request for Product

Δ

[Read More](#)

SKU: AM-MCM612



STAND ALONE LEG PREP

This is the new stand alone leg prep from Mid Central Medical. There are many types of leg preppers in the industry that mount directly to the surgical table rail and support patients lower limbs.

To submit a quote request for this product please fill out the form below.
Product Quote Request

Name

*

Name

Name

Name

Company Name

*

Email

*

Phone

*

Shipping Zip Code

*

Quantity

*

Quantity *

Captcha

Submit Quote Request for Product



[Read More](#)

SKU: AM-MCM154



UNDER PAD MOUNT ARM AND HAND SURGERY TABLE W/SINGLE LEG

The Under Pad Mount Arm and Hand Surgery Table with Single Post Leg is designed for use with surgery tables and stretchers without side rails. The rugged, stainless steel frame construction has been designed to last. Setup is quick and easy, simply slip the table under the pad, the patient won't even feel it.

The clear, radiolucent polycarbonate section of the table measures 14" wide by 24" long, providing ideal C-arm access. The overall dimensions of the table are 47" by 18" wide, while the exposed table length measures 32". The convenient handle and quick release knob allows for easy carrying and storage. The single collapsible leg can easily be adjusted from 27" up to a maximum of 39" in length to match the height of the operating table or stretcher.

To submit a quote request for this product please fill out the form below.
Product Quote Request

Name

*

Name

Name

Name

Company Name

*

Email

*

Phone

*

Shipping Zip Code

*

Quantity

*

Quantity *

Captcha

Submit Quote Request for Product

Δ

[Read More](#)

SKU: AM-MCM340



ELBOW ARTHROSCOPY POSITIONER WITH PAD

Elbow arthroscopy positioner with pad

To submit a quote request for this product please fill out the form below.
Product Quote Request

Name

*

Name

Name

Name

Company Name

*

Email

*

Phone

*

Shipping Zip Code

*

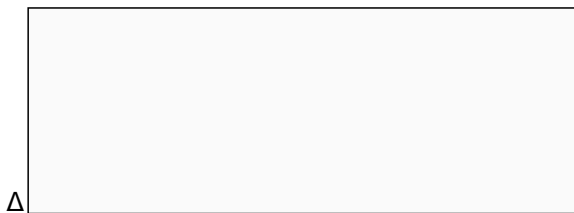
Quantity

*

Quantity *

Captcha

Submit Quote Request for Product



Δ

[Read More](#)

SKU: AM-MCM450

SMITH & NEPHEW TENET T-MAX SHOULDER POSITIONER

Smith & Nephew Tenet T-max Shoulder Positioner Fully Refurbished

- Designed to attach to the rails of almost any OR Table
- Superior head adjustment allows for infinite positions of tilt, rotation, and forward slide of the head
- Sliding shoulder pad, and posterior placement allows for unparalleled access to the surgical site
- Adjustability - Hydraulic assist mechanism allows any angle from sitting to supine (0-90°)

[Read More](#)

SKU: AM-TMAX-7210996





ALLEN TABLE POWERED BEACH CHAIR

The Table-Powered Beach Chair easily attaches to the leg section of your surgical table and positions the patient using the power of the table! Effortlessly positions patients throughout the 0° - 90° articulation range.

To submit a quote request for this product please fill out the form below.
Product Quote Request

Name

*

Name

*

Name

*

Name

*

Company Name

*

Email

*

Phone

*

Shipping Zip Code

*

Quantity

*

Quantity *

Captcha

Submit Quote Request for Product



Δ

[Read More](#)

SKU: AM-A-90000

CARTER BENT TRACTION ARM ASSEMBLY

Bent traction arm assembly

[Read More](#)

SKU: DSC-CST-27001





ISI SURGICAL CARTER HAND SURGERY TABLE

The Carter Hand Surgery Table accommodates stable traction then quickly converts to a legless table. Known for years as the ultimate hand table, the Carter Hand Surgery Table allows for easy application of traction during procedures. When traction is not in use, the unique cantilever design eliminates the need for supporting legs, making it ideal for any hand procedure

[Read More](#)

SKU: DSC-CST-2007

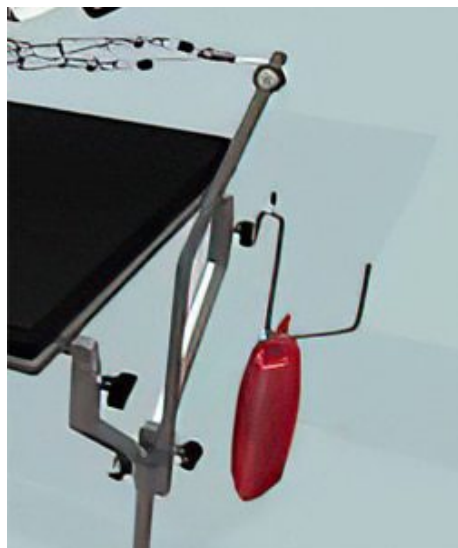


ISI SURGICAL CARTER HAND SURGERY TABLE EXTENSION PAD - 1IN

ISI Surgical Carter Hand Surgery Table Extension Pad - 1in (Pad Only)
Designed to fit the Carter Hand Table Extension

[Read More](#)

SKU: DSC-CST-27040

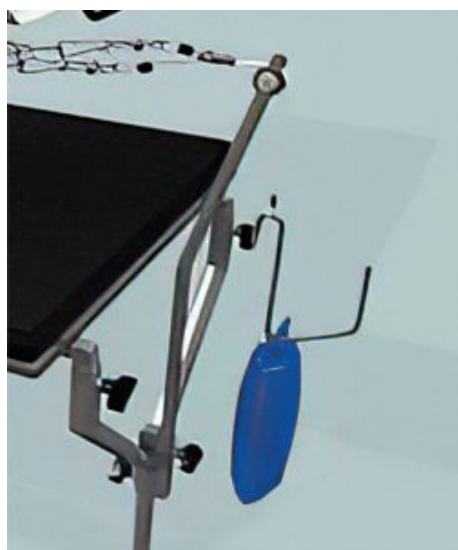


SANDBAG RED 1.5 LBS FOR CARTER HAND SURGERY TABLE

SANDBAG RED 1.5 LBS

[Read More](#)

SKU: DSC-CST-0352-RED



SANDBAG, BLUE 2.5 LBS FOR CARTER HAND SURGERY TABLE

SANDBAG Blue 2.5 LBS

[Read More](#)

SKU: SANDBAG Blue 2.5 LBS



SANDBAG, 5LBS. GOLD FOR CARTER HAND SURGERY TABLE

Sandbag, 5lbs. Gold

[Read More](#)

SKU: DSC-CST-0357



ISI SURGICAL CARTER HAND SURGERY TABLE EXTENSION PAD - 2.5IN

Designed to fit the Carter Hand Table Extension

Dimensions:

15.5" x 6" x 2.5"

[Read More](#)

SKU: DSC-CST-27040-2.5



TRANSMOTION MEDICAL CARTER HAND SURGERY TABLE

ONLY FOR TRANSMOTION MEDICAL CHAIRS

The TransMotion Medical Carter Hand Surgery Table (#TMA87-15) comes complete with a height adjustable leg, 1" foam pad, traction, and carrying case. Developed by Doctor Peter Carter, this top-of-the-line table is radiolucent, height adjustable, and features an optional adjustable-length pad that adapts to individual patient arm lengths. It safely and securely clips onto the surgical rail of all TMM4 and TMM5 series stretcher-chairs. The traction accessories easily disassemble and can be conveniently stored in the compact carrying case.

[Read More](#)

SKU: TMA87-15



SMITH & NEPHEW TENET SPIDER SHOULDER POSITIONER

Used in Beach Chair and lateral positions for arthroscopic rotator cuff, instability, total shoulder and humeral nailing.

[Read More](#)

SKU: AM-TENET-SPIDER

T-RAIL CLAMP - IMAGING BARIATRIC FOR CFPMB TABLE W/ CLAMP GROOVE- 6IN LONG



Designed for use with CFPMB Imaging Tables.
Attaches to a groove on the underside of the tabletop.

[Read More](#)

SKU: 71679

T-RAIL CLAMP - IMAGING FOR CFPM TABLES W/ CLAMP GROOVE- 6IN LONG



Designed for use with CFPM Imaging Tables
Attaches to a groove on the underside of the tabletop.

[Read More](#)

SKU: 63336

SPINE POSITIONING SYSTEM II 8 PIECE SYSTEM



An integral component of the pain management suite. Improves visualization of the necessary anatomic landmarks for safe and accurate spinal injections. Solves imaging, stability, and patient comfort issues associated with spine procedures. The design provides greater visualization of the cervical, thoracic and lumbar spine including the cervicothoracic junction regardless of the patient's body habitus. Comes with portable case for clean transport and storage. FDA Listed, CE Marked.

[Read More](#)

SKU: 81819

INTERVENTIONAL SUPINE PILLOW SYSTEM CONTOURED PAD AND SUPPORT WEDGE PAD



Supports patient's neck in a position of comfort to reduce muscle spasms. Secures the cervical spine in either neutral or rotation. Creates an unobstructed working space for physicians' hands.

[Read More](#)

SKU: 81821

FLUORO EXTENDER POLYCARBONATE

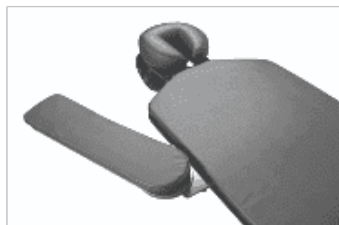


Made of a cost-effective radiolucent material - polycarbonate. The shape is conducive to a variety of table placement applications. 30" wide x 23.5" long x 1/4" thick. Can be used with any fluoroscopy table. Inserts under the tabletop pad and requires no attachment hardware.

[Read More](#)

SKU: 33975

CARBON FIBER ARM BOARD 6IN WIDE- 2IN PAD

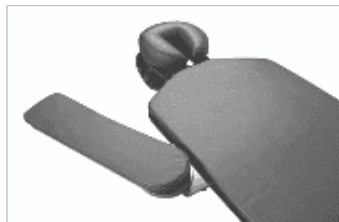


Fully radiolucent. 180° range of motion. Comes with a removable pad. Requires no mounting or attachment hardware - slides under the tabletop pad. Compatible with any model Pain Management C-Arm table. Folds together for safe and compact storage. Slides under the tabletop pad and can easily support the arm in a positional range of 180°.

[Read More](#)

SKU: 83575

CARBON FIBER ARM BOARD 6IN WIDE- 1IN PAD



Fully radiolucent. 180° range of motion. Comes with a removable pad. Requires no mounting or attachment hardware - slides under the tabletop pad. Compatible with any model Pain Management C-Arm table. Folds together for safe and compact storage. Slides under the tabletop pad and can easily support the arm in a positional range of 180°.

[Read More](#)

SKU: 81822

INDEX

2

24" L Horizontal Traction Tower 8

A

Allen Table Powered Beach Chair 18

Allen Yellofin Lift-Assist Stirrups (OEM# O-YFASI) 4

C

Carbon Fiber Arm Board 6in wide- 1in Pad 27

Carbon Fiber Arm Board 6in wide- 2in Pad 26

Carter bent traction arm assembly 19

E

Elbow arthroscopy positioner with pad 16

F

Fluoro Extender Polycarbonate 26

H

Hana/ProFX Style Positioning Kit 8

I

Interventional Supine Pillow System Contoured Pad and Support Wedge Pad 25

ISI Surgical Carter Hand Surgery Table 20

ISI Surgical Carter Hand Surgery Table Extension Pad - 1in 20

ISI Surgical Carter Hand Surgery Table Extension Pad - 2.5in 22

K

Knee Bolster Pad for Smith & Nephew T-max (BB-WEDGE-2718505) 3

M

Mayfield Headrest - Basic Headrest 5

Midmark Articulating Knee Crutch System 2

Midmark Standard Knee Crutch System 2

S

SANDBAG RED 1.5 LBS for Carter Hand Surgery Table 21

Sandbag, 5lbs. Gold for Carter Hand Surgery Table 22

Sandbag, Blue 2.5 LBS for Carter Hand Surgery Table 21

Shutt Universal Stress Post 6

Single Loop Leg Prep 3

Smith & Nephew T-max Storage Rolling Cart (OEM: 7210553) 7

Smith & Nephew Tenet Spider Shoulder Positioner 23

Smith & Nephew Tenet T-max Non Operative Armboard (PN:7210559) 7

Smith & Nephew Tenet T-max Shoulder Positioner 17

Spine Positioning System II 8 Piece System 25

Stand Alone leg Prep 13

Steris 9 inch Urology Extension 6

Steris BF717 Arthroscopy Knee Positioner 10

Steris Narrow Headrest Lightweight, Radiolucent Head Support 5
Surgical Peg Board Positioner System for Lateral Positioning 50in 4

T

T-Rail Clamp - Imaging Bariatric For CFPMB Table w/ Clamp Groove- 6in long 24

T-Rail Clamp - Imaging For CFPM tables w/ clamp groove- 6in long 24

Total Knee Stabilizer Leg Support 11

TransMotion Medical Carter Hand Surgery Table 23

U

Under Pad Mount Arm and Hand Surgery Table W/Single Leg 14