

TABLE OF CONTENTS

Storage / Drying Cabinets	3
Instrument Cabinet 18"D x 36"W x 68"H, Slope Top, w/ Casters	4
Harloff SureDry Painted Low Carbon Steel 24" Wide Scope Drying Cabinet, Capacity of 6 Scopes, Tempered Glass Double Doors, Key Locking, Positive Pressure HEPA Filter Drying System	5
Olympic Model 44 Drying Cabinet	6
ENT Scope Drying Cabinet, Wall Mount, Key Lock, 30" H x 24" W	6
SureDry Painted Low Carbon Steel 36" Wide Scope Drying Cabinet, Capacity to 14 Scopes, Tempered Glass Double Doors, Key Locking ...	7
Staber Model 2230 (4 Shelf, Stainless Steel) Drying Cabinet	8
Harloff Bronchoscope Drying Cabinet, Wall Mount, Key Lock (SCW2448DRDP)	8
Harloff Bronchoscope and ENT Small Scope Drying Cabinet, 10 Capacity, Key Lock (SC5430DRDP)	9
Harloff ENT Scope Storage Cabinet, Wall Mount, Key Lock (SCW2430DR)	10
Staber Powder Coated White Full Size Single Door Medical Equipment Drying Cabinet 5 Shelf	11
Staber Powder Coated White Full Size Single Glass Door Medical Equipment Drying Cabinet 5 Shelf	12
Staber Stainless Steel Full Size Single Stainless Door Medical Equipment Drying Cabinet 5 Shelf	13
Staber Model 2230 (10 Shelf, Stainless Steel) Drying Cabinet	14
Staber Model 2230 (10 Shelf, Powder Coat White Steel) Drying Cabinet	15
Staber Model 2230 (4 Shelf, Powder Coat White Steel) Drying Cabinet	15
SureDry Painted Low Carbon Steel 36" Wide Scope Drying Cabinet, 14 Scopes, Tempered Glass Double Doors, Positive Pressure HEPA Filter Drying w/ Dri-Scope Aid® Package	16
24"D X 42"W X 92"H, Scope Cabinet, Flat Top, Glass hinged doors, Standard Handles, 22 Scope Hangers	17
24"D X 36"W X 92"H, Scope Cabinet, Flat Top, Glass hinged doors, Standard Handles, 18 Scope Hangers	17
24"D X 42"W X 92"H, Scope Cabinet, Flat Top, Glass hinged doors,	

Standard Handles, 22 Scope Hangers, Power Vent	18
18"D X 42"W X 92"H, Scope Cabinet, Flat Top, Glass hinged doors, Standard Handles, 11 Scope Hangers, Power Vent	19
18"D X 42"W X 92"H, Scope Cabinet, Flat Top, Glass hinged doors, Standard Handles, 11 Scope Hangers, Power Vent	19
18"D X 42"W X 92"H, Scope Cabinet, Flat Top, Glass hinged doors, Standard Handles, 11 Scope Hangers	20
Harloff SS2310 Scope Drying Cabinet (Capacity of 8 Scopes)	21
Harloff SureDry Painted Low Carbon 60" Wide Steel Scope Drying Cabinet, Capacity of 10 Scopes each cabinet Tempered Glass Double Doors, Key Locking.	22
Scope Cabinet - 18 Scope Hangers with Power Vent (24"D X 36"W X 92"H)	23
Harloff Sure-Dry Painted 60 wide scope drying area for up to 20 scopes	24
Staber Powder Coat White Countertop Solid Door Instrument Drying Cabinet	25
Staber Stainless Steel Full Size Double Door Large Capacity Medical Instrument Drying Cabinet	26
Staber Stainless Steel Full Size Single Door Medical Instrument Drying Cabinet	26
Harloff Single Column Mobile Cabinet with Key Locking doors with tempered glass with 4 divider shelves	27
Harloff Sure-Dry Stainless Steel 41" wide scope drying area for up to 18 scopes (SCSS5430DRDP)	28
Harloff Sure-Dry Stainless Steel 41" wide scope drying area for up to 18 scopes	28



STORAGE / DRYING CABINETS

MEDICAL STORAGE AND DRYING CABINETS

Medical storage and drying cabinets are essential materials in the day-to-day operations of hospitals and medical practices. Not only do they ensure that the medical supplies are kept organized, they also help protect them from contamination and keep them dry, which means they remain in good condition. Auxo Medical provides a variety of medical storage and drying cabinets to meet the needs of these establishments.

Auxo Medical has a wide selection of storage and drying cabinets for medical practices and hospitals to choose from. Some of the benefits that their cabinets provide include:

Secure and Contamination-Free

These cabinets are designed to keep medical supplies secure and contamination-free. They come with built-in security features such as key-lockable doors or secure storage compartments. Plus, the cabinets are designed to keep the contents dry, which helps to keep them from being contaminated.

Our catalog consists of brand new, reconditioned and refurbished equipment. Would you like to filter the equipment by:

[BRAND NEW](#)

[RECONDITIONED](#)

[REFURBISHED](#)



INSTRUMENT CABINET 18" D X 36" W X 68" H, SLOPE TOP, W/ CASTERS

The **Instrument Cabinet 18" D x 36" W x 68" H** with a slope top is a versatile and durable storage solution designed for easy access and efficient organization in clinical or laboratory environments. Featuring two glass doors and four adjustable shelves, it provides ample space for instruments and supplies while allowing visibility of stored items. The cabinet is equipped with a 9-inch slope top for optimal workspace ergonomics and features four swivel casters—two locking and two non-locking—for smooth mobility and stability during use. Its sturdy construction and thoughtful design make it an ideal choice for housing medical instruments or lab supplies while ensuring mobility and easy access.

Image serves simply as an illustration only. Actual specs and features as listed in the description.

[Read More](#)

SKU: MHCC93618-501



HARLOFF SUREDRY PAINTED LOW CARBON STEEL 24" WIDE SCOPE DRYING CABINET, CAPACITY OF 6 SCOPES, TEMPERED GLASS DOUBLE DOORS, KEY LOCKING. POSITIVE PRESSURE HEPA FILTER DRYING SYSTEM

The **Harloff SureDry Painted Low Carbon Steel 24" Wide Scope Drying Cabinet** is a reliable and efficient solution for endoscope drying, with a capacity to hold six scopes. It features tempered glass double doors with key locking for security and easy access. The cabinet employs a **positive pressure HEPA filter drying system** that removes 99.7% of particulates 0.3 microns and larger, ensuring a contaminant-free environment. Equipped with two intake fans and one exhaust fan, the system's fan run time is adjustable and activates each time the cabinet is closed, utilizing the **Dri-Scope Aid® package** to supply HEPA-filtered air through all internal channels for automated, thorough drying of endoscopes. The cabinet includes all necessary tubing and HEPA filters, with disposable scope attachments sold separately. A Harloff representative provides on-site setup and training, and the unit is available in 20 colors—specified on purchase order. Backed by a **12-year manufacturer's warranty**, this drying cabinet combines durability, security, and advanced drying technology for optimal endoscope maintenance.

[Read More](#)

SKU: SC8024DRDP-DSS-2305



OLYMPIC MODEL 44 DRYING CABINET

The **Olympic Model 44 Drying Cabinet** is a high-capacity sterilization drying unit equipped with nine large 18" x 18" (46 x 46 cm) parts trays, making it ideal for efficiently drying surgical instruments and medical tools. Its exterior measures 46.5" x 20.5" x 86" (118 x 52 x 218 cm), powered by 120V~, 60Hz, and 1700 watts. Each drying chamber features its own blower, providing quieter operation and increased airflow for faster, more effective drying—typically within 40 minutes—thanks to recirculating heat that captures over 80% of heated air through HEPA filters, which remove 99.97% of particles larger than 0.3 microns, including bacteria and viruses. Certified as a class 100 high-efficiency particulate air (HEPA) system, it includes safety features such as over-temperature thermal cut-offs, hospital-grade fused electrical connections, and individual testing for dielectric insulation. The cabinet is CSA C/US certified and UL listed, ensuring electrical safety and reliable performance in sterile environments.

[Read More](#)

SKU: AM-O44DC



ENT SCOPE DRYING CABINET, WALL MOUNT, KEY LOCK, 30" H X 24" W

The **Harloff ENT Scope Drying Cabinet** is a wall-mountable, key-locked storage solution designed to hold up to six ENT scopes while ensuring proper drying and optional sterilization. Measuring 30" H x 24" W x 12" D, this cabinet features a HEPA-filtered positive pressure system with two high-volume intake fans and one exhaust fan, activated automatically upon closing the doors, with an adjustable timer for fan operation ranging from 10 to 180 minutes. Customizable scope holders accommodate most common scope types, and glass-paneled doors allow for easy viewing of scope inventory. Available in stainless steel or heat-sealed powder coat low carbon steel with over 20 color options, the cabinet also offers an optional LED-UV disinfection strip with a UV-C disinfection range from 185 to 280nm, running at 270nm for optimal disinfection. Ideal for non-connected video/light processor cords, the cabinet is backed by a 12-year manufacturer's warranty for shipments to the US and Canada, a 5-year warranty for international shipments, and a



1-year limited warranty on bought-out parts.

[Read More](#)

SKU: SCW2430DRDP



SUREDRIY PAINTED LOW CARBON STEEL 36" WIDE SCOPE DRYING CABINET, CAPACITY TO 14 SCOPES, TEMPERED GLASS DOUBLE DOORS, KEY LOCKING

The **SureDry Painted Low Carbon Steel Scope Drying Cabinet** is a 36" wide, key-locking cabinet designed to hold up to 14 scopes and ensure their proper drying and storage. Featuring tempered glass double doors, this cabinet utilizes a positive pressure HEPA filter drying system with a unique configuration of two intake fans and one exhaust fan for fully redundant operation. The adjustable fan runtime activates each time the cabinet is closed, circulating air to replace the inside air four times per minute while the HEPA filter removes 99.7% of particulates .03 microns and larger. Meeting or exceeding Joint Commission, AORN, SGNA, and AAMI guidelines, the Sure-Dry cabinet includes a replaceable HEPA filter system, a secure adjustable scope mounting system for up to 14 bronchoscopes, a medical-grade electrical system, an easy-to-clean removable drip tray, and multiple locking options, all backed by a 12-year manufacturer's warranty.

[Read More](#)

SKU: SC5436DRDP-14



STABER MODEL 2230 (4 SHELF, STAINLESS STEEL) DRYING CABINET

The **Staber Model 2230 Drying Cabinet** offers a large-capacity solution for efficiently drying various medical equipment and instruments. Available in stainless steel and powder-coat white, this double-door cabinet boasts a spacious 63 cubic feet of interior space, featuring four standard shelves with a total loading area of 32 square feet. Each shelf can support up to 250 lbs, and additional shelves can be purchased for increased capacity. Wide-swinging double doors facilitate easy loading and unloading. The cabinet utilizes a 6 kW electric heating system and requires a 208-220/240V, 60 Hz, 1-phase electrical connection with a 40-amp breaker. A 6" exhaust diameter and external floor drain are incorporated for efficient moisture removal. The Staber 2230 measures 80"H x 55"W x 31"D, weighs 460 lbs net, and 630 lbs for shipping.

[Read More](#)

SKU: 820330SS-4



HARLOFF BRONCHOSCOPE DRYING CABINET, WALL MOUNT, KEY LOCK (SCW2448DRDP)

The Harloff Wall Mount Bronchoscope Drying Cabinet (SCW2448DRDP) offers a compact and efficient solution for drying and storing up to four bronchoscopes or eight smaller scopes. This cabinet utilizes a HEPA-filtered positive pressure system with two intake and one exhaust fan, activated automatically upon door closure, providing a controlled drying environment. A customizable timer allows for fan operation between 10 to 180 minutes, adhering to various facility guidelines. Glass-paneled doors enable easy inventory checks, while customizable scope holders accommodate most common scope types. An optional LED-UV disinfection strip adds extra sterilization capabilities. Available in stainless steel or powder-coated low carbon steel with over 20 color options, this cabinet complements any setting. Backed by a 12-year manufacturer's warranty and a 1-year warranty on bought-out parts, the Harloff Wall Mount Bronchoscope Drying Cabinet ensures reliable performance and peace of mind. The cabinet measures 48"H x 24"W x 12.75"D and weighs 84 lbs.

[Read More](#)

SKU: SCW2448DRDP





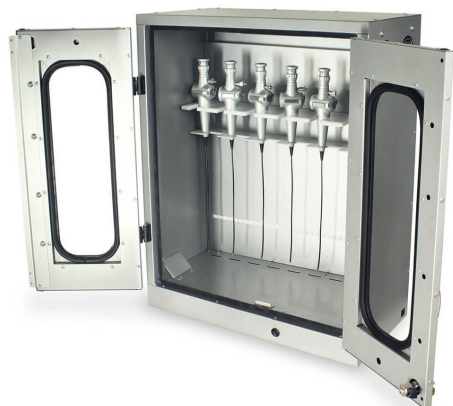
HARLOFF BRONCHOSCOPE AND ENT SMALL SCOPE DRYING CABINET, 10 CAPACITY, KEY LOCK (SC5430DRDP)

Harloff's Bronchoscope and ENT Small Scope Drying Cabinet (SC5430DRDP) provides a safe and efficient solution for drying up to ten bronchoscopes, ENT, or other small scopes. Utilizing a unique positive pressure HEPA-filtered fan system with two intake and one exhaust fan, this cabinet ensures thorough drying while removing 99.7% of particulates down to 0.03 microns. The adjustable fan run time activates upon closing, and the HEPA filter can be replaced without removing the scopes. Secure adjustable mounting keeps scopes safely in place. Featuring a medical-grade electrical system, tempered glass double doors, and a removable drip tray, this cabinet simplifies cleaning and maintenance. Multiple locking options, including badge entry, are available. Meeting or exceeding Joint Commission, AORN, SGNA, and AAMI guidelines (including ANSI/AAMI ST91:2021), this cabinet is essential for proper scope reprocessing. With customizable color and finish options and optional dimmable LED lighting, it integrates seamlessly into any facility. Assembled dimensions are 67.75"H x 30"W x 24"D, and it weighs 236 lbs.

[Read More](#)

SKU: SC5430DRDP





HARLOFF ENT SCOPE STORAGE CABINET, WALL MOUNT, KEY LOCK (SCW2430DR)

The Harloff ENT Scope Storage Cabinet (SCW2430DR) offers a secure and efficient wall-mounted solution for storing up to six ENT scopes. Its customizable scope holders accommodate most common scope types, while glass-paneled doors allow for easy inventory checks. Airflow vents ensure proper ventilation, and an optional LED-UV disinfection strip provides an added layer of sterilization. With a 12-year limited manufacturer warranty, this cabinet offers a durable and reliable storage solution, ideal for scopes with non-connected or removable video/light processor cords. The cabinet dimensions are 30"H x 24"W x 12"D, optimizing space utilization in any ENT setting.

[Read More](#)

SKU: SCW2430DR





STABER POWDER COATED WHITE FULL SIZE SINGLE DOOR MEDICAL EQUIPMENT DRYING CABINET 5 SHELF

The **Staber Powder Coated White Full Size Single Door Medical Equipment Drying Cabinet** is a versatile and efficient solution ideal for hospitals, laboratories, and manufacturers. This robust cabinet features a solid white door and is constructed from powder-coated white steel, distinct from the stainless steel depicted in promotional images. **Equipped with five shelves**, the cabinet offers ample space for drying a wide range of items, including medical instruments. It boasts dual blower motors positioned at both the top and bottom, ensuring even air distribution throughout the drying process. The electronic touch control panel, conveniently located above the door, allows for easy operation, offering five preset temperature options ranging from fan-only to a high of 150°F. Users can set drying times in 15-minute increments, up to a maximum of 10 hours. Additional features include continuous mode availability, removable full-depth shelves, and optional enhancements like a MERV10 filter, risers, and a caster base for increased flexibility and capacity. Proudly made in the USA, the Staber Drying Cabinet is a reliable choice for those seeking a high-performance drying solution.

[Read More](#)

SKU: 820225



STABER POWDER COATED WHITE FULL SIZE SINGLE GLASS DOOR MEDICAL EQUIPMENT DRYING CABINET 5 SHELF

The **Staber Powder Coated White Full Size Single Glass Door Medical Equipment Drying Cabinet** is a versatile and efficient solution for medical facilities, laboratories, and manufacturing environments. Designed with functionality in mind, this cabinet features a sleek powder-coated white steel exterior, distinguishing it from the stainless steel models depicted in promotional images. Equipped with a glass door for easy visibility, **the cabinet houses five removable shelves**, allowing for the effective drying of a variety of instruments and items. The dual blower motors, strategically positioned at the top and bottom, ensure even airflow distribution, while the top-located heating element offers consistent drying performance. Users benefit from an intuitive electronic touch control panel, which simplifies the selection of five preset drying temperatures and adjustable run times, providing flexibility and convenience. With dimensions of 23.47 inches in width, 24.21 inches in depth, and a height of 68.71 inches, the cabinet provides ample space with approximately 10 inches between shelves. Optional features such as a MERV10 filter, risers for additional capacity, and a caster base enhance its functionality, making it a robust and indispensable tool for maintaining hygiene and efficiency in professional settings.

[Read More](#)

SKU: 820225GD



STABER STAINLESS STEEL FULL SIZE SINGLE STAINLESS DOOR MEDICAL EQUIPMENT DRYING CABINET 5 SHELF

The **Staber Stainless Steel Full Size Single Stainless Door Medical Equipment Drying Cabinet**, model #820225SS, is a versatile and efficient solution for drying a wide variety of items in hospitals, laboratories, and manufacturing settings. This robust cabinet features an all-stainless steel door, contrary to the glass door shown in some photos, and is **equipped with five full-depth shelves** to accommodate various items. Its dual blower motors, strategically placed at the top and bottom, ensure even air distribution, enhancing the drying process. The cabinet offers five preset options, including an air-only mode, and a continuous mode for extended use. Users can easily manage the drying process with a touch-sensitive electronic control panel that allows selection of temperature settings ranging from no heat to high heat, and run times adjustable in 15-minute increments, up to 10 hours. Measuring 23.47 inches in width, 24.21 inches in depth, and 68.71 inches in height, this USA-made drying cabinet provides approximately 10 inches between shelves within a 57-inch total interior height, ensuring ample space for drying medical equipment. Optional features such as a powder coat finish, HEPA filter, and caster base are available for added customization and functionality.

[Read More](#)

SKU: 820225SS



STABER MODEL 2230 (10 SHELF, STAINLESS STEEL) DRYING CABINET

The **Staber Model 2230 Drying Cabinet**, featuring a robust **stainless steel construction**, is an ideal solution for efficiently drying medical equipment and instruments. With a substantial interior capacity of 63 cubic feet, this cabinet **includes 10 large shelves**, each offering 8 square feet of loading space, collectively providing 80 square feet of total area. Designed for versatility, the unit is available in both stainless steel and powder-coated white finishes, although the stock photo may show the latter. The double-door design allows for easy access, facilitating quick loading and unloading of items. Each shelf can support up to 250 pounds, making it suitable for a wide range of equipment. Powered by a 6 kW electric heating system, the cabinet operates on a 208-240V connection and includes a HEPA filter for enhanced air quality. Measuring 80 inches in height, 55 inches in width, and 31 inches in depth, the cabinet also features a 6-inch exhaust diameter and a 460 cfm outlet airflow, ensuring efficient moisture removal. With a net weight of 460 pounds and a shipping weight of 630 pounds, the Staber Model 2230 is a reliable and high-capacity drying solution for medical facilities.

[Read More](#)

SKU: 820330SS-10



STABER MODEL 2230 (10 SHELF, POWDER COAT WHITE STEEL) DRYING CABINET

The **Staber Model 2230 Drying Cabinet** is a high-capacity, efficient solution for drying and removing moisture from medical equipment and instruments. This particular model features a robust construction with powder-coated white steel and offers a spacious interior of 63.0 cubic feet. It comes equipped with **10 large capacity shelves**, each providing 8 square feet of loading area, allowing for a total of 80 square feet of usable space. Capable of supporting up to 250 lbs per shelf, the cabinet ensures both flexibility and durability for various drying needs. Its double door design allows for wide swinging doors that facilitate quick and easy loading and unloading. For enhanced energy efficiency, the cabinet offers insulated double wall construction, and it operates with a 6 kW electric heating system. The cabinet requires a 208-240V, 60 Hz, single-phase electrical connection and includes a 40 amp breaker for safety. Additional features include a 6" exhaust diameter, an external floor drain, and an included HEPA filter. With net and shipping weights of 460 lbs and 630 lbs respectively, and dimensions of 31" in depth, 80" in height, and 55" in width, the Staber Model 2230 is a comprehensive drying solution for medical facilities striving for efficiency and capacity.

[Read More](#)

SKU: 820330-10

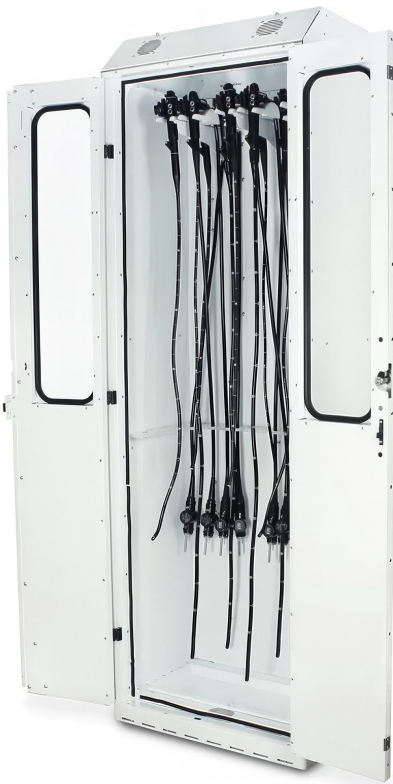


STABER MODEL 2230 (4 SHELF, POWDER COAT WHITE STEEL) DRYING CABINET

The **Staber Model 2230 Drying Cabinet** is an advanced solution for efficiently drying and removing moisture from medical equipment and instruments. Featuring a sleek, powder-coated white steel design, this double-door cabinet offers an impressive 63 cubic feet of interior space and comes equipped with **four large shelves**, each providing 8 square feet of loading area, for a total of 32 square feet. Each shelf can support up to 250 lbs, allowing for substantial storage capacity, and additional shelves can be added for increased flexibility. The wide-swinging doors facilitate easy loading and unloading, enhancing operational efficiency. For those prioritizing energy efficiency, an insulated double-wall construction option is available. The cabinet operates with a 6 kW electric heater and requires a 208-240V, 60 Hz, 1-phase connection with a 40 amp breaker. With dimensions of 31" depth, 80" height, and 55" width, the unit also features a 6" exhaust diameter and an external floor drain, all contributing to its robust functionality. Weighing 460 lbs net and 630 lbs when shipped, the cabinet includes a HEPA filter to ensure a sterile environment, making it an indispensable asset in medical facilities.

[Read More](#)

SKU: 820330-4



SUREDRIY PAINTED LOW CARBON STEEL 36" WIDE SCOPE DRYING CABINET, 14 SCOPES, TEMPERED GLASS DOUBLE DOORS, POSITIVE PRESSURE HEPA FILTER DRYING W/ DRI-SCOPE AID® PACKAGE

The **SureDry Painted Low Carbon Steel 36" Wide Scope Drying Cabinet** is an advanced solution for efficiently drying and storing up to **14 scopes**. Its robust design features tempered glass double doors with key locking for secure access. The cabinet employs a positive pressure HEPA filter drying system, equipped with three intake and two exhaust fans, ensuring optimal air circulation. The HEPA filter is highly effective, removing 99.7% of particulates as small as 0.3 microns. The drying process is further enhanced by the Dri-Scope Aid® package, which supplies HEPA-filtered air to all internal channels, facilitating an automated drying cycle for endoscopes. This cabinet's fan run time is adjustable and automatically activated each time the cabinet is closed, optimizing both convenience and efficiency. A medical-grade electrical system underpins its reliable performance. The cabinet is now available in an improved 24" deep design and comes in 20 color options, allowing customization to suit any facility's aesthetic. A representative will visit the

facility for set-up and training, ensuring seamless integration into your operations. Note that while all necessary tubing and HEPA filters are included, disposable scope attachments are sold separately.

[Read More](#)

SKU: SC8036DRDP-14-DSS3316



24"D X 42"W X 92"H, SCOPE CABINET, FLAT TOP, GLASS HINGED DOORS, STANDARD HANDLES, 22 SCOPE HANGERS

The **24"D x 42"W x 92"H Scope Cabinet** is a meticulously designed storage solution that combines functionality and elegance, ideal for medical and laboratory environments requiring secure and organized storage of scopes. This cabinet features a robust, fully welded construction, ensuring durability and longevity. The glass hinged doors, equipped with louvered vents, provide both visibility and ventilation, crucial for maintaining the equipment in optimal condition. **The cabinet is equipped to accommodate 22 scope hangers**, making it a versatile choice for facilities with extensive scope collections. A lower rack is thoughtfully included to keep scopes aligned and orderly, while a removable drain pan adds a layer of convenience for maintenance and cleaning. To prevent any potential damage, the cabinet's interior features a padded back wall. Standard handles offer ease of access, making this cabinet a practical and essential addition to any professional setting.

[Read More](#)

SKU: MSCA24224-301



24"D X 36"W X 92"H, SCOPE CABINET, FLAT TOP, GLASS HINGED DOORS, STANDARD HANDLES, 18 SCOPE HANGERS

The **24"D x 36"W x 92"H Scope Cabinet** is expertly designed to meet the specific needs of medical and laboratory environments. Its fully welded construction ensures durability and stability, making it a reliable choice for long-term use. The cabinet features glass hinged doors with louvered vents, providing visibility and ventilation for the stored contents. Inside, it **accommodates 18 scope hangers**, making it ideal for organizing and protecting delicate scopes. A lower rack is included to keep scopes aligned, while a removable drain pan ensures easy cleaning and maintenance. Additionally, the padded back wall prevents any damage to the scopes, offering an extra layer of protection. Standard handles make access convenient, completing the cabinet's practical and user-friendly design.

[Read More](#)

SKU: MSCA23624-301



24"D X 42"W X 92"H, SCOPE CABINET, FLAT TOP, GLASS HINGED DOORS, STANDARD HANDLES, 22 SCOPE HANGERS, POWER VENT

The **24"D X 42"W X 92"H Scope Cabinet** is a meticulously designed storage solution, perfect for safeguarding delicate scopes. Its fully welded construction ensures durability, while the glass hinged doors with louvered vents offer both visibility and essential airflow. This cabinet is **equipped with 22 scope hangers** and a lower rack, ensuring that all scopes remain perfectly aligned and secure. Additionally, the padded back wall prevents any potential damage during storage. The cabinet features a removable drain pan for easy maintenance and cleanliness. To enhance functionality, it includes a **power vent system with a ventilation fan, digital time switch, and HEPA filter**, ensuring optimal air quality. With a hospital-grade power cord and a 120V AC ventilation fan operating quietly at 44dB, this cabinet is both efficient and reliable, making it an ideal choice for medical and laboratory environments.

[Read More](#)

SKU: MSCA44224-301



18"D X 42"W X 92"H, SCOPE CABINET, FLAT TOP, GLASS HINGED DOORS, STANDARD HANDLES, 11 SCOPE HANGERS, POWER VENT

The **18"D X 42"W X 92"H Scope Cabinet** is a meticulously designed storage solution tailored for the safe and efficient housing of scopes. Featuring fully welded construction, this cabinet ensures durability and stability, making it a reliable choice for medical and laboratory environments. Its glass hinged doors, equipped with louvered vents, provide visibility while maintaining a controlled internal environment. The cabinet **accommodates 11 scope hangers**, with a lower rack to ensure scopes remain aligned and organized. A padded back wall offers added protection, preventing potential damage to delicate equipment. The inclusion of a removable drain pan facilitates easy cleaning and maintenance. Furthermore, the cabinet is equipped with a **power vent system, which includes a ventilation fan, digital time switch, and HEPA filter** to maintain optimal air quality and circulation. Powered by a hospital-grade 10a-125V power cord, the ventilation fan operates efficiently at 120V AC, ensuring quiet performance at 44dB while delivering an air flow of 105 cfm. This scope cabinet combines functionality with thoughtful design, making it an indispensable asset for any setting requiring the secure storage of sensitive instruments.

[Read More](#)

SKU: MSCA44218-301



18"D X 42"W X 92"H, SCOPE CABINET, FLAT TOP, GLASS HINGED DOORS, STANDARD HANDLES, 11 SCOPE HANGERS, POWER VENT

The **18"D X 42"W X 92"H Scope Cabinet** is a meticulously designed storage solution tailored for the safe and efficient housing of scopes. Featuring fully welded construction, this cabinet ensures durability and stability, making it a reliable choice for medical and laboratory environments. Its glass hinged doors, equipped with louvered vents, provide visibility while maintaining a controlled internal environment. The cabinet **accommodates 11 scope hangers**, with a lower rack to ensure scopes remain aligned and organized. A padded back wall offers added protection, preventing potential damage to delicate equipment. The inclusion of a removable drain pan facilitates easy cleaning and maintenance. Furthermore, the cabinet is equipped with a **power vent system, which includes a ventilation fan, digital time switch, and HEPA filter** to maintain optimal air quality and circulation. Powered by a hospital-grade 10a-125V power cord, the ventilation fan operates efficiently at 120V AC, ensuring quiet performance at 44dB while delivering an air flow of 105 cfm. This scope cabinet combines functionality with thoughtful design, making it an indispensable asset for any setting requiring the secure storage of sensitive instruments.

[Read More](#)

SKU: MSCA43618-301

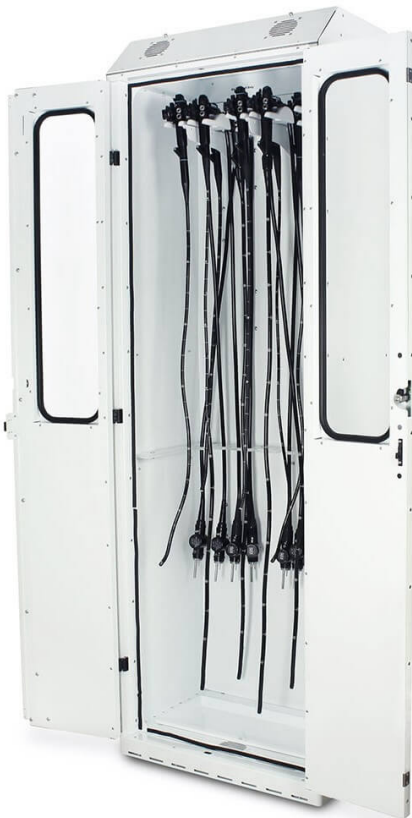


18"D X 42"W X 92"H, SCOPE CABINET, FLAT TOP, GLASS HINGED DOORS, STANDARD HANDLES, 11 SCOPE HANGERS

The **18"D X 42"W X 92"H Scope Cabinet** is a meticulously designed storage solution, ideal for securely housing delicate scopes. Featuring a robust, fully welded construction, this cabinet ensures long-lasting durability and stability. Its glass hinged doors, complete with louvered vents, provide optimal ventilation while allowing for easy visibility of the stored items. The cabinet is equipped with 11 scope hangers, offering ample space for organized storage, and includes a lower rack to maintain alignment, preventing potential tangles or damage. Additionally, the removable drain pan facilitates easy cleaning and maintenance, while the padded back wall adds an extra layer of protection, safeguarding the scopes from scratches or dents. The standard handles provide a reliable grip, making access smooth and efficient, thereby enhancing the cabinet's usability in any professional setting.

[Read More](#)

SKU: MSCA24218-301



HARLOFF SS2310 SCOPE DRYING CABINET (CAPACITY OF 8 SCOPES)

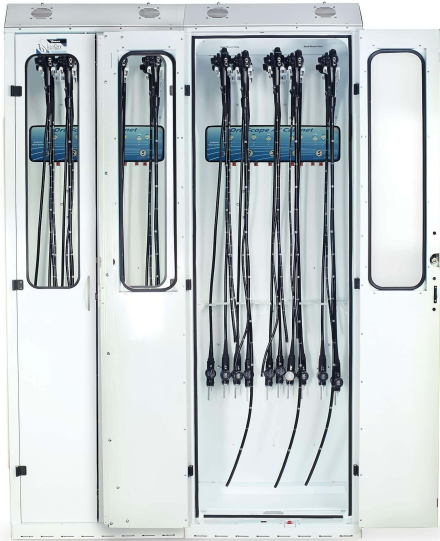
The **Harloff SS2310 Scope Drying Cabinet** is a state-of-the-art solution designed to meet the demanding needs of medical environments requiring efficient and reliable endoscope drying. With a capacity to hold up to eight scopes, this cabinet features a robust SureDry system made of painted low carbon steel, measuring 30 inches in width. The cabinet is equipped with tempered glass double doors and a key locking mechanism for added security. It employs a positive pressure HEPA filter drying system that includes two intake fans and one exhaust fan, ensuring optimal airflow. The fan run time is adjustable and is activated automatically each time the cabinet is closed, effectively removing 99.7% of particulates as small as 0.03 microns. The medical-grade electrical system enhances the unit's reliability and safety. Additionally, the Dri-Scope Aid® package supplies HEPA-filtered air to all internal channels of the endoscopes, utilizing an automated drying cycle to ensure thorough drying. The package includes all necessary tubing and a HEPA filter, with disposable scope attachments sold separately. The overall dimensions of the cabinet are 93 inches in height, 30 inches in width, and 24 inches in depth, and it is available in 20 different colors, allowing customization to suit any medical facility's aesthetic preferences.

**Harloff SS2310 Scope Drying Cabinet, Capacity of 8 Scopes,
SureDry Painted Low Carbon Steel 30" Wide Tempered Glass
Double Doors, Key Locking.**

[Read More](#)

SKU: SC8030DRDP-8-D SS2310





HARLOFF SUREDRIY PAINTED LOW CARBON 60" WIDE STEEL SCOPE DRYING CABINET, CAPACITY OF 10 SCOPES EACH CABINET TEMPERED GLASS DOUBLE DOORS, KEY LOCKING.

The **Harloff SureDry Painted Low Carbon 60" Wide Steel Scope Drying Cabinet** presents a state-of-the-art solution for healthcare facilities needing secure, efficient, and high-capacity storage for medical scopes. Accommodating up to 20 scopes, this cabinet is designed with user convenience and safety in mind, featuring tempered glass double doors with a key locking system to ensure security. Its advanced drying technology employs a positive pressure HEPA filter system, coupled with 4 intake and 2 exhaust fans, to remove 99.7% of particulates 0.03 microns and larger, thus offering an exceptionally clean environment for stored scopes. The fan run time is intelligently adjustable and activates every time the cabinet is closed, optimizing drying without the need for manual intervention. Furthermore, the cabinet's medical-grade electrical system and its new depth of 24 inches make it a perfect fit for medical facilities looking for a reliable, space-efficient, and effective scope storage solution.

[Read More](#)

SKU: SC8060DRDP

SCOPE CABINET - 18 SCOPE HANGERS WITH POWER VENT (24"D X 36"W X 92"H)

The Scope Cabinet, measuring 24"D x 36"W x 92"H with a flat top design, embodies the epitome of a fully welded, sturdy construction designed for medical settings. Its glass hinged doors are complemented by louvered vents, ensuring a blend of visibility, security, and proper ventilation. With the capacity to accommodate 18 scope hangers, this cabinet is designed for efficiency and organization, featuring a lower rack that keeps scopes perfectly aligned during storage. A removable drain pan and a padded back wall are thoughtful additions that enhance maintenance ease and prevent equipment damage, respectively. The cabinet is further equipped with advanced features such as a power vent system, which includes a ventilation fan, a digital time switch, and a HEPA filter to ensure a sterile environment. This scope cabinet is a testament to thoughtful design and functionality, making it an indispensable asset in medical facilities where the safe, sterile storage of scopes is paramount.

[Read More](#)

SKU: MSCA43624-301





HARLOFF SURE-DRY PAINTED 60 WIDE SCOPE DRYING AREA FOR UP TO 20 SCOPES

The **Harloff Sure-Dry** Painted 60" wide scope drying area is an advanced solution designed to ensure the safe and efficient drying of up to 20 scopes. This system is equipped with a convenient roll-up tambour door secured with a key lock, providing both ease of access and security. It boasts a state-of-the-art positive pressure HEPA filter drying system, incorporating 4 intake and 2 exhaust fans, to guarantee a thorough and sanitary drying process. The fan run time is adjustable and activates automatically each time the cabinet is closed, ensuring optimal drying conditions. The HEPA filter is highly effective, removing 99.7% of particulates 0.03 microns and larger, and the system is built with a medical-grade electrical setup, now featuring a 24" depth for enhanced capacity. The Harloff Sure-Dry also comes with a comprehensive 12-year manufacturer's warranty and a 1-year limited warranty, offering peace of mind and reliability. With the option to choose from 20 colors, facilities can customize their units to fit their aesthetic preferences. Orders are processed with efficiency in mind, promising shipment in less than 8 weeks, making the Harloff Sure-Dry an excellent investment for medical facilities looking to maintain their scopes in pristine condition.

[Read More](#)

SKU: SC8060TKDP



STABER POWDER COAT WHITE COUNTERTOP SOLID DOOR INSTRUMENT DRYING CABINET

THE TTDC-1000 TABLE-TOP DRYING CABINET, (TTDC) IS MANUFACTURED WITH QUALITY MATERIALS DESIGNED FOR EASE OF USE AND LONG-LASTING DURABILITY. THE OVERALL DESIGN OFFERS A VARIETY OF DRYING USES, ALL WITH A FOCUS ON THE DRYING OF A VARIETY OF MEDICAL EQUIPMENT.

THE TTDC ALSO OFFERS EASY ACCESS TO MAJOR COMPONENTS FOR REMOVAL AND INSTALLATION OF REPLACEMENT PARTS.

[Read More](#)

SKU: TTDC-1000



STABER STAINLESS STEEL FULL SIZE DOUBLE DOOR LARGE CAPACITY MEDICAL INSTRUMENT DRYING CABINET

THE STABER DRYING CABINET IS USED BY HOSPITALS, LABORATORIES, MANUFACTURERS, STERILE PROCESSING DEPARTMENTS (SPD) AND MANY OTHER APPLICATIONS TO DRY A WIDE VARIETY OF ITEMS. IDEAL FOR INSTRUMENT BASKET, INSTRUMENT TRAY, INSTRUMENT RACK AND INSTRUMENT PACKS.

[Read More](#)

SKU: IDCSS-2230



STABER STAINLESS STEEL FULL SIZE SINGLE DOOR MEDICAL INSTRUMENT DRYING CABINET

THE STABER MODEL SDC DRYING CABINET IS USED BY HOSPITALS, LABORATORIES, MANUFACTURERS, STERILE PROCESSING DEPARTMENTS (SPD) AND MANY OTHER APPLICATIONS TO DRY A WIDE VARIETY OF ITEMS. IDEAL FOR INSTRUMENT BASKET, INSTRUMENT TRAY, INSTRUMENT RACK AND INSTRUMENT PACKS.

The Drying Cabinet contains 5 preset options including air only. It features a heating element (located at the top) and dual blower motors which are located at the top and bottom of the cabinet for an even distribution of air flow. One of the many benefits of the Drying Cabinet is the versatility to dry medical instruments and many other items.

[Read More](#)

SKU: SDCSSG



HARLOFF SINGLE COLUMN MOBILE CABINET WITH KEY LOCKING DOORS WITH TEMPERED GLASS WITH 4 DIVIDER SHELVES

Unmatched quality of construction — built to last using professional grade design and manufacturing for medical-grade applications

[Read More](#)

SKU: MSPM81-00GK-MS-SH1-24



HARLOFF SURE-DRY STAINLESS STEEL 41" WIDE SCOPE DRYING AREA FOR UP TO 18 SCOPES (SCSS5430DRDP)

The new standard for endoscope drying and storage cabinets is here with the SCSS5430DRDP SureDry cabinet from Harloff. This endoscope cabinet is made with stainless steel, commonly used in the manufacturing of medical devices due to its rust/corrosion resistance, anti-bacterial properties and ease of cleaning and sterilization. This spacious stainless steel endoscope cabinet allows for easy hanging and retrieval of up to 8 scopes for all scope types. SureDry cabinets are positive pressure scope cabinets with 2 intake and 1 exhaust fans that combine to create a fully redundant circulation system that removes 99.7% of particulates thanks to the system's HEPA filter. Built with tempered glass double doors and a medical grade electrical system, this cabinet features multiple locking options and optional dimmable overhead LED lighting.

[Read More](#)

SKU: SCSS5430DRDP



HARLOFF SURE-DRY STAINLESS STEEL 41" WIDE SCOPE DRYING AREA FOR UP TO 18 SCOPES

The new standard for endoscope drying and storage cabinets is here with the SCSS8044DRDP SureDry cabinet from Harloff. This endoscope cabinet is made with stainless steel, commonly used in the manufacturing of medical devices due to its rust/corrosion resistance, anti-bacterial properties and ease of cleaning and sterilization. This spacious stainless steel endoscope cabinet allows for easy hanging and retrieval of up to 16 scopes for all scope types. SureDry cabinets are positive pressure scope cabinets with 3 intake and 2 exhaust fans that combine to create a fully redundant circulation system that removes 99.7% of particulates thanks to the system's HEPA filter. Built with tempered glass double doors and a medical grade electrical system, this cabinet features multiple locking options and optional dimmable overhead LED lighting.

[Read More](#)

SKU: SCSS8041DREDP-VAPR

INDEX

- 1**
18"D X 42"W X 92"H, Scope Cabinet, Flat Top, Glass hinged doors, Standard Handles, 11 Scope Hangers 18
18"D X 42"W X 92"H, Scope Cabinet, Flat Top, Glass hinged doors, Standard Handles, 11 Scope Hangers, Power Vent 17, 18
- 2**
24"D X 36"W X 92"H, Scope Cabinet, Flat Top, Glass hinged doors, Standard Handles, 18 Scope Hangers 16
24"D X 42"W X 92"H, Scope Cabinet, Flat Top, Glass hinged doors, Standard Handles, 22 Scope Hangers 15
24"D X 42"W X 92"H, Scope Cabinet, Flat Top, Glass hinged doors, Standard Handles, 22 Scope Hangers, Power Vent 16
- E**
ENT Scope Drying Cabinet, Wall Mount, Key Lock, 30" H x 24" W 4
- H**
Harloff Bronchoscope and ENT Small Scope Drying Cabinet, 10 Capacity, Key Lock (SC5430DRDP) 8
Harloff Bronchoscope Drying Cabinet, Wall Mount, Key Lock (SCW2448DRDP) 7
Harloff ENT Scope Storage Cabinet, Wall Mount, Key Lock (SCW2430DR) 9
Harloff Single Column Mobile Cabinet with Key Locking doors with tempered glass with 4 divider shelves 25
Harloff SS2310 Scope Drying Cabinet (Capacity of 8 Scopes) 19
Harloff Sure-Dry Painted 60 wide scope drying area for up to 20 scopes 22
Harloff Sure-Dry Stainless Steel 41" wide scope drying area for up to 18 scopes 27
Harloff Sure-Dry Stainless Steel 41" wide scope drying area for up to 18 scopes (SCSS5430DRDP) 26
Harloff SureDry Painted Low Carbon 60" Wide Steel Scope Drying Cabinet, Capacity of 10 Scopes each cabinet Tempered Glass Double Doors, Key Locking. 21
Harloff SureDry Painted Low Carbon Steel 24" Wide Scope Drying Cabinet, Capacity of 6 Scopes, Tempered Glass Double Doors, Key Locking. Positive Pressure HEPA Filter Drying System 3
- I**
Instrument Cabinet 18"D x 36"W x 68"H, Slope Top, w/ Casters 2
- O**
Olympic Model 44 Drying Cabinet 4
- S**
Scope Cabinet - 18 Scope Hangers with Power Vent (24"D X 36"W X 92"H) 21
Staber Model 2230 (10 Shelf, Powder Coat White Steel) Drying Cabinet 13
Staber Model 2230 (10 Shelf, Stainless Steel) Drying Cabinet 12
Staber Model 2230 (4 Shelf, Powder Coat White Steel) Drying Cabinet 14
Staber Model 2230 (4 Shelf, Stainless Steel) Drying Cabinet 6
Staber Powder Coat White Countertop Solid Door Instrument Drying Cabinet 23
Staber Powder Coated White Full Size Single Door Medical Equipment Drying Cabinet 5 Shelf 9
Staber Powder Coated White Full Size Single Glass Door Medical Equipment Drying Cabinet 5 Shelf 10
Staber Stainless Steel Full Size Double Door Large Capacity Medical Instrument Drying Cabinet 24

Staber Stainless Steel Full Size Single Door Medical Instrument Drying Cabinet 25

Staber Stainless Steel Full Size Single Stainless Door Medical Equipment Drying Cabinet 5 Shelf 11

SureDry Painted Low Carbon Steel 36" Wide Scope Drying Cabinet, 14 Scopes, Tempered Glass Double
Doors, Positive Pressure HEPA Filter Drying w/ Dri-Scope Aid® Package 14

SureDry Painted Low Carbon Steel 36" Wide Scope Drying Cabinet, Capacity to 14 Scopes, Tempered
Glass Double Doors, Key Locking 5