

TABLE OF CONTENTS

Stretchers	4
AM-SP-1061 Standard 4in Replacement Pads for Stryker 1061 Gynnie Stretcher (2 pc) 1061-426-200	4
Stretcher Pad, 30 x 76 x 4in	5
Standard Universal 26inx75inx4in Replacement Pad for HillRom P8000 / P8005	5
PAD, HILL-ROM 8005 STRETCHER	6
25"x75"x4" REPLACEMENT STRETCHER PAD (AM-SP-5052)	6
27"x75"x4" REPLACEMENT STRETCHER PAD (AM-SP-5051)	7
Hausted ESC2 Powered Ophthalmology Surgical Chair w Manual Base	7
Stryker Stretcher Model 735 without IV Pole	8
Champion T5 Chair Oxygen Holder X Series (TMA04X-15P)	9
Champion T5 Replacement Battery Pack, T-Series (TMA300-15)	9
Champion T5 External Tabletop Charger (TMA301-15)	11
MAC MEDICAL General Transport Stretcher PT1001	11
Champion T4 Procedure Chair Wide Base	12
Champion T4 Procedure Chair Low-Seat	12
Champion T4 Procedure Chair Standard	13
Champion T4 Procedure Chair with Seat Tilt	13
Stryker 6506 Power Pro XT Powered Cot	14
Champion T5 Procedure Chair Wide	15
Champion T5 Procedure Chair	15
Stryker Prime TC Transport Chair	16
MAC MEDICAL 5th Wheel Transport Stretcher	16
Stryker 747 Transport Stretcher	17
Stryker 1509 Advantage Stretcher	17
Stryker 1009 Advantage Stretcher	18
Styker 1731 Renaissance Stretcher	19
Styker 1231 Renaissance Stretcher	19
Stryker 1710 Renaissance Stretcher	20
Styker Renaissance 1210 Emergency 5th Wheel Stretcher	20
Styker 1211 Renaissance Stretcher	21
Stryker 1037 Trauma Stretcher	21
Stryker MX Pro 6080 Emergency Gurney	22

Stryker 1068 Eye Surgery Stretcher	22
Ferno 35A Ambulatory Stretcher MR Conditional Cot	23
Stryker 5050 stretcher chair w/ transfer board armrests	24
Stryker 1501 Renaissance Series stretcher with IV pole	24
GE Ohmeda Care Plus Incubator	25
Hill-Rom C2000 Infant Incubator	25
Ferno Powerflexx Ambulance Stretcher Cot	26
TransMotion Medical Anterior Wrist Rest	27
Hausted Horizon Series Hydraulic Stretcher 462-EMC	27
Pedigo 5400 W Stretcher, Side Brake Only	28
Transmotion TMM4 Multi-Purpose Stretcher-Chair Series	28
Transmotion TMM5PLUS Eye Procedure Chair XTB	29
Mac PT-1000 Transport Stretcher (Refurbished)	30
Hausted APC All Purpose Chair	30
Transmotion Medical TMM5 Eye Stretcher	31
Stryker 1069 Eye Stretcher	31
Stryker Stair-PRO Stair Chair	32
Stryker 1001 Advantage Stretcher	32
Stryker M Series Model 1015 Stretcher, with Big Wheel	33
Stryker 1125 Prime Zoom Drive Stretcher	33
Stryker 1115 Prime Big Wheel Stretcher	34
Stryker 5050 Stretcher Chair	34
Hausted 5E8-2 Power Eye stretcher 5E82EYEST	35
Hausted 5E8 Wide Power Eye stretcher 5E8EYXST	36
Hausted 578 Wide Eye Stretcher 578EYXST Hydraulic	36
Hausted 578 Eye Stretcher 578EYEST Hydraulic	36
Hausted 493 Fluoro Stretcher (New)	37
Hausted Video Imaging Chair VIC429ST	37
Hausted MBC Mammography/Biopsy Chair	38
Hausted ESC2 Powered Ophthalmology Surgical Chair	38
Hausted EPC500 Procedure Chair	39
Stryker 1105 Stretcher	40
Transmotion TMM5PLUS Eye Procedure Chair (AM-TMM5PLUS-TB)	40
Transmotion TMM5PLUS Eye Procedure Chair	41
Stryker 1079 Eye Stretcher w/ Pneumatic Fowler	41
Stryker 1089 Eye Stretcher	42
Pedigo 547 SLS Surgical Lounge Stretcher	42
Stryker 6500 Power Pro XT Powered Cot	43
Winco Stretchair	43
Midmark 500 Baby Crib	44

Hausted SurgiChair ESC-EYE (Eye Surgery Chair)	44
Gendron MRI 1000 Gurney	45
Ferno 35A Ambulatory Stretcher	46
Gendron 1190-231 Bariatric Stretcher	46
Hausted 5E8 Power Eye stretcher	47
Hausted All Purpose Chair Hydraulic	47
Hill-Rom P8005 Transport Stretcher	48
Hill-Rom TranStar P8040	49
Stryker 721 Transport Stretcher	49
Ferno Model 30 NM MRI Conditional Cot	49
Mac PT-1000 Transport Stretcher	50
Hausted Video Imaging Chair	50
Hill-Rom Transtar 8010 Eye Stretcher	51
Stryker Renaissance 1061 Gynnie OB/GYN Stretcher	52
Stryker 735 Transport Stretcher with IV Pole	52
Hausted 578 Eye Stretcher	52
Stryker 1080 Fluoroscopy Stretcher	53
Stryker M Series (1005/1007) Stretcher	53
Stryker SM304 (1025) Zoom Drive Stretcher	54
Hill-Rom P8000 Trauma/Procedure 700lb Stretcher	55
Hausted Horizon Hydraulic Series	56
Hill-Rom P8000 Stretcher	56
Hill-Rom P8050 OB-GYN Stretcher	56
Hausted 493 Fluoro Stertcher	57



STRETCHERS

Auxo Medical supplies durable new and refurbished stretchers for a variety of patient applications and specialties. We carry leading brands of medical stretchers, such as [Stryker](#), [Hill-Rom](#), [Transmotion](#), [Gendron](#) and more.

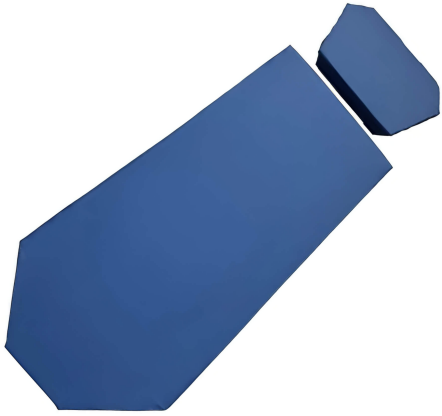
Whether you're looking for stretcher for transport, emergency, PACU, eye surgery, MRI/Non-Magnetic, or stretchers with high weight capacities (bariatric), display scales, powered features, X-Ray accessibility, hand and foot brakes, height adjustability, comfortable mattresses, or easy maneuverability, our inventory can suit your every need. Auxo Medical provides both new and refurbished stretchers with a focus on both function and patient comfort. Available in multiple color options, our medical stretchers will fit whatever needs your medical facility or hospital has.

Our catalog consists of brand new, reconditioned and refurbished equipment. Would you like to filter the equipment by:

[BRAND NEW](#)

[RECONDITIONED](#)

[REFURBISHED](#)



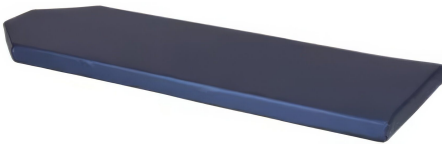
AM-SP-1061 STANDARD 4IN REPLACEMENT PADS FOR STRYKER 1061 GYNNIE STRETCHER (2 PC) 1061-426-200

The **AM-SP-1061 Standard 4-inch Replacement Pads** are designed specifically for the Stryker 1061 Gynnie Stretcher (model number 1061-426-200). This set includes two durable, supportive pads that seamlessly replace the original cushioning, ensuring continued comfort and pressure distribution during patient procedures. Crafted for compatibility and long-lasting use, these replacement pads are essential for maintaining optimal hygiene, safety, and patient support in gynecological and surgical settings. Color may be different than the image. To confirm color please email sales@auxomedical.com

[Read More](#)

SKU: AM-SP-1061

Price: \$453.84



STRETCHER PAD, 30 X 76 X 4IN

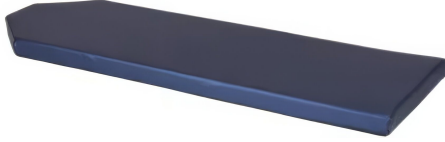
The **30 x 76 x 4-inch Stretcher Pad with Angled Head End** is a versatile and durable cushioning solution designed for hospital and ambulance stretchers. Featuring a supportive 4-inch thick foam construction, this pad enhances patient comfort and pressure relief during transport and treatment. Its angled head end provides ergonomic support for head and neck positioning. This pad is an essential accessory for ensuring optimal patient care and safety during transportation.

Color may be different than pictured. If needing to confirm color available please email sales@auxomedical.com

[Read More](#)

SKU: AM-SP-5062

Price: \$292.82



STANDARD UNIVERSAL 26INX75INX4IN REPLACEMENT PAD FOR HILLROM P8000 / P8005

The **Standard Universal 26" x 75" x 4" Replacement Pad** is designed as an exact fit for Hill-Rom P8000 and P8005 stretchers. Crafted to match the dimensions and contours of the original padding, this replacement pad provides reliable comfort, pressure distribution, and support for a wide range of patient care settings. Its durable construction ensures long-term performance, making it an essential component for maintaining optimal hygiene, safety, and patient comfort in healthcare environments. Color may be different than pictured. If needing to confirm color available please email sales@auxomedical.com

[Read More](#)

SKU: AM-SP-5203

Price: \$408.80



PAD, HILL-ROM 8005 STRETCHER

The **Hill-Rom 8005 Stretcher Pad** is a high-quality, 4-inch thick cushion designed to enhance patient comfort and pressure sore prevention on Hill-Rom stretchers models 8000 and 8005. Featuring a core of 3 inches of convoluted foam topped with a 1-inch soft layer, it provides effective pressure distribution and patient support. The top cover is constructed from two-way stretch stretcher vinyl, offering durability and ease of cleaning. Its innovative no-slip bottom fabric eliminates the need for hook and loop fasteners, reducing infection control concerns by securely anchoring the pad even when the stretcher is in a sitting position. Welded corners prevent fluid seepage, and the pad's resistant properties ensure long-lasting performance against bacteria, stains, and tears, while meeting the strict requirements of CTB 117.

[Read More](#)

SKU: AM-P1430ECS3

Price: \$438.50



25"X75"X4" REPLACEMENT STRETCHER PAD (AM-SP-5052)

The **25" x 75" x 4" Replacement Stretcher Pad (AM-SP-5052)** features a durable design with universal corners, providing a comfortable and secure surface for patient transport and positioning. Equipped with loop Velcro down the center bottom (unless otherwise specified), this pad ensures a snug fit on compatible stretchers, facilitating quick attachment and removal. Its generous size and reliable construction make it an ideal replacement part for various medical and emergency stretcher applications, enhancing patient safety and comfort during transfers.

[Read More](#)

SKU: AM-SP-5052

Price: \$249.95



27"X75"X4" REPLACEMENT STRETCHER PAD (AM-SP-5051)

The **27" x 75" x 4" Replacement Stretcher Pad with Universal Corners** is designed to provide a comfortable, secure surface for patient transport and positioning. Featuring loop Velcro down the center bottom (unless otherwise specified), this durable and washable pad ensures a snug fit on various stretchers, enhancing patient comfort and safety during transfers. Its generous size and universal corners make it an ideal replacement part for compatible stretchers, offering reliable support and easy attachment for a wide range of medical and emergency applications.

[Read More](#)

SKU: AM-SP-5051

Price: \$260.59



HAUSTED ESC2 POWERED OPHTHALMOLOGY SURGICAL CHAIR W MANUAL BASE

The **Hausted ESC2 Powered Ophthalmology Surgical Chair with Manual Base** is a versatile, advanced patient seating solution designed to optimize safety, comfort, and efficiency in ophthalmology and outpatient surgical settings. Equipped with Smart Caster Technology featuring auto-braking and advanced steering, it ensures improved stability and maneuverability for both patients and staff. Its industry-leading height adjustable range—20 to 40 inches—provides maximum procedure flexibility, supporting patients of up to 600 lbs (272 kg), the highest capacity on the U.S. market, with a comfortable 26-inch wide surface. The chair offers dual-position footrests with integrated powered leg extensions for taller patients, ergonomic push handles, quick-release positioning, and a contoured, multi-density pad with Dura-Gel® for superior patient comfort. Features such as a full 0°-15° seat tilt, integrated ergonomic handles, counter-rotating side rails, and a backup lithium-ion battery enhance safety and operational reliability. Designed to streamline workflow and reduce staff injury and transfer times, this chair improves patient outcomes and satisfaction across ASCs, outpatient hospitals, and physician offices.

[Read More](#)

SKU: AM-ESC2EYEST-MB



STRYKER STRETCHER MODEL 735 WITHOUT IV POLE

The **Stryker Model 735 Stretcher, without IV pole**, offers a versatile and reliable patient transport solution equipped with a new mattress and a host of convenient features. Its 26-inch wide patient surface, combined with a dual cylinder pneumatic backrest and dual pedestal hydraulics, ensures patient comfort and easy adjustability. The stretcher is mounted on smooth-rolling Omni Surface casters with 8-inch wheels, complemented by a four-wheel steel-ring brake system with dual end activators for secure positioning. Additional features include fold-down siderails that fold to the head, four IV receptacles, an integrated storage tray with oxygen bottle holder, retractable fifth-wheel steering, roller bumpers, a stationary foot-end litter, and hands-free Trendelenburg positioning. With overall dimensions of 83 inches in length, 30 inches in width, and a weight capacity of 500 lbs, this durable stretcher is ideal for efficient patient transfers in hospitals, clinics, and emergency settings.

[Read More](#)

SKU: N/A



Champion T5 Chair Oxygen Holder X Series (TMA04X-15P)

CHAMPION T5 CHAIR OXYGEN HOLDER X SERIES (TMA04X-15P)

The **Champion T5 Chair Oxygen Holder X Series (TMA04X-15P)** is an accessory designed for the Champion T5 chair family, compatible with models AM-T5XB and AM-T5XWB. It provides a secure, easily accessible mounting point for portable oxygen within reach during patient care. Built to integrate with the T5 chair's X-Series accessory line, this oxygen holder supports reliable, quick-access oxygen delivery in clinical settings while maintaining a compact, neat footprint on the chair or nearby surfaces.

[Read More](#)

SKU: TMA04X-15P

CHAMPION T5 REPLACEMENT BATTERY PACK, T-SERIES (TMA300-15)

The **Champion T5 Replacement Battery Pack, T-Series (TMA300-15)** is designed for the Champion T5 chair family, specifically compatible with models AM-T5XB and AM-T5XWB. This replacement pack provides reliable, extended battery life to keep the T5 chair ready for mobile use and patient care. Built to match the T-Series power specifications, it supports seamless hot-swapping or routine replacements, helping maintain uninterrupted operation in clinical environments.

[Read More](#)

SKU: TMA300-15





Champion T5 External Tabletop Charger (TMA301-15)

CHAMPION T5 EXTERNAL TABLETOP CHARGER (TMA301-15)

The **Champion T5 External Tabletop Charger (TMA301-15)** is an external tabletop charger designed for the Champion T5 chair family. Specifically compatible with models AM-T5XB and AM-T5XWB, this charger provides a convenient, dedicated power solution for charging the chair's components from a compact, desktop footprint. It supports seamless integration with Champion T5 accessories, helping to keep the chair ready for use with reliable charging performance in clinical or facility settings.

[Read More](#)

SKU: TMA301-15



MAC MEDICAL GENERAL TRANSPORT STRETCHER PT1001

The **MAC Medical General Transport Stretcher PT1001** is a cost-effective and versatile patient transport solution designed to meet the needs of busy healthcare environments. Built to support patients weighing up to 750 lbs., this stretcher provides a durable, stable platform for safe and comfortable patient transfers across various departments. Its generous 29-inch wide bed and overall dimensions of approximately 83 1/4 inches long by 33 9/16 inches wide ensure ample space for patient comfort. The PT1001 features adjustable height from 22 to 35 inches, allowing caregivers to position the bed at optimal heights for ease of transfer and treatment. It includes a dual Fowler lift backrest with 90° adjustability, Trendelenburg and reverse Trendelenburg capabilities up to $\pm 18^\circ$, and a dual pedestal lift mechanism for smooth operation. Equipped with 8-inch Tente casters—comprising one directional and three swiveling—effortless steering, pivoting, and cornering are achieved for easy maneuverability. Additional features include fold-forward side rails with built-in push handles, a 4-inch comfort mattress, a removable telescopic IV pole with six sockets, large underneath storage, and a full perimeter bumper to protect walls and fixtures. This reliable, ergonomic stretcher is ideal for transporting patients safely and efficiently in hospital, emergency, and outpatient settings.

[Read More](#)

SKU: AM-PT1001

CHAMPION T4 PROCEDURE CHAIR WIDE BASE

The **Champion T4 Wide Base Procedure Chair** prioritizes patient comfort and efficient workflow, embodying the "One Patient, One Surface®" design. This chair features a radiolucent back for easy imaging, push-button pendant controls, a central locking brake for safety, swing-and-tuck siderails, and an electrostatic discharge caster for smooth movement. With a 500 lb weight capacity, it offers superior stability and ample space, accommodating a wider range of patient sizes and body types. The wider seat (28") and overall width (35") enhance patient comfort and provide improved access for caregivers. The adjustable seat height (23.5"-43.5"), backrest articulation (0-90°), and overall dimensions (35"W x 56"-76"H x 77"L) provide versatile positioning options. On-board charging and a removable lithium-ion battery further enhance convenience. A comprehensive warranty—seven-year/lifetime for frames/welds and two-year for components—ensures durability. A selection of accessories, including head pillows, lap belts, and IV poles, are available to customize the chair's functionality.

[Read More](#)

SKU: AM-T4-WB

CHAMPION T4 PROCEDURE CHAIR LOW-SEAT

The **Champion T4 Low-Seat Procedure Chair** adheres to the "One Patient, One Surface®" principle, ensuring patient comfort and efficient workflow. This chair features a radiolucent back, push-button pendant control, central locking brake, swing-and-tuck siderails, and an electrostatic discharge caster for smooth mobility. Designed to accommodate patients up to 500 lbs, it provides precise positioning for surgical procedures while maintaining easy access for caregivers and streamlined transport. The low-seat design, with a seat height range of 22"-42", and overall dimensions of 31"W x 54.5"-74.5"H x 77"L, optimizes accessibility for various patient populations and healthcare settings. On-board charging and a removable lithium-ion battery enhance usability. A comprehensive warranty—seven-year/lifetime for frames/welds and two-year for components—guarantees longevity. A range of accessories, including head pillows, lap belts, and IV poles, are available for customized functionality.

[Read More](#)

SKU: AM-T4-LB





CHAMPION T4 PROCEDURE CHAIR STANDARD

The **Champion T4 Procedure Chair** embodies the "One Patient, One Surface®" concept, prioritizing patient comfort, safety, and efficiency. Key features include a radiolucent back, push-button pendant control, central locking brake, swing-and-tuck siderails, and an electrostatic discharge caster. This chair supports patients weighing up to 500 lbs and offers a wide range of positioning adjustments, facilitating precise surgical positioning and easy caregiver access. The chair's dimensions (31"W x 56"-76"H x 77"L) and adjustable seat height (3.75"-43.5") provide versatility. On-board charging and a removable lithium-ion battery enhance convenience. A robust warranty—seven-year/lifetime for frames/welds and two-year for components—underscores its durability. Optional accessories, including head pillows, lap belts, IV poles, and arm boards, further enhance its functionality.

[Read More](#)

SKU: AM-T4-B



CHAMPION T4 PROCEDURE CHAIR WITH SEAT TILT

The **Champion T4 Procedure Chair with Seat Tilt** exemplifies the "One Patient, One Surface®" approach, streamlining patient care from arrival to departure. Its key features include a radiolucent back for easy imaging, a push-button pendant for convenient adjustments, a central locking brake for safety, swing-and-tuck siderails, and an electrostatic discharge caster for smooth maneuverability. With a 500 lb weight capacity, the T4 offers precise positioning for surgeons, easy access for caregivers, and efficient transport for medical staff. The chair's adjustable seat height (3.75"-43.5"), backrest articulation (0-90°), and overall dimensions (31"W x 56"-76"H x 77"L) ensure versatility. On-board charging and a removable lithium-ion battery enhance convenience. A seven-year/lifetime warranty on frames and welds and a two-year warranty on components demonstrate Champion's commitment to quality. Numerous accessories, including a head pillow, lap belt, IV pole, and arm board, are available to further customize the chair.

[Read More](#)

SKU: AM-T4XB



STRYKER 6506 POWER PRO XT POWERED COT

The **Stryker 6506 Power Pro XT Powered Cot** is a high-capacity (700 lbs/318 kg) ambulance cot featuring a battery-powered hydraulic system for effortless raising and lowering of patients via a simple button control. A manual backup system ensures functionality even during power loss, while the easily accessible foot-end battery simplifies replacement. The retractable head section maximizes versatility by allowing for a shorter cot length at any height. This refurbished cot includes a new mattress, two new batteries and charger, new safety straps, and a collapsible storage cath bag. The cot's specifications include a backrest articulation of 0-73° (+15° shock position), an overall length of 81" (63" minimum), a width of 23", and adjustable height from 14" to 41.5". The refurbishment process included new internal leg bearings, electric motor, power switches, backrest shock, wheels, and hoses. The cot is compatible with various Stryker and Ferno fastening systems and has a recommended loading height of up to 36".

[Read More](#)

SKU: AM-SMXPXT-6506



CHAMPION T5 PROCEDURE CHAIR WIDE

The **Champion T5 Procedure Chair Wide** is a versatile and robust chair designed to accommodate patients up to 500 lbs. It includes a dual articulating headrest, fold-down push bars, and a push-button pendant for easy adjustments. Safety features include a central-locking brake, swing & tuck side rails, a manual quick-release back, and an electrostatic discharge steering caster. The chair's stability is ensured by its triple column base and surgical support leg. It also features on-board charging with a removable lithium-ion battery for continuous use. Key dimensions include a 33" x 20" wheelbase, adjustable seat height from 3.75" to 43.5", and a 24" wide seat. The overall width is 34" with rails up and 30" with rails down. Available accessories include an anterior wrist rest, head extension, IV pole, and more. The chair comes with a seven-year/lifetime warranty on frames/welds and a two-year warranty on components.

[Read More](#)

SKU: AM-T5XWB



CHAMPION T5 PROCEDURE CHAIR

The **Champion T5 Procedure Chair** is designed for versatility and patient comfort, supporting up to 500 lbs. It features a dual articulating headrest, fold-down push bars, and a push-button pendant for easy adjustments. Safety and convenience are enhanced with a central-locking brake, swing & tuck side rails, a manual quick-release back, and an electrostatic discharge steering caster. The chair's triple column base and surgical support leg provide stability, while the on-board charging and removable lithium-ion battery ensure continuous operation. Dimensions include a 33" x 20" wheelbase, adjustable seat height (3.75" - 43.5"), and a 24" wide seat. Additional accessories like an anterior wrist rest, IV pole, and oxygen tank holder are available. The chair comes with a seven-year/lifetime warranty on frames/welds and a two-year warranty on components.

[Read More](#)

SKU: AM-T5XB





STRYKER PRIME TC TRANSPORT CHAIR

The **Stryker Prime TC Transport Chair, model 1460**, is designed for efficient patient transport with a focus on safety and maneuverability. Standard features include stand-assist armrests, flip-up footrests with swing-away functionality, BackSmart Push Handles, a one-touch central brake, and anti-tip wheels. The chair also incorporates a chart holder, a molded plastic seamless design for easy cleaning, and a rigid powder-coated steel frame. The nesting design allows for compact storage, and yellow activation points enhance visibility. With Big Wheel maneuverability and non-removable parts, the chair is built for durability and ease of use. It measures 40.2" in overall length, 28.3" in overall width, and has a seat width of 21.5". The seat height is 15" from the footrest and 21" from the floor, and the chair height is 45" without the IV pole (73" with). The push handle grip range is 16"-20.5" in width and 35"-45" in height from the floor, with a weight capacity of 500 lbs.

*****This item is currently out of stock. We apologize for the inconvenience.*****

[Read More](#)

SKU: AM-S1460



MAC MEDICAL 5TH WHEEL TRANSPORT STRETCHER

The **MAC MEDICAL PT1001 5th Wheel Transport Stretcher** is an economical and versatile solution designed for comfortable and efficient patient transfer, supporting a weight capacity of up to 750 lbs. It features a 29" wide bed and overall dimensions of 83 5/16" L x 33 9/16" W, with a patient surface of 75 7/16" L x 29 1/8" W. The stretcher's height is adjustable from 22" to 35" (bottom of mattress) and includes effortless steering with 8" Tente casters, six brake/steer pedals, and a dual pedestal lift mechanism. It offers Trendelenburg and reverse Trendelenburg positioning (+/- 18°), a dual Fowler assisted lift backrest adjustable to 90°, and fold-forward side rails with built-in push handles. Additional features include a 4" comfort mattress, a removable telescopic IV pole with six sockets, a large storage area, a full perimeter bumper, ergonomically located oxygen tank holder and four restraint belt locations.

[Read More](#)

SKU: AM-PTF1000



STRYKER 747 TRANSPORT STRETCHER

The **Stryker 747 Transport Stretcher** is expertly designed for optimal patient safety and comfort during transport. Featuring 8-inch (20 cm) Omni Surface casters, it ensures smooth maneuverability across various surfaces. The stretcher includes fold-down siderails on a 26-inch (66 cm) litter, providing easy access while maintaining safety. Equipped with four IV receptacles and an integrated storage tray that holds an oxygen bottle, it supports efficient medical care. The central-locking brake system with dual-end activators enhances stability during transit, while retractable fifth-wheel steering and roller bumpers improve handling and protection. The stationary foot-end litter, dual cylinder pneumatic backrest, and dual pedestal hydraulics allow for precise positioning, complemented by dual side-mounted foot control hydraulics for easy height adjustments. With hands-free Trendelenburg capabilities, the stretcher adapts to various medical needs. It accommodates a weight capacity of 500 lb (227 kg) and features a height range from 21.5 inches (55 cm) to 36 inches (91 cm). The litter positioning options include a backrest angle of 0° to 90° and Trendelenburg/reverse Trendelenburg capabilities of ±18°. The Stryker 747 is a reliable choice for emergency medical services, combining functionality and safety.

[Read More](#)

SKU: AM-S747



STRYKER 1509 ADVANTAGE STRETCHER

The **Stryker 1509 Advantage Stretcher** is meticulously designed to provide exceptional comfort and functionality for patient transport. Featuring a 3" (8 cm) mattress atop a generous 29" (73 cm) wide patient surface, it ensures a supportive and restful experience. The stretcher is equipped with 8" (20 cm) Omni Surface™ casters for effortless maneuverability, while dual pedestal hydraulics and side-mounted foot control hydraulics allow for precise height adjustments. Its durable fibersin backrest and steel foot-end litter provide reliable support, complemented by fold-down siderails for added safety and accessibility. With four IV receptacles and an integrated storage tray that includes an oxygen bottle holder, this stretcher is optimized for efficiency in critical situations. Safety features include robust four-wheel steel-ring brakes with dual end activators and locking caster steering to maintain stability during transport. Designed to accommodate a weight capacity of 500 lb (228 kg) and a height range from 22" (56 cm) to 35.5" (90 cm), the Stryker 1509 offers versatile litter positioning options with a backrest angle of 0° to 90° and a knee gatch of 0° to 30°, alongside Trendelenburg and reverse Trendelenburg capabilities of ±18°. Enhanced with rubber bumpers and a unilower pedal for easy operation, the Stryker 1509 is the ideal choice for modern emergency medical services.

[Read More](#)

SKU: AM-S1509



STRYKER 1009 ADVANTAGE STRETCHER

The **Stryker 1009 Advantage Stretcher** combines comfort and functionality, featuring a luxurious 3" (8 cm) mattress and a generous 26" (66 cm) wide patient surface designed for optimal care. Its 8" (20 cm) Omni Surface™ casters ensure smooth mobility, while dual pedestal hydraulics and side-mounted foot control hydraulics allow for effortless height adjustments. The sturdy fibersin backrest and steel foot-end litter provide durability and support, complemented by fold-down siderails for easy access. With four IV receptacles and a built-in storage tray equipped with an oxygen bottle holder, this stretcher is geared for efficiency. Safety features include robust four-wheel steel-ring brakes with dual end activators and locking caster steering, ensuring secure positioning during transport. Accommodating a weight capacity of 500 lb (228 kg) and a height range from 22" (56 cm) to 35.5" (90 cm), the Stryker 1009 also offers versatile litter positioning with a backrest angle of 0° to 90° and knee gatch of 0° to 30°, along with Trendelenburg and reverse Trendelenburg capabilities of ±18°. Thoughtfully designed with rubber bumpers and a unilower pedal, this stretcher exemplifies the perfect blend of safety, comfort, and practicality for emergency medical services.

[Read More](#)

SKU: AM-S1009



STYKER 1731 RENAISSANCE STRETCHER

The **Stryker 1731 Renaissance Stretcher** provides a robust and versatile platform for patient transport, emphasizing both comfort and adaptability. The stretcher features a 3-inch enhanced comfort mattress, a dual cylinder pneumatic backrest, and offers a 29-inch patient surface width. A key feature of the 1731 is its removable siderails, which allow for a reduced width of 30.5 inches, facilitating navigation through narrow spaces and improved access during procedures. The dual pedestal hydraulic system, controlled by a unilower pedal and three-sided foot control, allows for smooth height adjustments and Trendelenburg positioning. Integrated patient transfer boards, a retractable fifth-wheel steering mechanism, and four-wheel brakes enhance maneuverability and ease of use for caregivers. Additional features such as four corner IV receptacles and an integrated storage tray with an oxygen bottle holder further contribute to the 1731's practicality in various healthcare settings. With a 500 lb weight capacity and an 84-inch overall length, the 1731 is well-suited for a wide range of patient transport needs.

[Read More](#)

SKU: AM-S1731



STYKER 1231 RENAISSANCE STRETCHER

The **Stryker 1231 Renaissance Stretcher** combines patient comfort and maneuverability with a focus on adaptability for various healthcare environments. Featuring a 3-inch enhanced comfort mattress, dual cylinder pneumatic backrest, and a choice of 26-inch patient surface width, the 1231 prioritizes patient well-being during transport. The removable siderails offer a significant advantage, allowing for a reduced width of 30 inches, making the stretcher ideal for navigating confined spaces such as elevators and crowded hallways. This feature also facilitates easier access to the patient during procedures like imaging scans or specialized surgeries. The 1231 incorporates features like retractable fifth-wheel steering, four-wheel brakes with dual-end activators, integrated patient transfer boards, and a convenient storage tray with an oxygen bottle holder. With a 500 lb weight capacity and an overall length of 84 inches, the 1231 is a versatile solution for routine patient transfers, emergency transport, and specialized care situations.

[Read More](#)

SKU: AM-S1231



STRYKER 1710 RENAISSANCE STRETCHER

The **Stryker 1710 Renaissance Stretcher** offers a blend of patient comfort and practical functionality for various healthcare transport needs. Equipped with a 3-inch enhanced comfort mattress, a 29-inch patient surface, and a dual cylinder pneumatic backrest, the 1710 prioritizes patient well-being during transport. Its dual pedestal hydraulic system, controlled by a unilower pedal and three-sided foot control, allows for smooth and precise adjustments, including Trendelenburg and reverse Trendelenburg positioning. The fold-down siderails contribute to both patient safety and efficient storage. Integrated features like the retractable fifth-wheel steering, four-wheel brakes, and integrated patient transfer boards enhance maneuverability and ease of use. The 1710 also includes convenient features such as four corner IV receptacles and an integrated storage tray with an oxygen bottle holder. With a robust 500 lb weight capacity and an overall length of 84 inches, the 1710 is suitable for a wide range of patient transport scenarios.

[Read More](#)

SKU: AM-S1710



STRYKER RENAISSANCE 1210 EMERGENCY 5TH WHEEL STRETCHER

The **Stryker Renaissance 1210** is a robust emergency stretcher designed for efficient and safe patient transport. Featuring an enhanced comfort 3-inch mattress and a 26-inch wide patient surface, the stretcher prioritizes patient comfort. Dual cylinder pneumatic backrest and dual pedestal hydraulics, controlled by a unilower pedal and three-sided foot control, allow for smooth and precise positioning. The stretcher offers a wide range of adjustments, including a 0° - 90° backrest, 0° - 30° knee gatch, and $\pm 18^\circ$ Trendelenburg/reverse Trendelenburg. Integrated features such as retractable fifth-wheel steering, fold-down siderails, four corner IV receptacles, and an integrated storage tray with an oxygen bottle holder enhance functionality. Built for durability and maneuverability, the Renaissance 1210 includes 8-inch Omni Surface™ casters with wheel covers, four-wheel steel-ring brakes with dual-end activators, and pop-up push handles. The stretcher has a weight capacity of 500 lbs and an overall length of 84 inches.

[Read More](#)

SKU: AM-S1210



STRYKER 1211 RENAISSANCE STRETCHER

The **Stryker 1211 Renaissance Stretcher** is a highly versatile patient transport solution designed for diverse healthcare settings. Its key features, including a 3-inch comfort mattress, dual cylinder pneumatic backrest, and retractable fifth-wheel steering, ensure patient comfort and ease of maneuverability. The removable siderails distinguish the 1211, allowing for a reduced width of 30 inches, ideal for navigating tight spaces like elevators and crowded emergency rooms. This feature also proves beneficial during procedures requiring close access to the patient, such as imaging scans or specialized surgeries. Further enhancing its utility are integrated patient transfer boards, a storage tray with an oxygen bottle holder, and four-wheel brakes with dual-end activators. The 1211 finds use in various scenarios, from routine patient transfers within hospitals and clinics to emergency transport and specialized care situations where accessibility and adaptability are paramount. Its 500 lb weight capacity and robust construction ensure safe and reliable performance under demanding conditions.

[Read More](#)

SKU: AM-S1211



STRYKER 1037 TRAUMA STRETCHER

The **Stryker 1037 Trauma Stretcher** is a state-of-the-art medical platform designed to enhance the care and management of critically injured and immobile patients. Its innovative design features full-length X-ray capability, allowing medical personnel to perform necessary imaging without the need to transfer or reposition the patient, thus minimizing further risk of injury. This stretcher is equipped with a 3-inch mattress for patient comfort and 8-inch Omni Surface casters for smooth mobility, alongside dual cylinder pneumatic and Fibersin backrests for optimal patient positioning. The dual pedestal hydraulics and side hydraulic controls offer ease of use and adaptability in various medical scenarios. Safety and convenience are further ensured with features like fold-down siderails, central-locking brakes, and retractable fifth-wheel steering. The stretcher also includes an integrated storage tray with an oxygen bottle holder, dual mounted collection device hooks, and four IV receptacles, making it a comprehensive solution for trauma care. With a weight

capacity of 500 pounds and adjustable heights ranging from 24.5 to 37.5 inches, the Stryker 1037 is versatile enough to meet diverse patient needs, while its Trendelenburg and Fowler angle adjustments support a wide range of clinical requirements. The inclusion of a full-length X-ray cassette tray and rubber bumpers further enhances its functionality and durability, making it a reliable choice for healthcare providers.

[Read More](#)

SKU: AM-S1037



STRYKER MX PRO 6080 EMERGENCY GURNEY

Stryker MX Pro 6080 Emergency Gurney

Includes new mattress & Safety Straps

The MX-PRO is light, durable, and fast-handling. This manual cot features a 600 lb weight capacity. You get a lightweight cot that's strong, durable, and easy to handle. One-hand operation of backrest, side rail, breakaway head section and safety bar frees the user to perform life saving tasks. Foot-end lift and grip design and duplicate foot-end controls provide ergonomics that accommodate different-sized operators.

[Read More](#)

SKU: AM-SMXP-6080



STRYKER 1068 EYE SURGERY STRETCHER

The **Stryker 1068 Eye Surgery Stretcher** is expertly refurbished, offering a combination of functionality and comfort with its new pad. Designed for versatility in medical settings, it features a height range of 22" to 35.5" and is equipped with 8" casters for smooth mobility. The stretcher supports a Fowler position from 0° to 90°, and includes a knee gatch adjustment from 0° to 30°, ensuring optimal positioning for various procedures. The headpiece height can be adjusted by +/-3° with a tilt of +/-45°, providing tailored support for patient needs. With a patient surface width of 26" and a weight capacity of 500 lbs, it offers ample space and strength. Additionally, the stretcher's overall dimensions are 31.5" in width and 90" in length, with side rails measuring 13" x 55", emphasizing its robust design and safety features essential for eye surgery settings.

[Read More](#)

SKU: AM-S1068



FERNO 35A AMBULATORY STRETCHER MR CONDITIONAL COT

The **Ferno 35-A Ambulatory Stretcher MR Conditional Cot** is a lightweight yet robust solution for emergency medical services, renowned for its dependable performance over the past two decades. Weighing only 74 lbs, this X-Frame Ambulance Cot is engineered for ease of use and versatility, featuring a fold-down drop frame, foot end lead handle, and easy-pull and side release handles. Its lubrication-free design and easy-roll wheels make maneuverability a breeze, while the cot's ability to adjust to eight different bed positions and two loading heights ensures optimal patient comfort and care. Constructed from durable tubular aluminum, it supports a load limit of up to 500 lbs and boasts a user-friendly gas-assist backrest that adjusts from 0 to 75 degrees. The Ferno 35-A is also MR Conditional, suitable for use in environments with a static magnetic field of 3-Tesla or less and a spatial gradient magnetic field of 720-Gauss/cm or less, though it is not meant for placement inside the bore of an MR scanner. Its design prioritizes safety with features like the Safety U bar and hook, and one-hand swing down sidearms, making it a trusted choice for EMS services worldwide.

[Read More](#)

SKU: N/A



STRYKER 5050 STRETCHER CHAIR W/ TRANSFER BOARD ARMRESTS

The **Stryker 5050 Stretcher Chair** is designed for exceptional versatility and patient comfort, making it ideal for surgery centers and small spaces. Its ability to transition seamlessly from a horizontal to a chair position enhances clinical performance and maximizes patient throughput. The stretcher chair features a 2" new vinyl mattress atop a 24" wide patient surface, supported by durable 6" casters. Its dual cylinder pneumatic backrest and dual pedestal hydraulics allow for smooth adjustments, while the adjustable height footrest ensures tailored comfort. The fixed position pushbar and four-wheel, steel-ring brakes with dual side activators provide stability and easy maneuverability. Additional features include four IV receptacles, hands-free Trendelenburg positioning, and transfer board swing down siderails. The thermoformed ABS hood with integrated storage tray and oxygen bottle holder adds practicality. With a height range from 22" to 33.5", and a patient surface measuring 24"x74", the Stryker 5050 is engineered for efficiency and flexibility, ensuring optimal patient care in a compact design.

[Read More](#)

SKU: AM-S5050-TB



STRYKER 1501 RENAISSANCE SERIES STRETCHER WITH IV POLE

The fully refurbished **Stryker 1501 Renaissance Series Stretcher with IV pole** is a versatile and reliable solution for patient transport and care in medical settings. This stretcher boasts a range of features designed to enhance both patient comfort and caregiver convenience. It includes a new 3-inch (8 cm) Enhanced Comfort Mattress, ensuring a restful experience for patients. The stretcher is equipped with 8-inch (20 cm) Omni Surface™ casters, making it easy to maneuver across various floor types. With a 29-inch (74 cm) wide patient surface and a 76-inch long patient surface, it provides ample space for patients of different sizes. The overall length of the stretcher is 83 inches, accommodating the needs of most medical environments. Its dual cylinder pneumatic backrest and dual pedestal hydraulics allow for smooth and precise adjustments, while the unilower pedal simplifies the lowering process. The durable construction includes a Fibersin backrest and a steel foot-end litter, complemented by fold-down side rails for added safety. The inclusion of an IV pole and adjustable knee gatch further enhances its functionality. With a patient capacity of up to 500 lbs, this stretcher is a robust and dependable choice for healthcare facilities.

[Read More](#)

SKU: AM-S1501



GE OHMEDA CARE PLUS INCUBATOR

The **GE Ohmeda Care Plus® Incubator** exemplifies advanced neonatal care technology, featuring a microprocessor-based controller and optional active double wall construction for superior thermoregulation. This state-of-the-art incubator is designed to create a precise and consistent environment crucial for the well-being of neonates, while also addressing the practical clinical needs of healthcare providers by ensuring easy access to the infant. The incubator is available in two configurations: one with an elevating base and another with a stationary pedestal. The elevating base model ranges in height from 54 to 62 inches and provides a mattress-to-floor elevation of 35 to 43 inches, with a depth of 28 inches and width of 33 inches, weighing 195 lbs. The stationary pedestal model stands at a height of 53 inches but shares the same depth and width dimensions, weighing slightly less at 180 lbs. Both configurations can be equipped with drawer packages, including options for a single deep drawer or dual drawers, ensuring that essential items are always within reach. This combination of features ensures that the GE Ohmeda Care Plus® Incubator meets the highest standards of neonatal care and operational efficiency.

[Read More](#)

SKU: AM-OHMEDA-CP



HILL-ROM C2000 INFANT INCUBATOR

The **Hill-rom C2000 Infant Incubator** is a state-of-the-art device designed to support neonatal development with advanced thermoregulation technology. Utilizing Dräger's PID algorithm, it ensures a stable environment by precisely controlling temperature and humidity levels. The servo-controlled humidifier optimizes comfort and minimizes transepidermal water loss, which is crucial in the early days of a newborn's life. The double-wall design enhances heat conservation, providing a warm and secure space for the infant. Ergonomically designed for ease of use, the C2000 features quiet hand ports and large, hinged sidewalls that allow easy access for daily care and medical procedures. The controls and sensor modules are conveniently located for easy replacement and servicing. With its compact design and small footprint, the Isolette C2000 fits seamlessly into any NICU layout, offering placement flexibility and maximizing available space for other equipment, caregivers, and parents. The recessed cabinet design allows caregivers and families to sit closely and comfortably next to the baby. The incubator maintains very low air velocity over the mattress, creating a calm zone to reduce convective heat loss, while dual air curtains and preemptive regulation mechanisms ensure stable conditions even during access. The C2000's specifications, including dimensions and temperature control modes, are meticulously engineered to create an optimal environment for neonatal care.

[Read More](#)

SKU: AM-HR-C2000



FERNO POWERFLEX AMBULANCE STRETCHER COT

The **Ferno POWERFlex powered ambulance stretcher cot** is an innovative solution designed to enhance the efficiency and safety of patient transport in emergency medical services. With a substantial lift capacity of 700 lbs (318 kg), this cot can effortlessly raise and lower heavy loads at the touch of a button, eliminating the need for operator assistance and reducing the risk of injury to medical personnel. Measuring up to 83 inches (211 cm) in length when fully extended and 61 inches (155 cm) when retracted, the POWERFlex cot offers versatile adjustability to accommodate patients of various sizes. The cot itself weighs 133 lbs (60 kg), while the shipping weight is 230 lbs (105 kg), ensuring robust construction and durability. Its width of 24 inches (61 cm) and maximum loading height of 34 inches (86 cm) provide ample space and convenience during patient handling. The package includes essential accessories such as a mattress, IV pole, new battery, and charger, making it a comprehensive and ready-to-use solution for any emergency medical

team.

[Read More](#)

SKU: AM-F-POWERFLEXX



TRANSMOTION MEDICAL ANTERIOR WRIST REST

The **TransMotion Medical Anterior Wrist Rest** is a thoughtfully engineered accessory designed to enhance the functionality of TMM5 series stretcher-chairs. Featuring a robust one-piece horseshoe design, this wrist rest securely mounts to the articulating headpiece of any TMM5 series stretcher-chair, ensuring stability and safety during use. Its low-height adjustment capabilities and integrated tilt feature provide customizable support, catering to a wide range of patient needs and clinician preferences. With an adjustable height range from a minimum of 1.3 inches (3.3 cm) to a maximum of 3.7 inches (9.4 cm), the anterior wrist rest offers versatile positioning options, making it an essential addition to medical settings that prioritize patient comfort and ergonomic efficiency.

[Read More](#)

SKU: TMA167-15



HAUSTED HORIZON SERIES HYDRAULIC STRETCHER 462-EMC

The **Hausted 462 Series Retracto™ Rail Horizon Hydraulic Stretcher** is meticulously engineered to deliver dependable performance and ease of use in hospital and surgical settings. This versatile stretcher is designed for seamless patient handling, supporting the entire journey from preinduction to transport and recovery, thereby optimizing case turnaround times. Equipped with easy-to-operate hydraulic foot pedals on both sides, the stretcher allows for effortless height and Trendelenburg adjustments. The intermediate side rail position ensures maximum patient access while prioritizing safety for both patients and staff. The stretcher is outfitted with dual accessory wells at all four corners, a full perimeter heavy-duty non-marring bumper system, a seamless thermoformed base cover with storage, and a built-in oxygen tank holder. With a patient surface dimension of 25 x 76 inches and a maximum weight capacity of 500 lbs, the stretcher offers robust and adaptable patient support. Additional features include pneumatic-assist Fowler adjustments from 0 to

90 degrees, 8-inch Tente casters, and brake/steer pedals at each corner, ensuring maneuverability and stability. The overall dimensions and advanced features make the HAUSTED 462 Series Retracto™ Rail Horizon Hydraulic Stretcher an essential asset for any medical facility.

[Read More](#)

SKU: AM-H462-EMC-ST



PEDIGO 5400 W STRETCHER, SIDE BRAKE ONLY

The **Pedigo 5400 W Stretcher** with a side brake system exemplifies a perfect blend of functionality and cost-efficiency, making it an ideal choice for various medical settings including the Emergency Department (ED), Operating Room (OR), and Post-Anesthesia Care Unit (PACU). This stretcher is equipped with robust, full-length side rails that feature a single release for quick accessibility, and a center column support that utilizes a single hydraulic lift cylinder and precision ball bearings for smooth and effortless height adjustments. The integration of dual side-mounted hydraulic foot pedals enhances user control over the stretcher's positioning, while the pneumatic assist Fowler backrest aids in safely adjusting patient posture. Notably, the stretcher includes a unique True Direction Steering (TDS) system that improves maneuverability and directional stability. Additionally, the stretcher is designed with patient comfort and safety in mind, offering multiple IV pole receptacles, restraint strap positions, and high impact composite corner bumpers. With a robust weight capacity of 500 lbs and large, easy mobility casters, the Pedigo 5400 W Stretcher ensures reliable and secure patient transport within healthcare facilities.

[Read More](#)

SKU: AM-P5400W



TRANSMOTION TMM4 MULTI-PURPOSE STRETCHER-CHAIR SERIES

The **Transmotion TMM4 Multi-Purpose Stretcher-Chair Series** represents a significant advancement in medical mobility, blending safety, convenience, and functionality into one versatile piece of equipment. Designed to accommodate a wide array of medical environments, the TMM4 facilitates smooth transitions for patients by converting from a chair to a stretcher with the simple push of a button. This feature allows patients to remain on a single surface from admission through to discharge, significantly minimizing the need for transfers that can pose risks to both patient and staff safety. Key attributes such as the pendant-controlled powered adjustments for legs, back, and height not only enhance patient comfort but also eliminate the hazards associated with manual positioning methods. The TMM4's robust design supports up to 500 lbs (227 kg), incorporates high-quality memory foam cushions, and features a large radiolucent section for imaging. Additional practical features include an auto-extending footrest, swing-and-tuck side rails, and dual quick-change batteries, ensuring that the stretcher-chair remains operational and efficient, all while maintaining a compact footprint suitable for busy medical settings.

PAD SET IS COLOR: BLACK

[Read More](#)

SKU: AM-TMM4-R



TRANSMOTION TMM5PLUS EYE PROCEDURE CHAIR XTB

The versatility of TransMotion's TMM5 PLUS Surgical Stretcher-Chair enables facilities to streamline the treatment process and surgical flow by replacing multiple pieces of equipment with a single device. Innovative, powered patient positioning helps eliminate patient transfers, limiting the risk of injury to patients and staff while improving throughput. The TMM5 PLUS is a procedure chair, transport device and stretcher all in one!

[Read More](#)

SKU: AM-TMM5PLUS-XTB



MAC PT-1000 TRANSPORT STRETCHER (REFURBISHED)

The MAC PT-1000 general transport stretcher allows for easy and comfortable patient transfer with a weight capacity of up to 550 lbs. Economical and versatile, this stretcher is an ideal solution for any department or facility where cost efficient quality is required.

[Download Brochure](#)
[Read More](#)

SKU: AM-PT1000-R



HAUSTED APC ALL PURPOSE CHAIR

The **Hausted APC All Purpose Chair** represents the epitome of versatility and efficiency in medical equipment, specifically designed to accommodate a broad spectrum of procedures ranging from emergency triage to outpatient surgeries. This all-purpose procedure chair transforms seamlessly from a traditional chair setup into a fully functional stretcher, facilitating easy transitions during treatment, transport, and recovery phases. Its compact and easy-to-clean thermoformed base, coupled with a space-saving design, enhances mobility within medical facilities. The chair is equipped with a four-wheel brake and steer system featuring 5-inch Easy Roll casters, ensuring smooth maneuverability across different surfaces. The APC chair supports a wide range of patient positions with adjustable backrest and knee flex settings, as well as Trendelenburg capabilities, providing optimal comfort and accessibility during various medical procedures. With a robust weight capacity, inclusive accessories like an IV pole, O2 tank holder, and safety straps, the Hausted APC All Purpose Chair is an indispensable tool for modern healthcare settings, ensuring both patient safety and comfort.



[Download the Brochure](#)

[Read More](#)

SKU: AM-MBC000ST



TRANSMOTION MEDICAL TMM5 EYE STRETCHER

The **Transmotion Medical TMM5 Eye Stretcher** is a state-of-the-art medical equipment designed for optimal patient care and comfort. This specialized stretcher is primarily used in ophthalmology departments, facilitating the safe transport and positioning of patients during eye surgeries and procedures. It is equipped with advanced features such as power height, back, leg, and tilt adjustments for exceptional patient positioning and accessibility. The TMM5 eye stretcher also ensures the utmost safety with its side rails and adjustable straps. Its ergonomic, mobile design allows for seamless transfer from preoperative areas to operating rooms, enhancing efficiency in medical facilities. The Transmotion Medical TMM5 Eye Stretcher is a significant stride in medical technology, revolutionizing patient care in ophthalmological contexts.

[Read More](#)

SKU: AM-TMM5



STRYKER 1069 EYE STRETCHER

The **Stryker 1069 Eye Stretcher** is an advanced piece of medical equipment designed specifically for eye surgery and procedures. It is renowned for its outstanding patient comfort and safety. This stretcher comes with a versatile design that allows for easy adjustability and maneuverability during delicate eye procedures. The Stryker 1069 Eye Stretcher is equipped with a dual articulating headpiece, which provides optimal access for surgeons. Furthermore, this stretcher is built to accommodate the latest ophthalmic surgical microscopes and lasers. Its enhanced features, such as the hydraulic height adjustment and the ergonomic push handles, make it an indispensable tool in the ophthalmic world. The Stryker 1069 Eye Stretcher is a testament to Stryker's commitment to innovation and patient care.

[Read More](#)

SKU: AM-S1069



STRYKER STAIR-PRO STAIR CHAIR

The revolutionary **Stryker Stair-PRO** provides breakthrough stairway mobility previously unavailable in any stair chair. Stryker's patented Stair-TREAD system enables operators to move patients up or down stairs without lifting, significantly reducing the risk of operator back injury. Lightweight and easy to use, Stair-PRO's advanced design delivers rugged reliability and superior ergonomics.

[Read More](#)

SKU: AM-S6252



STRYKER 1001 ADVANTAGE STRETCHER

The **Stryker 1001 Advantage Stretcher** is engineered for optimal patient care and comfort, featuring a plush 3" (8 cm) mattress and a spacious 26" (66 cm) wide patient surface. Designed with the user in mind, it boasts 8" (20 cm) Omni Surface™ casters for exceptional maneuverability, alongside dual pedestal hydraulics and side-mounted foot controls for easy height adjustments. Safety and convenience are paramount, with glideaway, removable siderails, four IV receptacles, and an integrated storage tray complete with an oxygen bottle holder. The stretcher is equipped with robust four-wheel steel-ring brakes and dual end activators for secure positioning. With a weight capacity of 500 lb (228 kg) and an adjustable height range from 22" (56 cm) to 35.5" (90 cm), it accommodates diverse patient needs. The litter positioning features allow for a flexible backrest angle of 0° to 90°, and a knee gatch of 0° to 30°, along with Trendelenburg and reverse Trendelenburg capabilities of ±18°. With thoughtful design elements like rubber bumpers and a unilower pedal for effortless operation, the Stryker 1001 Advantage Stretcher exemplifies the perfect blend of functionality and safety in emergency medical transport.

[Read More](#)

SKU: AM-S1001



STRYKER M SERIES MODEL 1015 STRETCHER, WITH BIG WHEEL

The **Stryker M-Series SM 204 (1015) with Big Wheel** is a highly adaptable and fully-equipped stretcher that offers a range of mobility solutions to meet individual needs. Designed to prioritize both patient care and clinician comfort, these stretchers are incredibly mobile and user-friendly. With their big wheel feature, they are able to reduce physical strain on clinicians without compromising on the comfort and care provided to the patient.

The stretcher has a variety of additional features, including an overall length of 84 inches and an overall width of 33.5 inches (with siderails up) or 37 inches (with siderails down). The patient surface is 26 inches by 74.25 inches, and the side rails measure 14 inches by 57.75 inches. Additionally, the stretcher has a maximum weight capacity of 700 lbs and includes a 4-inch mattress and an IV pole. Perfect for healthcare settings, the Stryker M-Series SM 204 (1015) with Big Wheel offers a reliable and adaptable solution for safe and comfortable patient transportation.

[Read More](#)

SKU: AM-SM204B



STRYKER 1125 PRIME ZOOM DRIVE STRETCHER

The Stryker Prime series stretchers are the latest generation of stretchers made by Stryker, replacing the popular M-series stretchers. They are commonly used in hospitals and surgery centers. The Prime series is designed to ensure caregiver safety and efficiency, while also improving the patient experience. It offers three mobility options, unprecedented patient comfort, and various support services and configuration options. With a weight capacity of 700 lbs., it can accommodate heavy patients and long transports. **The Prime 1125 includes a Zoom Motorized Drive System to assist in easy patient transportation.**

[Read More](#)

SKU: AM-S1125



STRYKER 1115 PRIME BIG WHEEL STRETCHER

The **Stryker Prime Big Wheel Stretcher (S1115)** is a versatile and feature-rich solution designed to improve patient care. It has a weight capacity of 700 lbs and a thermoformed ABS base. The stretcher includes a storage tray, a wide patient surface, and a 3-inch Enhanced Comfort Mattress. It has a low height for easy patient transfer and accessibility. The stretcher also has an integrated utility tray, a litter-mounted oxygen bottle holder, and an integrated transfer board for smooth patient transfers. It is power-washable for easy cleaning and maintenance. It has a four-wheel, center-locking brake system, dual side-mounted foot control hydraulics, and Glideaway™ Siderails for patient security. It includes 4 integrated IV receptacles and a +/- Trendelenburg feature for versatile positioning. It has 8-inch Omni Surface™ Casters for smooth maneuverability and a pneumatic backrest/stationary foot mechanism for adjustable patient positioning. The stretcher has constant descent hydraulics and dual end brake/steer controls for smooth navigation. It is designed for use in hospitals, clinics, and other healthcare environments. It has an adjustable backrest and a 4-inch mattress for superior patient comfort. Overall, the Stryker Prime Big Wheel Stretcher offers exceptional quality and versatility in patient care.

[Read More](#)

SKU: AM-S1115



STRYKER 5050 STRETCHER CHAIR

The Stryker 5050 Stretcher Chair offers multiple position options for superior versatility. The chair's easy positioning from horizontal to chair position helps achieve superior clinical performance and patient comfort. Ideal for surgery centers and small spaces, the 5050 maximizes patient throughput.

[Download Brochure](#)

[Read More](#)

SKU: AM-S5050



HAUSTED 5E8-2 POWER EYE STRETCHER 5E82EYEST

The **Hausted 5E8-2 Power Eye Stretcher 5E82EYEST** is a versatile and innovative medical device designed to enhance patient care during treatment, transport, or recovery. This stretcher is particularly suited for specialty procedures requiring precise head positioning, such as ophthalmology, plastic surgery, and ENT procedures, thanks to its uniquely designed articulating head section. The dual operating knobs allow for infinite adjustability, providing precise microscopic movement of the head section. The power handheld controls facilitate effortless adjustments for height, Trendelenburg/reverse Trendelenburg, backrest, knee flex, and auto contouring, complemented by a nurse control panel at the foot-end for ease of use. In emergencies, the backrest release lever provides a quick override of electric or battery operations. The stretcher operates on a power supply of 100V - 240V and features a battery backup for continued functionality when unplugged. With a maximum weight capacity of 800 lbs and dimensions designed for optimal patient comfort, the 5E8 is a reliable choice for medical professionals. Its programmable memory functions, built-in push handles, and electric caster operations further underline its practicality and efficiency in medical settings.

[Read More](#)

SKU: AM-5E82EYEST



HAUSTED 5E8 WIDE POWER EYE STRETCHER 5E8EYXST

The 5E8 is a multi-position stretcher intended for treatment, transport, or recovery of a patient. With the uniquely designed articulating head section, this unit can be used for specialty procedures which require precision head positioning, such as ophthalmology, plastic surgery, or ENT procedures.

[Download the Brochure](#)

[Read More](#)

SKU: AM-5E8EYXST



HAUSTED 578 WIDE EYE STRETCHER 578EYXST HYDRAULIC

The Hausted Horizon 578 Eye Surgery Stretcher is a multi-position stretcher intended for treatment, transport, or recovery of a patient. With the uniquely designed articulating head section, this unit can be used for specialty procedures which require precision head positioning, such as ophthalmology, plastic surgery, or ENT procedures.

[Download the Brochure](#)

[Read More](#)

SKU: AM-578EYXST



HAUSTED 578 EYE STRETCHER 578EYEST HYDRAULIC

The Hausted Horizon 578 Eye Surgery Stretcher is a multi-position stretcher intended for treatment, transport, or recovery of a patient. With the uniquely designed articulating head section, this unit can be used for specialty procedures which require precision head positioning, such as ophthalmology, plastic surgery, or ENT procedures.

[Download the Brochure](#)

[Read More](#)

SKU: AM-578EYEST



HAUSTED 493 FLUORO STRETCHER (NEW)

The Fluoro-Track™ stretcher is specifically crafted for fluoroscopy-guided procedures that utilize C - Arms. Its distinctive design includes a sliding top exclusive to this product, allowing for a broader range of imaging capabilities without the need to reposition the patient. Additionally, the hourglass-shaped trim base of the stretcher easily accommodates a wide variety of C - Arms, providing the reassurance of a specialized imaging table with the convenient mobility of a stretcher.

[Download the Brochure](#)

[Read More](#)

SKU: AM-493RPCST



HAUSTED VIDEO IMAGING CHAIR VIC429ST

The Video Imaging Chair is designed for Modified Barium Swallow Studies, AP/Lateral Imaging, and a Procedural Chair for diagnosis and treatment. The shortened base is easy to maneuver in smaller rooms.

- 325 lb (147 kg) Weight Capacity*
- Removable radiolucent back section for radiological procedures
- Easy-to-operate 90° rotating seat saves time in repositioning patient for anterior-posterior and lateral imaging
- Four Wheel Brake and Steer System
- Swing-down, self-storing side rails with padded armrests help keep patient secure during procedure and transport
- Dual-density foam sectional pad with Fluid Resistant, 4-way Stretch Urethane Cover enhances comfort

[Download the Brochure](#)

[Read More](#)

SKU: AM-VIC429ST



HAUSTED MBC MAMMOGRAPHY/BIOPSY CHAIR

The Hausted Mammography/Biopsy Chair is designed with a shortened base for positioning in small rooms with large imaging equipment. The backrest adjusts to a fully upright position of 90° to supine to provide for maneuvering between the X-ray machine and wall for a stable work surface during mammography/biopsy procedures. This chair has dual side controls for height adjustment and Trendelenburg positioning. Emergency Release Lever enables caregivers to immediately respond to hemodynamic instability. Swing down, self-storing side rails with padded armrests keep patient secure during procedure and transport. Dual-density foam sectional pad design with Fluid Resistant 4-way Stretch Urethane Cover enhances comfort and protection.

[Download the Brochure](#)

[Read More](#)

SKU: AM-MBC000ST



HAUSTED ESC2 POWERED OPHTHALMOLOGY SURGICAL CHAIR

Ideal for:

ASC's - Eye, ENT, Plastic
Hospital Outpatient Services
Physician's Offices

[Download the Brochure](#)

[Read More](#)

SKU: AM-ESC2EYEST



HAUSTED EPC500 PROCEDURE CHAIR

The **Hausted EPC500 Procedure Chair** is a versatile and robust piece of medical equipment, specifically engineered to meet the diverse demands of healthcare settings such as outpatient surgery, emergency rooms, and dialysis centers. This chair boasts a range of high-end features aimed at enhancing patient and staff safety and comfort. With its Smart Caster Technology, the chair ensures precise maneuverability and stability through auto-braking and advanced steering systems. It offers an industry-leading height adjustment range from 20 inches to 40 inches, accommodating various procedural requirements and patient sizes, supporting up to 600 lbs, the highest weight capacity currently available in the U.S. market. The full radiolucent back allows for multiple imaging procedures without the need to reposition the patient, thereby reducing handling and potential discomfort. Additional features such as a wider patient surface, integrated powered leg extensions, and multi-positional hand pendant controls enable customized patient positioning for optimal comfort and procedural efficiency. The chair's design also prioritizes ergonomic support for healthcare staff with features like ergonomic push handles and superior surgeon leg clearance. Economic benefits include increased productivity and reduced turnover times, while patient safety is enhanced by minimizing transfers and allowing patient-controlled positioning. Overall, the Hausted EPC500 Procedure Chair represents a significant advancement in medical equipment, combining functionality with patient and provider safety to facilitate a smoother, more efficient care experience.

Ideal for:

Outpatient Surgery

ER

Dialysis (Insertion of Vascular Access Ports)

[Download the Brochure](#)

[Read More](#)

SKU: AM-EPC500ST



STRYKER 1105 STRETCHER

The **Stryker 1105 Stretcher** boasts a number of impressive features, including a durable and lightweight construction that allows for easy maneuverability. Equipped with advanced ergonomic handles and a smooth-rolling fifth wheel, healthcare professionals can effortlessly transport patients without causing any discomfort or strain. The Stryker 1105 Stretcher also offers a fully adjustable backrest, ensuring patients can find their most comfortable position. Furthermore, it includes a collapsible side rail system to provide additional security. With its innovative design and focus on patient well-being, the Stryker 1105 Stretcher is a trusted and reliable choice for medical facilities worldwide.

[Read More](#)

SKU: AM-S1105



TRANSMOTION TMM5PLUS EYE PROCEDURE CHAIR (AM-TMM5PLUS-TB)

The versatility of TransMotion's TMM5 PLUS Surgical Stretcher-Chair enables facilities to streamline the treatment process and surgical flow by replacing multiple pieces of equipment with a single device. Innovative, powered patient positioning helps eliminate patient transfers, limiting the risk of injury to patients and staff while improving throughput. The TMM5 PLUS is a procedure chair, transport device and stretcher all in one!

[Read More](#)

SKU: AM-TMM5PLUS-TB



TRANSMOTION TMM5PLUS EYE PROCEDURE CHAIR

The versatility of TransMotion's TMM5 PLUS Surgical Stretcher-Chair enables facilities to streamline the treatment process and surgical flow by replacing multiple pieces of equipment with a single device. Innovative, powered patient positioning helps eliminate patient transfers, limiting the risk of injury to patients and staff while improving throughput. The TMM5 PLUS is a procedure chair, transport device and stretcher all in one!

[Read More](#)

SKU: AM-TMM5PLUS-XWB

STRYKER 1079 EYE STRETCHER W/ PNEUMATIC FOWLER



- OVERALL LENGTH: 90in
- OVERALL WIDTH (SIDERAILS UP): 31.5in
- WEIGHT CAPACITY: 500 LBS
- HEIGHT RANGE: 36in HIGH TO 23.25 in LOW

[Read More](#)

SKU: AM-S1079-P

STRYKER 1089 EYE STRETCHER



Stryker 1089 Eye Stretcher

[Read More](#)

SKU: AM-S1089



PEDIGO 547 SLS SURGICAL LOUNGE STRETCHER

The Pedigo 547 SLS is a full function surgical stretcher that allows for lounge positioning of the patient. It is the perfect stretcher for the support and transport of patients before, during, and after ophthalmic surgery procedures. Several unique features also make the versatile 547 ideal for ENT, plastic surgery, dermatology, emergency medicine, and general surgical procedures.

[Read More](#)

SKU: AM-P547-SLS



STRYKER 6500 POWER PRO XT POWERED COT

The **Stryker 6500 Power Pro XT Powered Cot** is an innovative battery-powered hydraulic system that raises and lowers the patient with the touch of a button. Easy to use manual back-up system provides complete cot operation in the event of power loss. Foot end-mounted Stryker battery is accessible and easily changed in any situation. Retractable head section allows cot to be shortened in any height position for maximum versatility.

[Read More](#)

SKU: AM-SMXPXT-6500



WINCO STRETCHAIR

The Stretchair S750 is the solution to safer patient transfer; this chair encourages a no-lift culture in most healthcare environments. This versatile chair can go from upright to infinite recline to lateral transfer positioning by using the attached hand-control pendant. Individually adjustable armrests and legrests/footrests give more comfort for the patient.

[Download Brochure](#)

[Read More](#)

SKU: AM-WIN-S999



MIDMARK 500 BABY CRIB

Midmark 500 pediatric stretcher/crib, with its unique oval design, rolls easily on 5 oversized locking casters. It features a manual Fowler, optional storage tray and pad. One handed operation lowers and raises side rails with side Rail Intermediate Stop Position.

[Download Brochure](#)

[Read More](#)

SKU: AM-MIDMARK500

HAUSTED SURGICHAIR ESC-EYE (EYE SURGERY CHAIR)

The Hausted SurgiChair ESC-EYE is a multi-position chair and stretcher intended for treatment, transport, or recovery of a patient. With the uniquely designed articulating head section, this unit can be used for specialty procedures that require precision head positioning. Models in this series provide specialized surgical functions of head positioning for ophthalmology, plastic surgery, or ENT procedures.

[Download Brochure](#)
[Read More](#)

SKU: AM-HAUSTED-ESC



GENDRON MRI 1000 GURNEY

The Gendron 1000MR Bariatric MRI Transport Stretcher is an essential piece of equipment for hospitals and medical centers, specifically designed for safe and efficient patient transport within the MRI suite. Constructed from non-magnetic materials, this stretcher ensures safety by preventing any magnetic interference, although it should not be used directly inside the MR system. Key features of the 1000MR include side rails that conveniently swing down for easy patient access, a telescopic IV holder for versatile medical needs, and a manual fowler backrest with a comfortable mattress to enhance patient comfort during transfers. With a robust weight capacity of 350 lbs, it is particularly suitable for bariatric care, facilitating seamless movement of patients between departments. The Gendron 1000MR is backed by a one-year parts warranty, ensuring reliability and peace of mind for healthcare providers.

[Download Brochure](#)
[Read More](#)

SKU: AM-G1000MR-124





FERNO 35A AMBULATORY STRETCHER

The 35-A Mobile Transporter X-Frame Ambulance Cot provides exceptional value for x-frame users. The 35-A weighs only 74 lbs, and has a record of dependability with over 20 years of use by EMS services all over the world. A full range of options and accessories enhance patient care and help reduce situations that may lead to patient or operator injury.

[Download Brochure](#)

[Read More](#)

SKU: AM-F35A





GENDRON 1190-231 BARIATRIC STRETCHER

Gendron develops, designs, and manufactures bariatric patient care products for acute care, long-term care, home care, and rehabilitation environments. The Gendron 1190-231 has a patient weight capacity of up to 1000 pounds and a litter top usable patient surface that measures 37" x 80".

[Download Brochure](#)

[Read More](#)

SKU: AM-G1190-132B



HAUSTED 5E8 POWER EYE STRETCHER

The 5E8 is a multi-position stretcher intended for treatment, transport, or recovery of a patient. With the uniquely designed articulating head section, this unit can be used for specialty procedures which require precision head positioning, such as ophthalmology, plastic surgery, or ENT procedures.

[Download Brochure](#)

[Read More](#)

SKU: AM-HAUSTED-5E8



HAUSTED ALL PURPOSE CHAIR HYDRAULIC

The Hausted All Purpose Chair (APC) is a multi-position chair and stretcher intended for intra- and inter- departmental transport of patients within a health care facility. The APC can be positioned to allow for patient treatment, transport or recovery.

[Download Brochure](#)

[Read More](#)

SKU: AM-HAUSTED-APC



HILL-ROM P8005 TRANSPORT STRETCHER

With its 700 lb weight capacity, our Transport Stretcher is an economical solution to help accommodate all patient conditions as well as your needs in this uncertain environment.

[Download Brochure](#)

[Read More](#)

SKU: AM-P8005



HILL-ROM TRANSTAR P8040



With its 700 lb weight capacity, our Transport Stretcher is an economical solution to help accommodate all patient conditions as well as your needs in this uncertain environment.

[Download Brochure](#)

[Read More](#)

SKU: AM-P8040



STRYKER 721 TRANSPORT STRETCHER

The **Stryker 721 Transport Stretcher** is a robust and versatile medical transport solution, designed to offer both comfort and functionality in various healthcare settings. This stretcher features a pneumatic Fowler backrest that allows for easy adjustment, ensuring patient comfort and support. It is equipped with both Trendelenburg and reverse Trendelenburg positions, providing flexibility for different medical needs. The stretcher has an overall bed width of 30 inches and a length of 81 inches, with a mattress accommodation up to 75 inches (mattress not included). It offers height adjustability, ranging from 27.5 inches in the low position to 36.5 inches in the high position, controlled conveniently via a foot pedal. The stretcher can handle a patient capacity of up to 500 pounds, supported by its durable steel frame and patient platform. Maneuverability is enhanced with its 5th-wheel steering and large 20.3 cm (8-inch) diameter wheels, complemented by a central brake system for secure stationary positioning. The folding siderails provide safety and ease of patient transfer, making the Stryker 721 an essential asset in patient transportation.

[Read More](#)

SKU: AM-S721

FERNO MODEL 30 NM MRI CONDITIONAL COT



Ferno Model 30 NM MRI Conditional Cots serve as the industry standard for many years and are still used by many ambulance companies and medical facilities. The Ferno Model 30 NM cot adjusts to six height levels, enabling patient transfer from most nursing home beds or hospital treatment tables.

[Download Brochure](#)

[Read More](#)

SKU: AM-F30NM



MAC PT-1000 TRANSPORT STRETCHER

The MAC PT-1000 general transport stretcher allows for easy and comfortable patient transfer with a weight capacity of up to 550 lbs. Economical and versatile, this stretcher is an ideal solution for any department or facility where cost efficient quality is required.

[Read More](#)

SKU: AM-PT1000



HAUSTED VIDEO IMAGING CHAIR

Chair designed specifically for modified barium swallow studies for AP and Lateral imaging as a procedural chair for diagnosis and treatment. The shortened base is easy to maneuver in small rooms with large imaging equipment. The radiolucent backrest adjusts to a full upright position of 90° to clear, unobstructed view for imaging. Inserts are available for pediatric procedures. This unit adjusts easily from sitting to supine and provides a rotating seat section with a stable work surface during patient treatment. Transport, treatment, procedure, and recovery can be performed on the same unit to improve case turn around and stream-line patient handling.

[Download Brochure](#)

[Read More](#)

SKU: AM-HAUSTED-VIC



HILL-ROM TRANSTAR 8010 EYE STRETCHER

Ideal for eye surgery, the Hill-Rom Surgical Stretcher (also referred to as an eye stretcher) offers outstanding mobility, functionality and quality. A surgical rail allows for easy attachment of gas delivery and drape support devices, PACU extenders and arm boards, and surgical hand tables. Articulating head section also provides enhanced patient positioning and versatility.

[Download Brochure](#)

[Read More](#)

SKU: AM-P8010



STRYKER RENAISSANCE 1061 GYNNIE OB/GYN STRETCHER

The Stryker Gynnie incorporates smart engineering to create a solution that is exceptionally easy to use. Innovative features and intuitive operation combine to not only promote usefulness, but also add efficiency in a wide range of applications.

Gynnie combines the trademark durability and features of a standard Stryker stretcher with supreme OB/GYN functionality. Ideal for pelvic exams and general use, this multi-functional stretcher can outfit an entire ER department.

[Download Brochure](#)

[Read More](#)

SKU: AM-S1061



STRYKER 735 TRANSPORT STRETCHER WITH IV POLE

The **Stryker 735 Transport Stretcher** is a thoughtfully designed piece of medical equipment that provides reliable and efficient patient transport, particularly well-suited for Ambulatory Surgery Centers (ASCs). Its standout features include a fifth-wheel mobility system that enhances traction and cornering, making navigation through tight spaces smoother and more controlled. Safety and stability are prioritized with brakes on all four 8" Omni Surface™ casters, which lock both swivel and rotation, ensuring secure stationary positioning. The stretcher is equipped with a new mattress and a 26" wide patient surface, offering comfort to patients during transit. Practicality is further enhanced with a range of features, such as an integrated storage tray with an oxygen bottle holder, fold-down siderails, and four IV receptacles. The dual-end activated four-wheel, steel-ring brake system, dual cylinder pneumatic backrest, and dual side-mounted foot control hydraulics ensure ease of use for medical staff. With a weight capacity of 500 lbs, the Stryker 735 is robust and versatile, making it an essential asset in any medical transport scenario.

[Read More](#)

SKU: AM-S735-IV

HAUSTED 578 EYE STRETCHER



The Gemini 578 is a multi-position stretcher intended for treatment, transport, or recovery of a patient. With the uniquely designed articulating head section, this unit can be used for specialty procedures which require precision head positioning, such as ophthalmology, plastic surgery, or ENT procedures.

[Download Brochure](#)

[Read More](#)

SKU: AM-HAUSTED-578



STRYKER 1080 FLUOROSCOPY STRETCHER

The **Stryker 1080 Fluoroscopy Stretcher** is engineered for optimal access, functionality, and patient safety, integrating advanced features to enhance control during fluoroscopic imaging. Designed to streamline operation and minimize patient repositioning, this specialty platform boasts full-length C-arm access, convenient fold-down siderails, and intuitive dual foot controls, increasing flexibility and ease for medical staff. With a 500 lbs weight capacity, radiolucent litter top, and a four-wheel steel ring brake system, the Stryker 1080 ensures both patient security and efficient workflow, arriving completely patient-ready with features like four IV receptacles and a comfortable 3" thick stretcher pad.

[Download Brochure](#)

[Read More](#)

SKU: AM-S1080



STRYKER M SERIES (1005/1007) STRETCHER

The Stryker M Series (1005/1007) Stretcher is a versatile and high-quality stretcher that offers various features for optimal patient comfort and convenience.

It has a thermoformed ABS base with an extra capacity storage tray, allowing for easy organization of medical equipment and supplies. With a weight capacity of 700 lbs, it can accommodate a wide range of patients. The patient surface is available in either 26" or 30" (66 cm) width and is equipped with a 3" (8 cm) 4" Enhanced Comfort Mattress, ensuring optimal comfort during transport. The stretcher also features an integrated utility tray and a litter-mounted oxygen bottle holder for easy access to essential equipment. Additionally, the Power-washable design makes cleaning and maintenance hassle-free. The stretcher is equipped with a four-wheel, steel-ring brake system with dual-end activators for added safety. The dual side-mounted foot control hydraulics with a uni-lower pedal allow for easy height adjustments. The Glideaway™ siderails with integrated push/pull handles provide ease of use and maneuverability. The stretcher also features four integrated IV receptacles for convenient access to fluids. Trend./reverse Trend. $\pm 16^\circ$ functionality, along with a pneumatic backrest and stationary footrest, ensure patient positioning options. The constant descent hydraulics provide precise control during use. The stretcher also offers dual-end brake and steer controls for effortless navigation. Furthermore, the extra 5th wheel ensures additional steering capability, making it easier to maneuver in tight spaces. Overall, the Stryker M Series (1005/1007) Stretcher offers a wide range of features and functionalities to meet the needs of healthcare professionals and provide optimal comfort and care for patients.

[Read More](#)

SKU: AM-SM104



STRYKER SM304 (1025) ZOOM DRIVE STRETCHER

Fully equipped and completely adaptable, the M-Series allows you to choose the mobility solution that best suits your needs. Supremely mobile and user-friendly, these stretchers greatly reduce the physical strain on clinicians without sacrificing patient care and comfort.

[Download Brochure](#)

[Read More](#)

SKU: AM-SM304z



HILL-ROM P8000 TRAUMA/PROCEDURE 700LB STRETCHER

The **Hill-Rom P8000 Trauma/Procedure Stretcher** is a versatile and durable patient transport stretcher designed to meet the demanding needs of acute care, trauma, and procedure environments. With a robust maximum weight capacity of 700 lbs., this stretcher provides the strength and stability required for critical patient handling. Its standardized platform offers exceptional flexibility, making it suitable for use in triage, radiology, and emergency situations. The stretcher features a low position of 24.5 inches for safe patient transfer, and a high position of 37.8 inches to facilitate caregiver access during procedures. It measures 83 inches in length and 36 inches wide with siderails extended, and offers full-length x-ray cassette access, enabling seamless imaging from head to foot. With a maximum head elevation of 90° and Trendelenburg/reverse Trendelenburg capabilities up to 18°, the P8000 ensures optimal positioning for various medical interventions. Its 8-inch casters provide smooth mobility, and the compact 3.5-inch floor clearance allows for easy maneuvering in tight spaces, making it an ideal choice for hospitals, trauma centers, and surgical units.

[Download Brochure](#)

[Read More](#)

SKU: AM-P8000-PS

HAUSTED HORIZON HYDRAULIC SERIES



The Horizon Hydraulic Stretchers are designed to provide versatility, lasting and consistent performance, and ease of use. These easy-to-clean units can support a patient during induction, transport, treatment, and recovery functions, avoiding unnecessary patient transfers to other equipment.

[Download Brochure](#)

[Read More](#)

SKU: AM-H462-EMC



HILL-ROM P8000 STRETCHER

Hill-Rom's rugged procedural stretcher is the ideal choice for Emergency, OR, PACU, or ASC settings. This stretcher offers unsurpassed mobility, comfort, and quality. Hill-Rom's innovative Steering Plus™ system allows crisp cornering and control. In addition, the system self adjusts when passing over uneven floor surfaces, preventing vibrations from reaching the patient, as experienced with larger, fixed-wheel systems.

[Download Brochure](#)

[Read More](#)

SKU: AM-P8000

HILL-ROM P8050 OB-GYN STRETCHER



With its fast and easy patient positioning, Hill-Rom's OB-GYN stretcher (P8050) is ideal for use in both maternity and emergency. Built to last year after year, this stretcher offers outstanding mobility, convenience, and quality.

[Download Brochure](#)

[Read More](#)

SKU: AM-P8050

HAUSTED 493 FLUORO STERTCHER



Refurbished Hausted 493 Fluoro-Track 493

[Read More](#)

SKU: AM-H493

INDEX

2	
25"x75"x4" REPLACEMENT STRETCHER PAD (AM-SP-5052)	4
27"x75"x4" REPLACEMENT STRETCHER PAD (AM-SP-5051)	4
A	
AM-SP-1061 Standard 4in Replacement Pads for Stryker 1061 Gynnie Stretcher (2 pc) 1061-426-200	2
C	
Champion T4 Procedure Chair Low-Seat	9
Champion T4 Procedure Chair Standard	10
Champion T4 Procedure Chair Wide Base	9
Champion T4 Procedure Chair with Seat Tilt	11
Champion T5 Chair Oxygen Holder X Series (TMA04X-15P)	6
Champion T5 External Tabletop Charger (TMA301-15)	8
Champion T5 Procedure Chair	12
Champion T5 Procedure Chair Wide	12
Champion T5 Replacement Battery Pack, T-Series (TMA300-15)	6
F	
Ferno 35A Ambulatory Stretcher	43
Ferno 35A Ambulatory Stretcher MR Conditional Cot	20
Ferno Model 30 NM MRI Conditional Cot	47
Ferno Powerflexx Ambulance Stretcher Cot	23
G	
GE Ohmeda Care Plus Incubator	22
Gendron 1190-231 Bariatric Stretcher	44
Gendron MRI 1000 Gurney	42
H	
Hausted 493 Fluoro Stertcher	54
Hausted 493 Fluoro Stretcher (New)	34
Hausted 578 Eye Stretcher	50
Hausted 578 Eye Stretcher 578EYEST Hydraulic	34
Hausted 578 Wide Eye Stretcher 578EYXST Hydraulic	33
Hausted 5E8 Power Eye stretcher	44
Hausted 5E8 Wide Power Eye stretcher 5E8EYXST	33
Hausted 5E8-2 Power Eye stretcher 5E82EYEST	32
Hausted All Purpose Chair Hydraulic	45
Hausted APC All Purpose Chair	27
Hausted EPC500 Procedure Chair	36
Hausted ESC2 Powered Ophthalmology Surgical Chair	36
Hausted ESC2 Powered Ophthalmology Surgical Chair w Manual Base	5
Hausted Horizon Hydraulic Series	53
Hausted Horizon Series Hydraulic Stretcher 462-EMC	24
Hausted MBC Mammography/Biopsy Chair	35
Hausted SurgiChair ESC-EYE (Eye Surgery Chair)	42
Hausted Video Imaging Chair	48

Hausted Video Imaging Chair VIC429ST 35
Hill-Rom C2000 Infant Incubator 23
Hill-Rom P8000 Stretcher 53
Hill-Rom P8000 Trauma/Procedure 700lb Stretcher 52
Hill-Rom P8005 Transport Stretcher 45
Hill-Rom P8050 OB-GYN Stretcher 54
Hill-Rom Transtar 8010 Eye Stretcher 48
Hill-Rom TranStar P8040 46

M

MAC MEDICAL 5th Wheel Transport Stretcher 13
MAC MEDICAL General Transport Stretcher PT1001 8
Mac PT-1000 Transport Stretcher 47
Mac PT-1000 Transport Stretcher (Refurbished) 27
Midmark 500 Baby Crib 41

P

PAD, HILL-ROM 8005 STRETCHER 3
Pedigo 5400 W Stretcher, Side Brake Only 25
Pedigo 547 SLS Surgical Lounge Stretcher 40

S

Standard Universal 26inx75inx4in Replacement Pad for HillRom P8000 / P8005 3
Stretcher Pad, 30 x 76 x 4in 2
Stryker 1001 Advantage Stretcher 29
Stryker 1009 Advantage Stretcher 15
Stryker 1037 Trauma Stretcher 18
Stryker 1069 Eye Stretcher 28
Stryker 1079 Eye Stretcher w/ Pneumatic Fowler 39
Stryker 1080 Fluoroscopy Stretcher 50
Stryker 1089 Eye Stretcher 39
Stryker 1105 Stretcher 37
Stryker 1115 Prime Big Wheel Stretcher 31
Stryker 1125 Prime Zoom Drive Stretcher 30
Stryker 1501 Renaissance Series stretcher with IV pole 21
Stryker 1509 Advantage Stretcher 15
Stryker 1710 Renaissance Stretcher 17
Stryker 5050 Stretcher Chair 32
Stryker 5050 stretcher chair w/ transfer board armrests 21
Stryker 6500 Power Pro XT Powered Cot 40
Stryker 6506 Power Pro XT Powered Cot 11
Stryker 721 Transport Stretcher 46
Stryker 735 Transport Stretcher with IV Pole 49
Stryker 747 Transport Stretcher 14
Stryker M Series (1005/1007) Stretcher 51
Stryker M Series Model 1015 Stretcher, with Big Wheel 30
Stryker MX Pro 6080 Emergency Gurney 19
Stryker Prime TC Transport Chair 13
Stryker Renaissance 1061 Gynnie OB/GYN Stretcher 49
Stryker SM304 (1025) Zoom Drive Stretcher 52
Stryker Stair-PRO Stair Chair 29
Stryker Stretcher Model 735 without IV Pole 5
Stryker 1068 Eye Surgery Stretcher 20
Styker 1211 Renaissance Stretcher 18

Styker 1231 Renaissance Stretcher 16
Styker 1731 Renaissance Stretcher 16
Styker Renaissance 1210 Emergency 5th Wheel Stretcher 17

T

TransMotion Medical Anterior Wrist Rest 24
Transmotion Medical TMM5 Eye Stretcher 28
Transmotion TMM4 Multi-Purpose Stretcher-Chair Series 26
Transmotion TMM5PLUS Eye Procedure Chair 38
Transmotion TMM5PLUS Eye Procedure Chair (AM-TMM5PLUS-TB) 38
Transmotion TMM5PLUS Eye Procedure Chair XTB 26

W

Winco Stretchair 41