

# TABLE OF CONTENTS

<b>Ultrasound Machines</b> .....	4
Siemens 9L4 Linear Array Transducer .....	5
Edan U50 Prime Ultrasound .....	5
GE Voluson E8 BT16 Ultrasound System OB/GYN Package .....	6
Edan DUS 60 B&W Digital Ultrasound .....	6
Mindray TE5 Ultrasound (with 1 Probe) .....	7
Chison SonoAir 70 with one Standard Transducer and Trolley .....	8
Mindray TE5 Ultrasound (with 2 Probes) .....	9
Codonics 810-DVB DirectVista Blue Film 8x10 500 sheets .....	11
Codonics Horizon GS Multi-Media Image Printer .....	11
Sony UPP210HD Equivalent thermal paper [ULSTAR-2100HD] (5 rolls/box) .....	12
Sony Wireless Print System UPA-WU10 .....	12
Siemens ACUSON DAX Probe .....	12
Siemens ACUSON Sequoia Ultrasound System .....	13
Mindray DP-50 Expert Ultrasound with 2 Probes .....	14
Mindray DP-50 Expert Ultrasound with 1 Probe .....	14
Mindray MX7 Ultrasound Cart Only .....	15
Mindray MX7 Ultrasound System - 3 Probes .....	16
Mindray Zonare S3 Ultrasound .....	16
Sonosite S-ICU w/ Probe and Stand .....	17
Philips Epiq 7C Ultrasound with 2 probes .....	18
GE VIVID E9 XD Clear 2 Probes Customers Choice .....	19
Philips 70 G Ultrasound with 2 Probes of customer's choice .....	20
GE Logiq S8 R2 w/ 2 Probe of Customers Choice .....	21
GE Voluson E10 BT16 Ultrasound System OB/GYN Package .....	22
GE Voluson E6 BT13 Ultrasound System OB/GYN Package .....	22
GE Venue FIT R4 with 2 Probes and Roll Stand .....	22
Sonosite S II Ultrasound with stand and 2 probes .....	23
SonoSite S Series Ultrasound System 2 Probes and Stand .....	24
GE Venue GO Ultrasound with 2 probes and Cart .....	25
GE Venue 50 with 2 Probes and Cart .....	25
Mindray MX7 Ultrasound System - 2 Probes .....	26
GE Venue R3 Ultrasound with 2 probes .....	27
Philips Epiq 5G Ultrasound with 2 probes .....	27

GE Logiq E9 XD Clear .....	28
Samsung HM70A Vascular Package (2 Probes) .....	28
Mindray DP 50 Ultrasound w/ 2 Probes .....	29
Mindray MX7 Ultrasound System .....	29
GE Logiq P6 BT11 Ultrasound with 1 Probe .....	30
Chison Sonobook 6 with 2 probes .....	30
Chison Sonobook 6 .....	31
Chison Sonotouch 30 .....	31
Sonosite S-Nerve With Probe and Printer .....	32
Chison ECO6 .....	32
GE Logiq E with 2 Probes, Abdominal and, Printer and Cart .....	33
Sonosite M Turbo .....	33
Sonosite Titan .....	34
GE VIVID Q Portable Ultrasound w/ Cart and Cardiac Probe .....	34
Aloka Alpha 5 .....	35
GE Logiq P5 Ultrasound System .....	35
Toshiba APLIO 500 CV ultrasound Imaging System .....	36
Chison EBIT 50 Ultrasound with 18mhz Probe .....	36
GE Logiq P9 Ultrasound w/ Matrix Probe .....	37
GE Vivid I BT12 .....	37
Sonoscape A6 .....	38
Edan Acclarix AX8 .....	38
Samsung PT60A .....	39
Philips IU-22 Ultrasound with two probes .....	39
Konica Minolta Sonimage HS1 Ultrasound .....	40
GE Voluson E6 Ultrasound System with HD Live OB/GYN Package .....	40
Sonosite Micromaxx Ultrasound .....	41
Konica Minolta Sonimage P3 Handheld Ultrasound and Probe .....	41
Sonosite 180 Plus with Vaginal and Abdominal Curved Transducer .....	42
Aloka ProSound Alpha 10 .....	42
Chattanooga Medical 2 Channel Combination Unit .....	43
GE Logiq E9 XDClear .....	43
Chison ECO3 .....	44
SonoScape A6 with Biplane Transducer .....	44
GE VIVID S6 Ultrasound Cardiology Package w/ 3 transducers .....	45
BK Medical Falcon .....	45
Samsung Accuvix A30 Ultrasound .....	46
Philips iE33 Ultrasound .....	46
Philips HD11 XE Ultrasound .....	47
Mindray M5 Ultrasound .....	47

Mindray DP-50 Ultrasound .....	48
Edan DUS 60 VET .....	48
GE Logiq e .....	49
GE Logiq Book XP .....	49



## ULTRASOUND MACHINES

**Auxo Medical understands the importance a durable ultrasound machine can make in meeting the diagnostic needs of your physicians and patients. Auxo Medical carries refurbished ultrasound machines some the most trusted brands, including [GE](#), [Mindray](#), [Philips](#) and [Edan](#).**

Fortunately, our devices offer durability and superb value to fit any budget. Available in a wide variety of sizes and features, including cart mounted or hand held units. In addition, Auxo Medical has ultrasound machines that can cover the widest range of applications. Many of our models feature the latest innovative technology for superb image quality across a variety of diagnostic applications. Additionally, this includes abdominal, OB/GYN, vascular, biopsy, cardiac, pediatric, and more. Ultimately, whether your facility is looking for portability, color imaging, or extended battery life. Auxo Medical has a cost-effective ultrasound machine option ready to improve your medical practice.

**Our catalog consists of brand new, reconditioned and refurbished equipment. Would you like to filter the equipment by:**

**[BRAND NEW](#)**

**[RECONDITIONED](#)**

**REFURBISHED**



## Siemens 9L4 Linear Array Transducer

## SIEMENS 9L4 LINEAR ARRAY TRANSDUCER

The **Siemens 9L4 Linear Array Transducer** is a high-frequency ultrasound probe designed for detailed imaging in various clinical applications. Its linear array form factor makes it ideal for superficial imaging of the breast, vascular, abdominal, and musculoskeletal structures. Operating within a frequency range of 4.0 to 9.0 MHz, it provides high-resolution images suitable for precise diagnostics. Compatibility is limited to the **Siemens Acuson S3000** ultrasound system, ensuring seamless integration for advanced imaging in medical practices.

[Read More](#)

**SKU:** AM-S-9L4



## EDAN U50 PRIME ULTRASOUND

The **Edan U50 Prime Ultrasound** is a versatile, high-performance imaging device designed for a wide range of medical applications including abdomen, obstetrics, gynecology, urology, small parts, orthopedics, cardiology, and peripheral vessels. Featuring a high-resolution LED screen, it offers exceptional image clarity while maintaining a lightweight design for easy mobility within clinical environments. The system comes with a large capacity integrated hard drive for storing scans and data, and supports advanced imaging techniques such as Color Doppler, Power Doppler, and Pulse Wave Doppler. It incorporates cutting-edge technologies like Multi-Beam-Forming (mBeam), Beam-Forming Optimization (BFO), Phased Inversion Harmonic Compound Imaging (EHCI), and Speckle Resistance (eClear) for superior image quality. The device offers multi-frequency broadband transducer options, multi-pseudo-color displays, and multi-language software packages to suit diverse clinical needs. Additional features include an optional built-in rechargeable Li-ion battery, DICOM 3.0 compatibility, footswitch, mobile trolley, carrying case, and needle-guided brackets, making the Edan U50 Prime a flexible and reliable tool for comprehensive ultrasound imaging.

[Read More](#)

**SKU:** AM-U50P

## GE VOLUSON E8 BT16 ULTRASOUND SYSTEM OB/GYN PACKAGE

The **GE Voluson E8 BT16 Ultrasound System OB/GYN Package** is a state-of-the-art imaging solution designed to deliver exceptional clarity and precision in obstetrics and gynecology diagnostics. Featuring advanced 4D imaging capabilities, high-resolution probes, and intelligent workflow tools, this system provides detailed visualization of fetal development, uterine structures, and ovarian conditions with remarkable accuracy. Its ergonomic design and user-friendly interface enhance workflow efficiency, while integrated image management and reporting tools streamline documentation. The OB/GYN package includes specialized transducers optimized for obstetric and gynecological exams, ensuring comprehensive assessment capabilities. Built for reliability and clinical excellence, the GE Voluson E8 BT16 empowers healthcare providers to deliver confident diagnoses and improved patient outcomes in obstetric and gynecological care.

[Read More](#)

**SKU:** AM-GE-VOLUSON-E8-BT16



## EDAN DUS 60 B&W DIGITAL ULTRASOUND

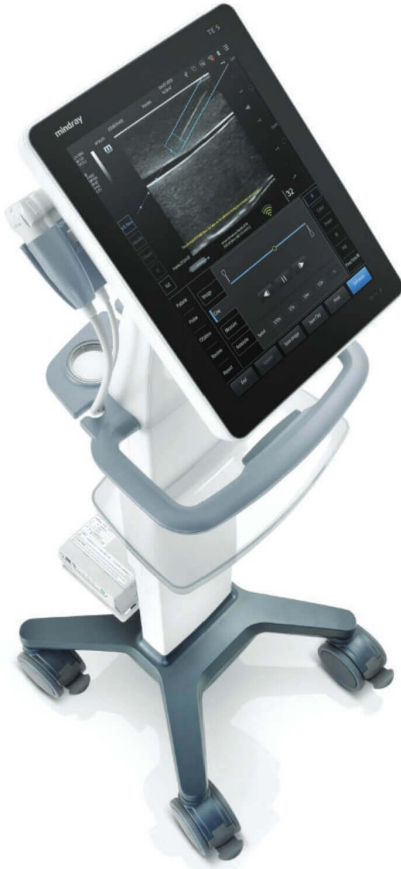
The **Edan DUS 60 B&W Digital Ultrasound** is a cutting-edge diagnostic tool, renowned for its innovative technologies that enhance imaging quality and user experience. It features phase-inversion harmonic compound imaging, which significantly improves contrast resolution, making it ideal for a variety of medical applications. The inclusion of speckle reduction technology further refines image quality by improving contrast resolution while maintaining detail, essential for accurate diagnoses. Its multi-beam technology, coupled with synthetic aperture, dynamic receive focusing, dynamic frequency scanning, and dynamic apodization, ensures superior image clarity and precision. The multi-frequency transducer technology enhances transducer utility across multiple frequencies, although probes are not included. The ultrasound system is designed with a user-friendly workflow in mind, featuring an intuitive control panel that reduces the learning curve for medical professionals. It supports a wide range of applications, including abdomen, obstetrics, gynecology, endovaginal, small parts, musculoskeletal, vascular, urology, endorectal, cardiology, and pediatrics. With its compact



and lightweight design, the device offers two hours of battery-powered operation, a 12.1" TFT-LCD monitor, and multiple peripheral ports, making it a versatile and portable choice for healthcare settings.

[Read More](#)

**SKU:** AM-DUS-60



## MINDRAY TE5 ULTRASOUND (WITH 1 PROBE)

The **Mindray TE5 Ultrasound** system stands out as a specialty device meticulously designed to cater to the rigorous demands of contemporary ultrasound environments. This system offers enhanced image quality and an intuitive touch-enabled interface, making it versatile for a wide array of clinical applications. Among its standout features is the eSpacial Navi™ technology, a 4D magnetic needle navigation system that significantly improves needle visualization and localization during procedures, thereby boosting physician confidence and patient safety. The system also incorporates the second-generation iNeedle+™ technology, which automatically detects the needle angle to enhance visibility on both linear and convex transducers. Additionally, the iVocal technology leverages artificial intelligence for voice recognition, providing a hands-free scanning experience, which is particularly useful in sterile environments. The TE5 is equipped with a 15-inch seamless touch screen, a 128GB solid-state hard disk, and advanced imaging features such as iBeam™, iClear™, and PSH™. With comprehensive connectivity options, including network ports, HDMI output, and USB 3.0 ports, along with a built-in lithium-ion battery and wireless adapter, the TE5 system ensures both functionality and portability. It is further complemented by a mobile stand and a choice of one probe, underscoring its adaptability and user-centric design.

[Read More](#)

**SKU:** AM-TE5-1P





## CHISON SONOAIR 70 WITH ONE STANDARD TRANSDUCER AND TROLLEY

The **Chison SonoAir 70** was designed with advanced imaging technology to provide superior clarity for every scan. Its high-resolution imaging capabilities ensures that healthcare providers can make accurate diagnoses quickly. The Chison SonoAir 70's ergonomic structure is both lightweight and portable, making for effortless transportation between rooms or clinics and ideal for medical practices of all sizes. Its intuitive user interface and customizable settings makes for a personalized experience and allows for efficient optimization. With its advanced features, ergonomic design, intuitive operation, and comprehensive range of applications, this system ensures that you'll have the right tools at your disposal for every diagnostic challenge.

[Read More](#)

**SKU:** AM-CHISON-SA70-1P-C

## MINDRAY TE5 ULTRASOUND (WITH 2 PROBES)



The **Mindray TE5 Ultrasound** system stands out as a specialty device meticulously designed to cater to the rigorous demands of contemporary ultrasound environments. This system offers enhanced image quality and an intuitive touch-enabled interface, making it versatile for a wide array of clinical applications. Among its standout features is the eSpacial Navi™ technology, a 4D magnetic needle navigation system that significantly improves needle visualization and localization during procedures, thereby boosting physician confidence and patient safety. The system also incorporates the second-generation iNeedle+™ technology, which automatically detects the needle angle to enhance visibility on both linear and convex transducers. Additionally, the iVocal technology leverages artificial intelligence for voice recognition, providing a hands-free scanning experience, which is particularly useful in sterile environments. The TE5 is equipped with a 15-inch seamless touch screen, a 128GB solid-state hard disk, and advanced imaging features such as iBeam™, iClear™, and PSH™. With comprehensive connectivity options, including network ports, HDMI output, and USB 3.0 ports, along with a built-in lithium-ion battery and wireless adapter, the TE5 system ensures both functionality and portability. It is further complemented by a mobile stand and a choice of two probes, underscoring its adaptability and user-centric design.

[Read More](#)

**SKU:** AM-TE5-2P





## CODONICS 810-DVB DIRECTVISTA BLUE FILM 8X10 500 SHEETS

The **Codonics 810-DVB DirectVista Blue Film** is a specialized medical imaging film designed for high-quality diagnostic purposes. Packaged conveniently in a box containing 500 sheets, each measuring 8 inches by 10 inches, this product ensures ample supply for continuous usage in demanding medical environments. The 810-DVB model is specifically engineered to produce crisp, clear, and detailed images essential for accurate diagnostics. This blue film is compatible with a range of medical imaging equipment, making it a versatile choice for healthcare facilities focused on delivering precision in diagnostic imaging. Its size and quantity make it particularly suitable for clinics and hospitals looking to maintain a steady workflow in radiography departments.

8" x 10"  
500 sheets  
810-DVB

[Read More](#)

**SKU:** 1HCE-BF533



## CODONICS HORIZON GS MULTI-MEDIA IMAGE PRINTER

The **Codonics Horizon GS Multi-Media Image Printer** stands out as a versatile and compact solution for medical imaging needs, adaptable to various healthcare settings. This high-performance device supports a range of media types, including color and grayscale paper as well as blue and clear film, making it highly suitable for producing diagnostic images, such as X-rays, MRI scans, and ultrasound images. Its speed and efficiency ensure that medical professionals can quickly access high-quality prints for review, consultation, or patient records. Furthermore, the Horizon GS is renowned for its reliability and ease of use, featuring intuitive interfaces and seamless integration with existing hospital imaging systems. This combination of versatility, efficiency, and user-friendliness makes the Codonics Horizon GS an invaluable tool in enhancing the quality of patient care and optimizing workflow in medical facilities.

[Read More](#)

**SKU:** AM-CD-HZ-GS-s

## SONY UPP210HD EQUIVALENT THERMAL PAPER [ULSTAR-2100HD] (5 ROLLS/BOX)

Manufactured by Durico, a well-regarded producer of high-quality medical imaging supplies, this thermal paper ensures sharp, clear images that are crucial for accurate diagnostics. Each roll is formulated to produce high-definition prints, capturing intricate details necessary for medical analysis. The paper's enhanced sensitivity allows for consistent print quality, making it a reliable choice for healthcare professionals who require precise and durable medical images. Additionally, the use of this specific equivalent to Sony's original product guarantees that the printer warranty remains intact, while also offering a cost-effective alternative without compromising on quality or performance.

**For use with UP-971AD Sony Printers (5 rolls/box)**

[Read More](#)

**SKU:** ULSTAR2100HD

**Price:** \$159.95

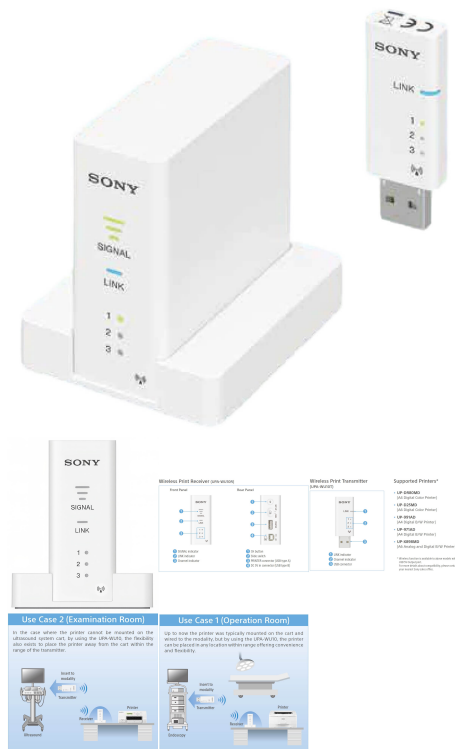


## SONY WIRELESS PRINT SYSTEM UPA-WU10

The **Sony UPA-WU10 Wireless Print System** allows cable-free connection of compatible Sony medical printers with compatible surgical endoscopes, ultrasound systems, and other hospital imaging modalities.\* The system effectively replaces a conventional wired USB connection between printer and imaging modality. It's ideal for busy clinical environments, where modalities are constantly being moved between different O.R. and treatment rooms. The all-in-one wireless print solution also resolves the problem of limited space on medical carts, allowing connection between the modality and an "off-cart" printer without a lengthy USB cable.

[Read More](#)

**SKU:** UPA-WU10





## SIEMENS ACUSON DAX PROBE

The **Siemens ACUSON DAX Probe** represents a significant advancement in ultrasound technology, integrating cutting-edge InTune technology that includes gesture detection for seamless operation. It is equipped with a compact-pinless connector and Multi-D technology, ensuring robust connectivity and versatile functionality. Notably, the probe offers exceptional penetration up to 40 cm, making it suitable for a comprehensive range of clinical applications including abdominal, fetal, and pediatric imaging. Additionally, the ACUSON DAX Probe is designed with a reduced push force feature, enhancing comfort and efficiency, particularly when dealing with technically difficult patients who have a limited imaging window. This combination of advanced technological features and user-centric design makes it an invaluable tool in medical diagnostics, improving both the experience and the outcomes of ultrasound examinations.

[Read More](#)

**SKU:** AM-Acuson-DAX



## SIEMENS ACUSON SEQUOIA ULTRASOUND SYSTEM

The **ACUSON Sequoia™ ultrasound system**, a pioneering achievement in medical imaging technology, has consistently set industry benchmarks with its superior image quality, color sensitivity, and advanced imaging modes. The original model's immense popularity has only been eclipsed by its latest iteration, which introduces groundbreaking enhancements that elevate diagnostic capabilities to new heights. The new ACUSON Sequoia integrates unique and patented technologies designed to virtually eliminate color flash artifacts and achieve deeper tissue penetration compared to conventional systems. It also offers extended viewing times for contrast agents, providing clinicians with invaluable extra time to identify additional incidental lesions, thereby enhancing diagnostic accuracy and patient outcomes. Developed through extensive collaboration involving 170 workshops with 365 ultrasound users worldwide, the system is finely tuned to meet the practical needs and preferences of its operators, ensuring ease of use and reduced variability in patient care. The introduction of the new BioAcoustic™ Imaging Technology further refines the system's ability to track ultrasound signals with exceptional precision, making the ACUSON Sequoia an indispensable tool across a wide range of clinical applications including abdominal, OB-GYN, musculoskeletal, cardiac, vascular, urology, and small parts imaging. The system's thoughtful design, complemented by a suite of high-tech probes and wireless capability, underscores its status as a leader in the evolution of ultrasound technology, tailored by and for medical

professionals to advance patient care.

[Read More](#)

**SKU:** AM-S-Acuson-Sequoia-5P



## MINDRAY DP-50 EXPERT ULTRASOUND WITH 2 PROBES

The Mindray DP-50 Expert Ultrasound stands out in the medical imaging field with its advanced features designed to enhance diagnostic accuracy and streamline workflows. At the core of its technology is Purified Harmonic Imaging, which significantly improves contrast resolution, delivering clearer images with less noise and sharper, continuous edges. Its iBeam™ function leverages multiple scanning angles to form a single, more detailed image, while iClear™ technology automatically detects structures to boost image clarity, ensuring smoother tissues and cleaner 'no echo' areas. The system's Multi-Beam Formation technology allows for up to four times the tasking for each transmitted beam, enhancing time resolution and frame rate. For convenience, the iStorage™ feature enables the direct transfer of images and reports to a PC via a network cable, and iZoom™ offers an instant full-screen view at the click of a button. The iStation™ facilitates efficient patient information management, and iTouch™ provides instant auto image optimization in B mode. Designed with user experience in mind, the DP-50 Expert features a sleek, streamlined shape, a user-friendly keyboard, and controls, plus a lightweight system for increased mobility. The high-resolution, wide-angle 15" LCD with tilt functionality ensures optimal viewing angles. Each unit comes with two probes of the customer's choice, making it a versatile and powerful tool for a wide range of diagnostic applications.

[Read More](#)

**SKU:** AM-MR-DP50-E-2P



## MINDRAY DP-50 EXPERT ULTRASOUND WITH 1 PROBE

The Mindray DP-50 Expert Ultrasound stands out in the medical imaging field with its advanced features designed to enhance diagnostic accuracy and streamline workflows. At the core of its technology is Purified Harmonic Imaging, which significantly improves contrast resolution, delivering clearer images with less noise and sharper, continuous edges. Its iBeam™ function leverages multiple scanning angles to form a single, more detailed image, while iClear™ technology automatically detects structures to boost image clarity, ensuring smoother tissues and cleaner 'no echo' areas. The system's Multi-Beam Formation technology allows for up to four times the tasking for each transmitted beam, enhancing time resolution and frame rate. For convenience, the iStorage™ feature enables the direct transfer of images and reports to a PC via a network cable, and iZoom™ offers an instant full-screen view at the click of a button. The iStation™ facilitates efficient patient information management, and iTouch™ provides instant auto image optimization in B mode. Designed with user experience in mind, the DP-50 Expert features a sleek, streamlined shape, a user-friendly keyboard, and controls, plus a lightweight system for increased mobility. The high-resolution, wide-angle 15" LCD with tilt functionality ensures optimal viewing angles. Each unit comes with one probe of the customer's choice, making it a versatile and powerful tool for a wide range of diagnostic applications.

[Read More](#)

**SKU:** AM-MR-DP50-E-1P

## MINDRAY MX7 ULTRASOUND CART ONLY

The **Mindray MX7 Ultrasound Cart** is an innovative solution designed to enhance the flexibility and efficiency of diagnostic procedures in various healthcare settings. Engineered with the user in mind, this cart is an epitome of ergonomic design and mobility, allowing healthcare professionals to bring high-quality ultrasound imaging directly to the patient's bedside or to any location within a medical facility where it's needed. The MX7 cart is built to accommodate the Mindray MX7 ultrasound system securely, providing easy access and stable support for the device. Its thoughtful design includes features such as adjustable height settings, ample storage for probes and accessories, and smooth-rolling casters for effortless maneuverability. By providing a dedicated, mobile platform for the MX7 ultrasound system, the Mindray MX7 Ultrasound Cart Only enhances workflow, improves patient care, and optimizes the use of ultrasound technology in a wide array of clinical environments.

[Read More](#)

**SKU:** AM-MX7-C



## MINDRAY MX7 ULTRASOUND SYSTEM - 3 PROBES

The MX7 Ultrasound System has been thoughtfully designed to overcome the obstacles clinicians face in today's challenging healthcare environments. With a customizable touchscreen and revolutionary, software-based beamformer technology, the MX7 System combines excellent image quality with an intuitive user experience to help ensure reliable and efficient diagnosis during the most challenging exams.

**Includes x3 Transducer of customers choice from [Product-Sheet-MX7-Transducer-Family](#)**

[Read More](#)

**SKU:** AM-MX7-3P



## MINDRAY ZONARE S3 ULTRASOUND

Powered by our industry-leading virtual beamformer and image processing technology, ZONE Sonography® Technology+ (ZST+) allows the acquisition and processing of large zones of data 10 times faster than traditional architectures. This provides uniform and detailed high-resolution images with reduced motion artifact and a precise display of hemodynamics.

Timely answers and exceptional patient care are more important now than ever before. The ZS3 System's advanced capabilities, like Contrast Enhanced Ultrasound (CEUS) and Elastography tools, may provide additional information needed for confident decision making.

An intuitive and easy-to-use interface streamlines workflows, helps reduce keystrokes, and improves exam efficiency.

Includes: 1 C6-2 convex probe

[Read More](#)

**SKU:** AM-MR-ZS3-1P



## SONOSITE S-ICU W/ PROBE AND STAND

The **S-ICU** is part of Sonosite's S-series of ultrasound machines which all share similar characteristics, form factors, and appearance but are designed for various areas in a hospital. For example, S-Cath is intended for radiology, and S-Fast is made for ERs.

The S-ICU ultrasound machine is budget-friendly, has excellent image quality, has intuitive walk-up usability. They are fast ultrasound machines perfect for critical care environments.

**Technical Specs:** 10.4" LCD, Weight: 8.5 lbs (3.8 kg), Dimensions: 15.1" H x 11.6" W x 6.1" D / 38.4 cm H x 29.5 cm W x 15.5 cm D, The Sonosite S-ICU is an easy-to-use ultrasound system designed specifically for the demanding environment of the intensive care units (ICUs) in hospitals. It is available with a traditional cart with lock-out wheels or a wall-mount version with a convenient swivel/articulating arm.

[Read More](#)

**SKU:** AM-SONO-S-ICU-1P





## PHILIPS EPIQ 7C ULTRASOUND WITH 2 PROBES

### **Philips nSIGHT Imaging is a totally new approach**

The Philips proprietary nSIGHT Imaging architecture introduces a totally new approach to forming ultrasound images. Unlike conventional systems that form the image line by line, nSIGHT creates images with superb resolution down to the pixel level.

### **Extraordinary architecture**

nSIGHT Imaging incorporates a custom multi-stage precision beamformer along with massive parallel processing. This proprietary architecture captures an enormous amount of acoustic data from each transmit operation and performs digital beam reconstruction along with mathematically optimized focal processing to create real-time images with exceptional resolution and uniformity.

### **xMATRIX is our most leading- edge, versatile ultrasound transducer technology**

No other premium ultrasound system can run the complete suite of the world's most innovative ultrasound transducers. With the touch of a button, xMATRIX offers all modes in a single transducer: 2D, M-mode, color Doppler, Doppler, iRotate, Live xPlane, Live 3D, Live 3D Zoom, and Live 3D Full Volume.

[Read More](#)

**SKU:** AM-EPIQ-7C-2P

## GE VIVID E9 XD CLEAR 2 PROBES CUSTOMERS CHOICE

**Vivid E9** is GE Healthcare's first cardiovascular ultrasound system built specifically for 4D imaging—from ergonomics to image acquisition to data management. Available in both 2D and 4D configurations. Featuring our Accelerated Volume Architecture 4D platform for increased processing power compared to GE Healthcare's previous 4D scanner. Advanced quantification tools help streamline workflow for enhanced productivity. These tools include 4D Stress and 4D Auto LV Quantification. One-touch ease of use and intuitive workflow puts 4D at your fingertips. As 4D becomes routine in your clinical practice, you still need excellent 2D image quality. Vivid E9 handles 2D imaging with equal power, precision, and agility, made possible with our 4V-D transducer, the second-generation 4D transducer, and the M5S/M5Sc transducers single-crystal matrix array and XDclear transducer technology. Open the door to 4D and its many new possibilities.

Download the GE-vidid-series  
Transducer Guide

[Read More](#)

**SKU:** AM-VIVID-E9-XDC-2P





## PHILIPS 70 G ULTRASOUND WITH 2 PROBES OF CUSTOMER'S CHOICE

The **Philips Affiniti 70** is the successor to Philips' popular HD15 shared service color Doppler ultrasound machine. It's designed as a "budget" shared service ultrasound, and includes an architecture based on its premium EPIQ series of ultrasound machines, offering some of its best technology to those with tighter budgets.

With regards to ultrasound probes, the Philips Affiniti 70 ultrasound supports a wide range of small, lightweight transducers. As a complete shared service ultrasound, it has 4D obstetric imaging, ShearWave elastography, and provides both adult and pediatric echocardiography (including TEE) and stress echo.

The Affiniti 70 ultrasound is also designed to help you work more comfortably and efficiently. With a 21.5" articulating fold-down LCD screen and touchscreen tablet-like user interface, the Affiniti 70 has a simplified user interface for "walk-up" usability, helping make it ideal for busy offices with multiple users.

[Read More](#)

**SKU:** AM-PH-70G-2P



## GE LOGIQ S8 R2 W/ 2 PROBE OF CUSTOMERS CHOICE

The **LOGIQ® S8** provides easy-to-use tools that help busy departments and practices improve workflow while securing exam consistency. All of that in a streamlined and innovative design, ensuring exceptional user comfort.

With a fully adjustable console and flat-screen, a very compact design and incredible scanning comfort, the LOGIQ® S8 follows the Society of Diagnostic Medical Sonographers (SDMS) guidelines.

With the LOGIQ® S8, moving your ultrasound system around is easier than ever before. Four active pinless ports and one parking slot improve your flexibility in moving through a wide range of clinical applications. Probe holders on both sides of the operating panel and light-weight cables keep the needed transducers available at your fingertips. You can easily customize the system settings and commands using the large configurable touchscreen.

[Read More](#)

**SKU:** AM-LOGIQ-S8-2P



## GE VOLUSON E10 BT16 ULTRASOUND SYSTEM OB/GYN PACKAGE

To help meet your extraordinary clinical and workflow needs, the Voluson E10 introduces the innovative Radiance System Architecture. The Radiance System Architecture sets a new standard in imaging performance to give you\*:

- **MORE CLARITY:** 4x Ultrasound Pathways for spectacular 2D and 3D/4D images with increased penetration.
- **MORE SPEED:** 10x the data transfer rate for higher resolution and very fast frame rates.
- **MORE FLEXIBILITY:** 4x the processing power for advanced applications and efficient workflow.

[Read More](#)

**SKU:** AM-GE-VOLUSON-E10-BT16



## GE VOLUSON E6 BT13 ULTRASOUND SYSTEM OB/GYN PACKAGE

SonoBiometry perform biometry measurements.

SonoNT (Sonography-based Nuchal Translucency) and SonoIT (Sonography-based Intracranial Translucency) –Voluson technologies that help provide semi-automatic, standardized measurements of the nuchal and intracranial translucency as early as 11 weeks. Both tools can integrate easily into your workflow. SonoNT helps avoid the inter-and intra-observer variability that comes with manual measurements, and helps provide you with the reproducibility you demand.

[Read More](#)

**SKU:** AM-GE-VOLUSON-E6-BT13

## GE VENUE FIT R4 WITH 2 PROBES AND ROLL STAND

For your Point of Care

A small but efficient point of care ultrasound system, **Venue Fit** is a simple, fast and precise partner for your point of care. Designed to fit your practice, fit your space and fit your needs, the streamlined — yet powerful — Venue Fit features the smallest footprint in the Venue™ family while still maintaining the features you've come to expect. Designed to handle the busywork so you can focus on your patients, the Venue Fit is ready when and where you are.

[Read More](#)

**SKU:** AM-GE-VENUE-FIT-R4



## SONOSITE S II ULTRASOUND WITH STAND AND 2 PROBES

The **FujiFilm Sonosite S II Ultrasound with stand and two probes** is a versatile and efficient imaging solution designed to enhance clinical productivity and adapt seamlessly to various hospital environments. Its intuitive touchscreen interface, complemented by physical knobs, facilitates easy control over gain and depth, while the flexible management of caliper, zoom, and color box through a virtual trackpad or touchscreen caters to diverse procedural needs. The system's ability to switch exam types or transducers with just two touches, thanks to its embedded dual transducer connector, further streamlines operations. Offering advanced imaging capabilities with Continuous Wave and Pulsed Wave Doppler, the Sonosite SII ensures sharper imaging results. Its compact design, allowing for a zero footprint option, is ideal for space-constrained areas, and its operation with a sterile drape makes it suitable for sterile environments. The ultrasound system comes equipped with ample storage, including a lockable drawer with a tray, and features such as 2D Greyscale/Color Doppler, CPD, M-Mode, DICOM, PW Tissue Harmonics, and Clips HD. The package includes a user manual and two transducers: HFL38xi for Popliteal Artery imaging with Doppler and rC60xi for Abdominal Right Upper Quadrant examinations, along with a convenient trolley for mobility.

[Download Brochure](#)

[Read More](#)

**SKU:** AM-SONO-SII-2P



## SONOSITE S SERIES ULTRASOUND SYSTEM 2 PROBES AND STAND

Seamlessly archive and store images with DICOM® 3.0 using Ethernet or wireless capabilities. Crisp and clear imaging, featuring SonoHD™ Imaging Technology - with 16x the processing power of our previous generation. Mount your system at the point of care for instant ultrasound access and a zero footprint or use it on a highly maneuverable S Series V-Universal™ Stand.

Optimize your target with just two controls - one for depth, one for gain. Transducer cable length of up to six feet.

[Read More](#)

**SKU:** AM-SONO-S-2P



## GE VENUE GO ULTRASOUND WITH 2 PROBES AND CART

Created for your point-of-care, the **Venue Go™ ultrasound** was designed for your needs and adapts for your challenges. Its flexible design allows you to go from cart to table to boom with ease, providing your department with needed adaptability. AI-enabled tools help enable fast assessments, simplify the complex and support your life-saving decisions. Built with a small footprint and increased portability, Venue Go provides the flexibility you need to scan, diagnose and treat with ease and accuracy across a wide range of environments and care areas.

[Read More](#)

**SKU:** AM-GE-VENUE-GO-2P





## GE VENUE 50 WITH 2 PROBES AND CART

The **GE Venue 50** is a high-performance tablet ultrasound system with an easy-to-use touchscreen and enhanced needle visibility. It boots up while you put your gloves on. The Venue 50's advanced tools and overall simplicity help provide clinical precision with ease. The Venue is a portable ultrasound designed for Anesthesia, Musculoskeletal, Point of Care, Interventional, and Vascular Access applications. The sleek and portable design easily fit into tight spaces. The Venue 50 has a single surface screen can be easily cleaned and disinfected with medical-grade cleaning solutions. Flexible data management and connectivity options, with optional DICOM, help speed up image storage and archiving on the Venue 50 for physicians at the point of care and patient bedside.

[Read More](#)

**SKU:** AM-GE-VENUE-50-2P-C



## MINDRAY MX7 ULTRASOUND SYSTEM - 2 PROBES

The MX7 Ultrasound System has been thoughtfully designed to overcome the obstacles clinicians face in today's challenging healthcare environments. With a customizable touchscreen and revolutionary, software-based beamformer technology, the MX7 System combines excellent image quality with an intuitive user experience to help ensure reliable and efficient diagnosis during the most challenging exams.

**Includes x2 Transducer of customers choice from [Product-Sheet-MX7-Transducer-Family](#)**

[Read More](#)

**SKU:** AM-MX7-2P



## GE VENUE R3 ULTRASOUND WITH 2 PROBES

The GE Venue R3 Point-of-Care Ultrasound System provides accurate and high-precision ultrasound imaging data of a patient. Venue is an AI-enabled primary care ultrasound system with precise tools that are designed to enable fast patient assessments and confident decisions. This system's robust design makes it suitable for patient monitoring in the hospital as well as in an office setting.

[Read More](#)

**SKU:** AM-GE-VENUE-R3-2P



## PHILIPS EPIQ 5G ULTRASOUND WITH 2 PROBES

The refurbished Philips Epiq 5 is a premium shared service ultrasound machine from Philips. It offers PureWave single crystal probes, superior ergonomics, and workflow, all in a compact and lightweight design. The Epiq 5 for sale replaces the older Philips iU22 and offers less probe options and features than the Epiq 7, which is higher priced. All Epiq and Affiniti ultrasound machines have a similar layout and use the same monitor and expansive tablet-like touchscreen for navigation.

[Read More](#)

**SKU:** AM-EPIQ-5G-2P



## GE LOGIQ E9 XD CLEAR

19" Hi-RES Flat Panel Display, Color Doppler, PW Doppler, M-Mode, Angio, Color Doppler, PW Doppler Anatomic M-Mode, Automatic Optimization, Tissue Harmonics, SRI-HD, CrossXBeam, Virtual Convex, AutoIMT B-Flow, VCI-Static, DICOM, LogiqView, Coded Contrast Imaging, Scan Assistant, OnBoard Reporting, Elastography.

[Read More](#)

**SKU:** AM-LOGIQ-E9-XDC-2P

## SAMSUNG HM70A VASCULAR PACKAGE (2 PROBES)



Samsung HM70A Vascular Package (2 Probes)

[Read More](#)

**SKU:** AM-HM70A-2P

---

## MINDRAY DP 50 ULTRASOUND W/ 2 PROBES



Mindray DP 50 Ultrasound w/ 2 Probes

[Read More](#)

**SKU:** AM-MR-DP50-2P



## MINDRAY MX7 ULTRASOUND SYSTEM

The MX7 Ultrasound System has been thoughtfully designed to overcome the obstacles clinicians face in today's challenging healthcare environments. With a customizable touchscreen and revolutionary, software-based beamformer technology, the MX7 System combines excellent image quality with an intuitive user experience to help ensure reliable and efficient diagnosis during the most challenging exams.

**Includes x1 Transducer of customers choice from [Product-Sheet-MX7-Transducer-Family](#)**

[Read More](#)

**SKU:** AM-MX7-1P



## GE LOGIQ P6 BT11 ULTRASOUND WITH 1 PROBE

The GE Logiq P6 provides a combination of performance, ergonomics and value to help meet a broad range of applications—including vascular, abdominal, small parts, OB/GYN and cardiac. It is a midrange ultrasound machine that looks similar to the lower priced Logiq P5 but adds many high-end features.

[Read More](#)

**SKU:** AM-GE-LOGIQ-P6-1P

## CHISON SONOBOOK 6 WITH 2 PROBES



The new Chison SonoBook 6 portable shared service ultrasound machine is a laptop-style ultrasound machine designed for the Point of Care market and mobile applications.

The SonoBook 6 is similar in image quality and features to the Chison EBit 50, but also has CW Doppler for cardiac imaging. Its design makes it more ideal for the bedside ultrasound market (Point of Care) with its solid alloy casing and smaller, lightweight design.

It has advanced features such as Compound Imaging, Speckle Reduction Imaging, SuperNeedle (Needle Visualization), Elastography, AutoIMT, Tissue Doppler, HIP Graph, and full DICOM with Structured Reporting. Its internal battery allows for up to 2 hours of scan time.

[Read More](#)

**SKU:** AM-CHISON-SB6-1P

## CHISON SONOBOOK 6



The new Chison SonoBook 6 portable shared service ultrasound machine is a laptop-style ultrasound machine designed for the Point of Care market and mobile applications.

The SonoBook 6 is similar in image quality and features to the Chison EBit 50, but also has CW Doppler for cardiac imaging. Its design makes it more ideal for the bedside ultrasound market (Point of Care) with its solid alloy casing and smaller, lightweight design.

It has advanced features such as Compound Imaging, Speckle Reduction Imaging, SuperNeedle (Needle Visualization), Elastography, AutoIMT, Tissue Doppler, HIP Graph, and full DICOM with Structured Reporting. Its internal battery allows for up to 2 hours of scan time.

[Read More](#)

**SKU:** AM-CHISON-SB6-2P

## CHISON SONOTOUCH 30



Chison SonoTouch 30 is a popular tablet-style portable ultrasound machine designed for bedside/point-of-care and other situations that demand excellent mobility, ease-of-use, and versatility. The SonoTouch 30 runs a full range of applications and has measurement and analysis packages for a wide variety of applications, as well as presets for those applications.

The new SonoTouch 30 is a unique ultrasound tablet because it has PW and Color Doppler, and it can operate completely by touch, or by the attached stylus. This makes it quite different than many other affordable tablet-style ultrasound machines.

[Read More](#)

**SKU:** AM-CHISON-ST30-3P

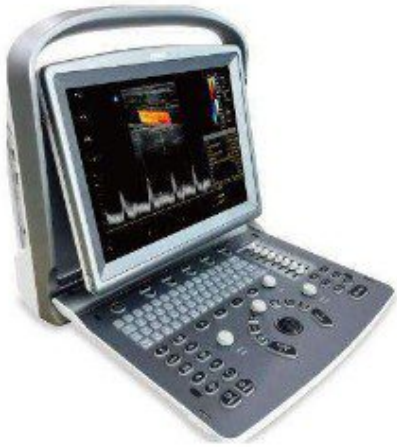
## SONOSITE S-NERVE WITH PROBE AND PRINTER



The Sonosite S Series ultrasound machines were the industry's first mountable ultrasound. They offer a zero footprint and can be mounted on a wall, the ceiling, or a stand.

[Read More](#)

**SKU:** AM-SONO-SN-1P



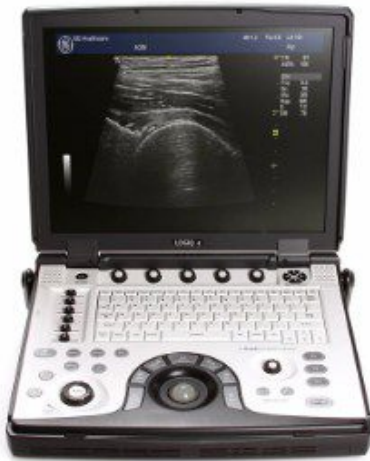
## CHISON ECO6

The new Chison ECO6 ultrasound machine finds itself as the top machine in the "low cost" market for new portable ultrasounds.

Continuing in the low-cost ECO line of products, Chison looked to improve upon its popular brand by creating a machine that's a little more competitive with the mid-range systems. With Speckle Reduction, Needle Visualization, AutoIMT, Compound Imaging, Harmonics, and solid image quality, this economical ultrasound machine packs a powerful performance for a great price.

[Read More](#)

**SKU:** AM-CHISON-ECO6-1P



## GE LOGIQ E WITH 2 PROBES, ABDOMINAL AND, PRINTER AND CART

The GE Logiq E is one of the most popular portable ultrasound systems for sale. It holds this honor for a few reasons: Price, Performance, and Capability. A refurbished GE Logiq E has always been an affordable solution for a quality, feature-laden portable ultrasound machine. It has true Shared Services capabilities and is essentially the only portable ultrasound in its class/price range that has truly good image quality across all applications.

[Read More](#)

**SKU:** AM-LOGIC-E-OB/GYN

## SONOSITE M TURBO



Our most versatile system for abdominal, nerve, vascular, cardiac, venous access, pelvic, and superficial imaging. The M-Turbo® ultrasound system gives you striking image quality with sharp contrast resolution and clear tissue delineation. This ultrasound equipment lets you visualize detail, improving your ability to differentiate structures, vessels and pathology.

[Read More](#)

**SKU:** AM-SONO-MTURBO

## SONOSITE TITAN



The SonoSite Titan portable ultrasound machine is an excellent low-cost, durable, color Doppler ultrasound machine. Only available as a used ultrasound machine, the Titan remains a solid choice for those seeking a good portable ultrasound machine with Doppler capabilities.

[Read More](#)

**SKU:** AM-SSTR



## GE VIVID Q PORTABLE ULTRASOUND W/ CART AND CARDIAC PROBE

The GE Vivid Q portable cardiac ultrasound system is GE's top-of-the-line premium portable cardiac ultrasound machine. It features many of the high-end technologies found in the GE Vivid 7 and GE Vivid e9 console-based machines that are not found on the GE Vivid i ultrasound machine, specifically the M4S-RS, and Automated Ejection-Fraction Calculation.

Download the GE-vidid-series  
Transducer Guide

[Read More](#)

**SKU:** AM-VIVID-Q-C



## ALOKA ALPHA 5

The ProSound Alpha 5 is Aloka's latest advance in digital diagnostic ultrasound for the operating room. Aloka's ProSound technology transmits and receives noise-free signals providing diagnostic information in a pure sound field.

[Read More](#)

**SKU:** AM-ALOKA-ALPHA-5



## GE LOGIQ P5 ULTRASOUND SYSTEM

The GE Logiq P5 is an economical shared service ultrasound machine that is unique in its price range by offering deep support for all applications from Cardiac to Pediatric, from 4D Obstetrics to Surgical or Elastography with an astounding 29 compatible transducers spread across every possible application. If it can be done with ultrasound, the Logiq P5 can do it.

[Read More](#)

**SKU:** N/A



## TOSHIBA APLIO 500 CV ULTRASOUND IMAGING SYSTEM

Every patient is unique, many are challenging. Aplio 500 delivers outstanding performance for superior clinical precision, diagnostic confidence and departmental productivity. Crystal clear images consistently across a wide variety of clinical specialties and an abundance of expert tools ensure you can always get your diagnostic answer quickly and reliably “ from early detection to treatment and follow up.

[Read More](#)

**SKU:** AM-TA-APLIO500CV



## CHISON EBIT 50 ULTRASOUND WITH 18MHZ PROBE

The EBit 50 features the excellent image quality and all the great features of the EBit 60, but at a lower price. It is ideal for those performing studies not requiring CW Doppler. It brings image quality usually seen on more expensive ultrasound machines at a very competitive price. It also includes an extended multi-year warranty when purchased new.

[Read More](#)

**SKU:** AM-CHISON-EBIT-1P



## GE LOGIQ P9 ULTRASOUND W/ MATRIX PROBE

Introducing the LOGIQ P9 ultrasound system from GE Healthcare a general imaging system designed for quick diagnostic exploration and full schedules. Whether the need is immediate triage or a comprehensive exam, you can rely on the budget friendly LOGIQ P9 system to provide the consistent image quality, comprehensive application coverage, and ease of use that enable clinicians to make timely, confident decisions.

[Read More](#)

**SKU:** AM-LOGIQ-P9-1P

## GE VIVID I BT12



The GE Vivid-I is a midrange portable ultrasound machine for cardiovascular applications. It has many powerful cardiovascular features that are unusual at this price point including both an adult and pediatric TEE probes.

Download the GE-vivid-series  
Transducer Guide

[Read More](#)

**SKU:** AM-VIVID-I-BT12

## SONOSCAPE A6



The SonoScape A6 portable ultrasound machine is among the best imaging black and white portable ultrasound machines for sale. The PC based computer technology and the reliable Linux operating system enable the SonoScape B/W ultrasound system to be more stable and flexible for operation.

[Read More](#)

**SKU:** AM-SONOSCAPE-A6



## EDAN ACCLARIX AX8

The Acclarix AX8 ultrasound system is a fully featured portable diagnostic ultrasound platform designed from the ground up with a relentless focus on delivering unexpected levels of innovation and performance. Born of a vision to deliver meaningful innovations that solve real clinical challenges the Acclarix AX8 features a distinctive design, definitive image quality, intelligent workflow and intrinsic quality.

[Read More](#)

**SKU:** AM-AX8



## SAMSUNG PT60A

This groundbreaking ultrasound system is uniquely engineered to meet the needs of the portable market and incorporates new features such as a 10.1 inch LED touch-screen and NeedleMate technology. With it's premium performance, slim and compact size and ease of use, the PT60A is designed to satisfy all Point of Care Applications.

[Read More](#)

**SKU:** AM-SAM-PT60A



## PHILIPS IU-22 ULTRASOUND WITH TWO PROBES

In the Philips IU22 ultrasound system, Philips uses volume imaging and the ViewForum workstation to view ultrasound in the same format as CT and MR. Exam times are reduced by as much as 38 percent while using the Philips IU22 ultrasound. The Philips IU22 model offers tissue aberration correction on breast transducers, body contrast-enhanced ultrasound for more definitive diagnosis, and exam time reduction with SmartExam.

[Read More](#)

**SKU:** AM-PH-IU-22



## KONICA MINOLTA SONIMAGE HS1 ULTRASOUND

From the clinic to the bedside, the SONIMAGE HS1 delivers the superior image quality and needle visualization required for confident patient care decisions across a variety of MSK environments: orthopedics, sports medicine, physical medicine, and pain management.

[Read More](#)

**SKU:** AM-KM-SONIMAGE-HS1

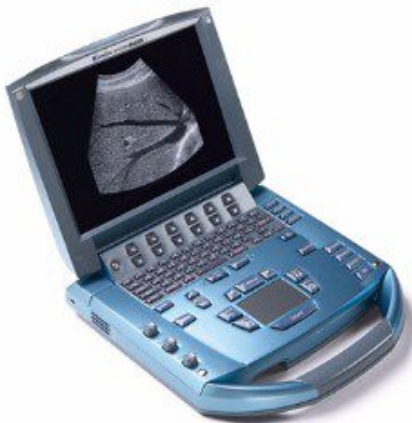


## GE VOLUSON E6 ULTRASOUND SYSTEM WITH HD LIVE OB/GYN PACKAGE

In keeping with GE's commitment to delivering quality ultrasound equipment, the GE Voluson E6 is one of the best 4D gynecological ultrasound machines on the market, combining advanced probe technology with innovative hardware and software architecture to yield exceptional image quality.

[Read More](#)

**SKU:** AM-GE-VOLUSON-E6-HDL-OB/GYN



## SONOSITE MICROMAXX ULTRASOUND

The SonoSite MicroMaxx remains one of our top choices for portable ultrasounds, offering the image quality and portability necessary for a range of applications, from standard point-of-care to emergency. In terms of the SonoSite MicroMaxx price, this portable ultrasound is also one of the least expensive, yet easy and reliable solutions.

[Read More](#)

**SKU:** AM-SONOMMAXX



## KONICA MINOLTA SONIMAGE P3 HANDHELD ULTRASOUND AND PROBE

The SONIMAGE™ P3 is a true portable ultrasound machine that gives clinicians the ability to do more for patients where and when they need it most - at the point-of-care. With its small footprint and weighing less than a pound, this handheld device can accelerate and improve interventions and decision making time.

[Read More](#)

**SKU:** AM-KM-SONIMAGE-P3



## SONOSITE 180 PLUS WITH VAGINAL AND ABDOMINAL CURVED TRANSDUCER

The Sonosite 180 Plus ultrasound machine is an extremely convenient scanning system. With a handle on one end, this machine is literally a hand-held ultrasound machine. But, there is a lot of power packed into that little machine.

[Read More](#)

**SKU:** AM-SONO180-P

## ALOKA PROSOUND ALPHA 10



The ProSound Alpha 10 ultrasound system from Aloka provides technicians with an ideal imaging device to fit the diagnostic needs of large clinical practices and hospitals. Useful across a large range of applications, the Aloka ProSound Alpha 10 ultrasound unit provides users with fast and accurate imaging. The Aloka ProSound Alpha 10 ultrasound machine uses beam control to provide high resolution, ergonomic design, a 12 Bit A/D digital beam converter, and above standard imaging processing channels to provide the most ideal imaging capability.

[Read More](#)

**SKU:** AM-ALOKA-PS-ALPHA10



## CHATTANOOGA MEDICAL 2 CHANNEL COMBINATION UNIT

Intelect® is a name the clinical rehabilitation community relies on. The Intelect Legend Stimulator, Combination and Ultrasound units are well known for their exceptional clinical performance, durability, and ease of use.

[Read More](#)

**SKU:** AM-CHAT-INTCB



## GE LOGIQ E9 XDCLEAR

The LOGIQ E9 with XDclear is a powerful and versatile general imaging system that helps meet a wide variety of general imaging needs. With its intuitive, advanced capabilities, the LOGIQ E9 with XDclear allows you to make every day extraordinary.

[Read More](#)

**SKU:** N/A



## CHISON ECO3

The Chison ECO3 black and white portable ultrasound machine is one of the few non-color systems to have Pulsed Wave Doppler. This makes it very unique in its category and price range. Advanced imaging technologies, including compound imaging, speckle reduction, and harmonics give the Chison ECO3 an edge in the portable black-and-white ultrasounds at a very inexpensive price.

[Read More](#)

**SKU:** AM-CHISON-ECO3-2P

## SONOSCAPE A6 WITH BIPLANE TRANSDUCER



The PC based computer technology and the reliable Linux operating system enable the SonoScape B/W ultrasound system to be more stable and flexible for operation. The value of the system can be promoted by the maintenance and upgrading of the software.

[Read More](#)

**SKU:** AM-SONOSCAPE-A6-BP



## GE VIVID S6 ULTRASOUND CARDIOLOGY PACKAGE W/ 3 TRANSDUCERS

The Vivid S6 is a multifunction system that is at home in the exam room or the operating room. It's shared-service capabilities allow it perform vascular, abdominal, pediatric/fetal, OB, and OR applications. With ultra-high frame rates, dual focus, Speckle Reduction imaging, and Coded Phased Inversion Harmonics the Vivid S6 simplifies image acquisition while enhancing image quality.

Download the GE-vivid-series  
Transducer Guide

[Read More](#)

**SKU:** AM-VIVID-S6-C



## BK MEDICAL FALCON

The Falcon 2101 EXL's high image quality and versatility makes it useful for a variety of applications. With features like intuitive interface and user-defined settings, the Falcon optimizes your imaging conditions as well as the use of your time. The sleek, compact and mobile design provides ultrasound where you need it, precisely when you need it. And, it is equipped with the right tools: a comprehensive collection of transducers with corresponding puncture and biopsy equipment.

[Download Brochure](#)

[Read More](#)

**SKU:** AM-BK-FAL-2101-1-1P



## SAMSUNG ACCUVIX A30 ULTRASOUND

Samsung's Accuvix A30 Ultrasound System establishes a benchmark for imaging. Offering features such as the proprietary EZ Exam and ElastoScan, this system facilitates clinical decision-making and boosts diagnostic confidence. Its 21.5-inch large screen LED monitor combines with enriched 3D performance to deliver uncompromising image quality for increased detection rates.

[Download Brochure](#)

[Read More](#)

**SKU:** N/A



## PHILIPS IE33 ULTRASOUND

Keeping pace with the clinical needs of managing patients with cardiac disease, such as heart failure, valvular and coronary artery disease, and congenital heart disease, calls for exceptional levels of image quality, quantification and clinical performance. The iE33 intelligent echo system is addressing this growing requirement with complementary 2D and Live 3D imaging, quantification tools, and connected work solutions that help you answer the major questions related to cardiac disease management: structure, efficiency, size, and function.

[Download Brochure](#)  
[Read More](#)

**SKU:** AM-PH-IE-33



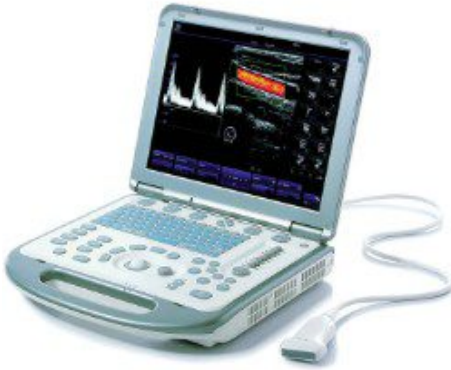
## PHILIPS HD11 XE ULTRASOUND

The Philips HD11 XE ultrasound machine has gone above and beyond the features offered from the HD11, with the same capabilities and more. Such features include the stress echo option, anatomical M-mode, and Tissue Doppler Imaging (TDI). The HD11 XE's SonoCT technology has been clinically tested to provide superior images. The versatile Philips HD11XE is ideal for many settings such as hospitals, satellite clinics, and special practices.

[Download Brochure](#)  
[Read More](#)

**SKU:** N/A

## MINDRAY M5 ULTRASOUND



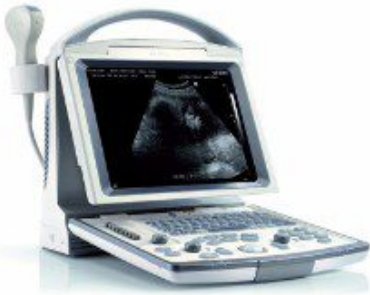
The M5 Ultrasound delivers a full range of functionality in a portable, laptop sized package. Weighing about 13 pounds, the Mindray M5 Ultrasound system is capable of producing brilliant 1D color images with enhanced contrast and spatial resolution through tissue harmonic imaging. Thanks to its easy format, the Mindray M5 can be easily transported and can provide a wide range of application services to meet more medical occasions including in the operating room, out in the field, in ambulances, etc.

[Download Brochure](#)

[Read More](#)

**SKU:** N/A

## MINDRAY DP-50 ULTRASOUND



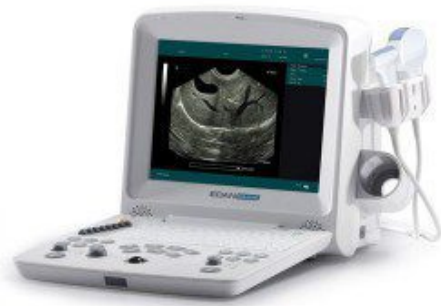
Purified Harmonic Imaging for better contrast resolution providing clearer images with excellent resolution and less noise. iBeam permits use of multiple scanned angles to form a single image, resulting in enhanced contrast resolution and improved visualization. iClear., allows you to gain improved image quality based on auto structure detection

[Download Brochure](#)

[Read More](#)

**SKU:** AM-MR-DP50-1P

## EDAN DUS 60 VET



The DUS 60 (2013) VET is an impressive new compact ultrasound system providing superb value and best-in-class quality across a wide range of veterinary applications. With the added support of pulsed wave Doppler imaging, the DUS 60 VET meets higher diagnostic requirements.

[Download Brochure](#)

[Read More](#)

**SKU:** N/A

## GE LOGIQ E



The GE Logiq e is one of the most popular portable ultrasound systems for sale. It holds this honor for a few reasons: Price, Performance, and Capability. A refurbished GE Logiq e has always been an affordable solution for a quality, feature-laden portable ultrasound machine. It has true Shared Services capabilities and is essentially the only portable ultrasound in its class/price range that has truly good image quality across all applications. Also benefitting the GE Logiq e is that it's extensively customizable. It allows you to adjust all aspects of the image quality, annotations, presets, programmable buttons, etc. For these reasons it remains a very popular portable ultrasound solution. The GE Logiq e is also fully digital and allows for export to external hard drive, network, flash drive, and DVD. Probes are included.

[Download Brochure](#)

[Read More](#)

**SKU:** AM-LOGIQ-E-1P



## GE LOGIQ BOOK XP

The GE LOGIQ Book XP Enhanced Ultrasound machine combines portable capabilities with quality ultrasound technology. Designed with user ease and confidence in mind, The GE LOGIQ Book XP Enhanced Ultrasound allows technicians to make confident decisions regarding patient care. This ultrasound machine is full of quality features including an easy to use interface with one touch image optimization, a streamlined workflow, an ergonomic design, phased array technology, and more.

[Read More](#)

**SKU:** AM-LOGIQBOOKXP-1P

# INDEX

## A

Aloka Alpha 5 32  
Aloka ProSound Alpha 10 40

## B

BK Medical Falcon 43

## C

Chattanooga Medical 2 Channel Combination Unit 40  
Chison EBIT 50 Ultrasound with 18mhz Probe 34  
Chison ECO3 41  
Chison ECO6 30  
Chison SonoAir 70 with one Standard Transducer and Trolley 5  
Chison Sonobook 6 28  
Chison Sonobook 6 with 2 probes 28  
Chison Sonotouch 30 29  
Codonics 810-DVB DirectVista Blue Film 8x10 500 sheets 8  
Codonics Horizon GS Multi-Media Image Printer 8

## E

Edan Acclarix AX8 36  
Edan DUS 60 B&W Digital Ultrasound 3  
Edan DUS 60 VET 46  
Edan U50 Prime Ultrasound 2

## G

GE Logiq Book XP 47  
GE Logiq e 46  
GE Logiq E with 2 Probes, Abdominal and, Printer and Cart 30  
GE Logiq E9 XD Clear 25  
GE Logiq E9 XDClear 41  
GE Logiq P5 Ultrasound System 33  
GE Logiq P6 BT11 Ultrasound with 1 Probe 27  
GE Logiq P9 Ultrasound w/ Matrix Probe 34  
GE Logiq S8 R2 w/ 2 Probe of Customers Choice 18  
GE Venue 50 with 2 Probes and Cart 23  
GE Venue FIT R4 with 2 Probes and Roll Stand 20  
GE Venue GO Ultrasound with 2 probes and Cart 22  
GE Venue R3 Ultrasound with 2 probes 24  
GE VIVID E9 XD Clear 2 Probes Customers Choice 16  
GE Vivid I BT12 35  
GE VIVID Q Portable Ultrasound w/ Cart and Cardiac Probe 32  
GE VIVID S6 Ultrasound Cardiology Package w/ 3 transducers 42  
GE Voluson E10 BT16 Ultrasound System OB/GYN Package 19  
GE Voluson E6 BT13 Ultrasound System OB/GYN Package 19  
GE Voluson E6 Ultrasound System with HD Live OB/GYN Package 38  
GE Voluson E8 BT16 Ultrasound System OB/GYN Package 3

## **K**

Konica Minolta Sonimage HS1 Ultrasound 37  
Konica Minolta Sonimage P3 Handheld Ultrasound and Probe 39

## **M**

Mindray DP 50 Ultrasound w/ 2 Probes 26  
Mindray DP-50 Expert Ultrasound with 1 Probe 12  
Mindray DP-50 Expert Ultrasound with 2 Probes 11  
Mindray DP-50 Ultrasound 45  
Mindray M5 Ultrasound 45  
Mindray MX7 Ultrasound Cart Only 12  
Mindray MX7 Ultrasound System 27  
Mindray MX7 Ultrasound System - 2 Probes 24  
Mindray MX7 Ultrasound System - 3 Probes 13  
Mindray TE5 Ultrasound (with 1 Probe) 4  
Mindray TE5 Ultrasound (with 2 Probes) 6  
Mindray Zonare S3 Ultrasound 14

## **P**

Philips 70 G Ultrasound with 2 Probes of customer's choice 17  
Philips Epiq 5G Ultrasound with 2 probes 25  
Philips Epiq 7C Ultrasound with 2 probes 15  
Philips HD11 XE Ultrasound 44  
Philips iE33 Ultrasound 44  
Philips IU-22 Ultrasound with two probes 37

## **S**

Samsung Accuvix A30 Ultrasound 43  
Samsung HM70A Vascular Package (2 Probes) 26  
Samsung PT60A 36  
Siemens 9L4 Linear Array Transducer 2  
Siemens ACUSON DAX Probe 10  
Siemens ACUSON Sequoia Ultrasound System 10  
Sonoscape A6 35  
SonoScape A6 with Biplane Transducer 42  
Sonosite 180 Plus with Vaginal and Abdominal Curved Transducer 39  
Sonosite M Turbo 31  
Sonosite Micromaxx Ultrasound 38  
Sonosite S II Ultrasound with stand and 2 probes 20  
SonoSite S Series Ultrasound System 2 Probes and Stand 21  
Sonosite S-ICU w/ Probe and Stand 14  
Sonosite S-Nerve With Probe and Printer 29  
Sonosite Titan 31  
Sony UPP210HD Equivalent thermal paper [ULSTAR-2100HD] (5 rolls/box) 9  
Sony Wireless Print System UPA-WU10 9

## **T**

Toshiba APLIO 500 CV ultrasound Imaging System 33