



auxoMEDICAL

**New &
Refurbished**

Medical
Equipment

Product
Catalog

2019

-

2020

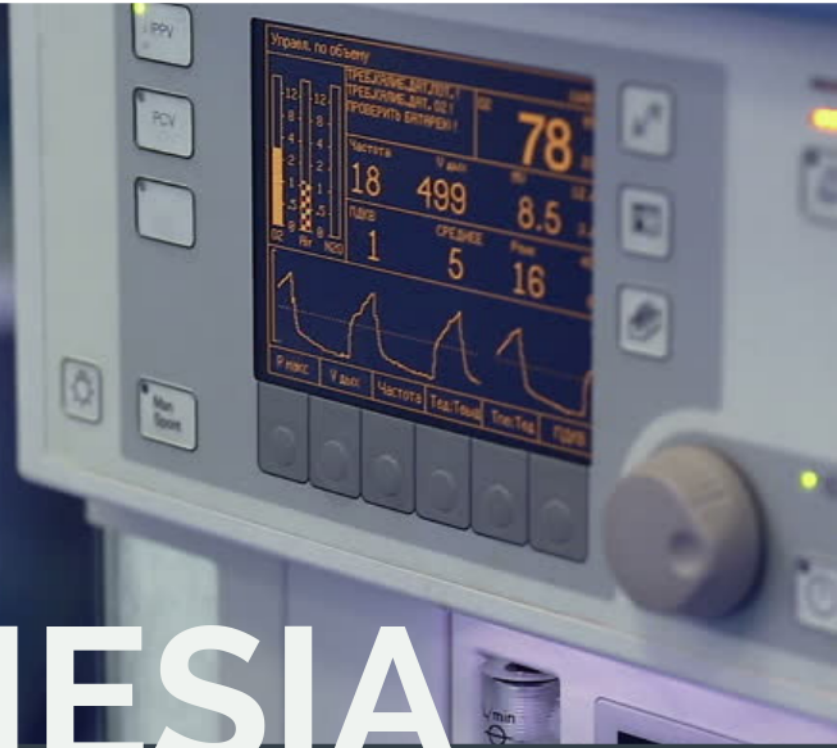


Ultrasound Machines

Order Now! Call 1-888-728-8448 Online www.auxomedical.com

We are pleased to announce that we can now service, repair and maintain your **anesthesia equipment!**

We are happy to provide you with solutions to best support your needs regardless of if they are biomedical, sterilization and now anesthesia.



ANESTHESIA

Biomedical & Sterile Processing

At Auxo Medical, we're always looking to expand our service and preventative maintenance capabilities to better serve you and keep your patients safe.

Biomedical Equipment

We provide a full line of Biomedical preventative maintenance, repairs, and calibrations onsite to keep you operating under NFPA99 standards and AAMI recommendations.

Sterile Processing

Our Specialty is sterilization and keeping your facility operating under joint commission standards.

We offer a variety of preventative maintenance programs that keeps your capital equipment running with little to zero down time.

We have the expertise to provide the equipment you need, the reliability to build a lasting relationship, and the responsiveness and services you need and expect.



auxoMEDICAL

5401 Distributor Drive, Richmond VA 23225

Toll Free: 888-728-8448 | Local: 804-233-4424 | Fax: 804-233-4204

Sales: sales@auxomedical.com | Support: support@auxomedical.com

Table of Contents

Ultrasound Machines..... 1-11



auxoMEDICAL

2019-2020 CATALOG

**This catalog is
a list of our
most popular
equipment.**

**Please contact
us for a
comprehensive
list of all
products.**

New & Refurbished
Medical Equipment

Order Now! Call 1-888-728-8448 Online www.auxomedical.com

Aloka Alpha 5

The ProSound Alpha 5 is Aloka's latest advance in digital diagnostic ultrasound for the operating room. Aloka's ProSound technology transmits and receives noise-free signals providing diagnostic information in a pure sound field.

Features:

- Microspatial Compounding (for a more densely rich image)
- Pixel-Focus (for sharp detail in both near and far fields)
- iDMS (for hassle free image storage and retrieval)
- Works with Aloka's wide variety of surgical specialty transducers
- Unparalleled Image Quality
- Pure Sound Transmission - superior penetration and exceptional resolution
- Pixel Focus



Condition	Refurbished
-----------	-------------

Aloka ProSound Alpha 10

The ProSound Alpha 10 ultrasound system from Aloka provides technicians with an ideal imaging device to fit the diagnostic needs of large clinical practices and hospitals. Useful across a large range of applications, the Aloka ProSound Alpha 10 ultrasound unit provides users with fast and accurate imaging. The Aloka ProSound Alpha 10 ultrasound machine uses beam control to provide high resolution, ergonomic design, a 12 Bit A/D digital beam converter, and above standard imaging processing channels to provide the most ideal imaging capability.



Features:

- Dual Dynamic Display
- Extended Flow Technology for blood flow definition
- Power, Color, and Spectral Doppler
- Duplex and triplex imaging capabilities
- High resolution imaging with ultimate compounding technologies
- Standard Brachytherapy seed placement grids
- User-defined measurement charts and reporting capabilities
- Large selection of probes with Multi-frequency, Hemispheric Sound Technology, and Definitive Tissue Harmonic Echo, pure sound transmission

Condition	Refurbished
-----------	-------------

BK Medical Falcon

The Falcon 2101 EXL's high image quality and versatility makes it useful for a variety of applications. With features like intuitive interface and user-defined settings, the Falcon optimizes your imaging conditions as well as the use of your time. The sleek, compact and mobile design provides ultrasound where you need it, precisely when you need it. And, it is equipped with the right tools: a comprehensive collection of transducers with corresponding puncture and biopsy equipment.



Features:

- Frequency range of 1-20 MHz provides the highest resolution in its class.
- Four transducer connectors (three array and one mechanical).
- B-K Medical's patented Continuous Uniform Focusing technology ensures optimal resolution at all image depths.
- Compact and mobile, so it can be used wherever and whenever you need it.
- Ergonomic, with height-adjustable keyboard and monitor and logically grouped controls.
- Full 15" flicker-free monitor provides optimum viewing.
- Optional fully integrated 3-D package, including tracked pullback support for relevant transducers.

Condition	Refurbished
-----------	-------------

Chattanooga Medical 2 Channel Combination Unit

Intelect® is a name the clinical rehabilitation community relies on. The Intelect Legend Stimulator, Combination and Ultrasound units are well known for their exceptional clinical performance, durability, and ease of use.

Features:

- Two Channel Combination System
- Four Waveforms (Interferential, Premodulated, High Volt and Russian)
- Ergonomic applicators
- Electronic Signature
- 1 and 3.3 MHz
- 10%, 20%, 50% and Continuous Duty Cycle
- Warranty: 1 year



Condition	New
-----------	-----

Chison EBIT 50 Ultrasound with 18mhz Probe

The EBit 50 features the excellent image quality and all the great features of the EBit 60, but at a lower price. It is ideal for those performing studies not requiring CW Doppler. It brings image quality usually seen on more expensive ultrasound machines at a very competitive price. It also includes an extended multi-year warranty when purchased new.

Features:

- Compound Imaging
- Speckle Reduction Imaging
- IMT
- Needle Visualization Software
- 15" LED wide-viewing angle monitor
- Elastography
- PW/Color/Power Doppler
- USB Export to DICOM and PC formats
- DICOM Structured Reporting
- Auto Image Optimization
- DVI, S-Video, BNC Composite, and VGA Video out

Condition	New
-----------	-----



Chison ECO6

The new Chison ECO6 ultrasound machine finds itself as the top machine in the "low cost" market for new portable ultrasounds.

Continuing in the low-cost ECO line of products, Chison looked to improve upon its popular brand by creating a machine that's a little more competitive with the mid-range systems. With Speckle Reduction, Needle Visualization, AutoIMT, Compound Imaging, Harmonics, and solid image quality, this economical ultrasound machine packs a powerful performance for a great price.

In comparison to its predecessor, the Chison ECO5, our tests show the ECO6 to have better image quality and adds Triplex, Color Power Doppler, B-Steer, and the aforementioned AutoIMT and Needle Visualization technologies.

Its 12-inch LED monitor is clear, crisp and has a much wider viewing angle than the LCDs you find on other ultrasound machines in this price range.

Additionally, we feel the color on the ECO6 is an improvement over the ECO5, which allows this to be a decent low-end color system.

Features:

- 30" rotatable LED screen
- B, C, DPD, CPA, D, M
- Streamlined workflow (6-one-key-step)
- Support Triplex, B Steer, Super Needle
- Cardiac Application: Phased array probe
- Compound Imaging, SRA, THI
- 2D Steer, Super needle
- Triplex, Automatic PW trace
- Solutions for accessories: Carry case (BG-100) & Cart TR 9000 and anti-water keyboard cover

Condition	New
-----------	-----



Chison ECO3

The Chison ECO3 black and white portable ultrasound machine is one of the few non-color systems to have Pulsed Wave Doppler. This makes it very unique in its category and price range. Advanced imaging technologies, including compound imaging, speckle reduction, and harmonics give the Chison ECO3 an edge in the portable black-and-white ultrasounds at a very inexpensive price.

Features:

- Compound Imaging
- Speckle Reduction Imaging
- Tissue Harmonics
- 12-inch LED wide-angle display
- Built-in Battery
- 320GB Hard Drive (minimum)
- DICOM 3 compatible
- Linear probe up to 11MHz
- VGA Video port
- 3 USB connectors
- Dual Probe Port

Condition	New
-----------	-----



Did you know that we provide **maintenance and service** for every piece of equipment listed in this catalog?

Chison SonoBook 6

The new Chison SonoBook 6 portable shared service ultrasound machine is a laptop-style ultrasound machine designed for the Point of Care market and mobile applications.



The SonoBook 6 is similar in image quality and features to the Chison EBit 50, but also has CW Doppler for cardiac imaging. Its design makes it more ideal for the bedside ultrasound market (Point of Care) with its solid alloy casing and smaller, lightweight design.

It has advanced features such as Compound Imaging, Speckle Reduction Imaging, SuperNeedle (Needle Visualization), Elastography, AutoIMT, Tissue Doppler, HIP Graph, and full DICOM with Structured Reporting. Its internal battery allows for up to 2 hours of scan time.

Features: Imaging Modes 2D Applications Emergency Medicine, Anesthesia, Breast, Small Parts, Superficial, Musculoskeletal, OB/GYN, Abdominal, General Imaging, Vascular, Pediatrics Features Auto Optimization, Color Doppler, AutoIMT, Compound Imaging, DICOM, IMT, M-Mode, Power Doppler, PW Doppler, Speckle Reduction, Tissue Harmonics Year Built 2018-Current Video and Output Options USB, Ethernet, DVI, S-Video Monitor Array Touchscreen N/A Dimensions 12 lbs, 14" x 14" x 3" Export Options USB, BMP, JPG, AVI, Network Storage, DICOM USB Ports 2 DICOM Options Store, Print, Worklist, MPPS, Structured Reports PC Export Formats BMP, JPG, AVI CD/DVD-R N/A Ethernet Yes Wireless Yes Power (USA) 100-240V, 50/60 Hz Battery Yes Trackball/Trackpad Trackball HDD Size 320GB SSD/HDD HDD Max Cine Memory 256 Frames Maximum Depth (cm) 30

Condition	New
-----------	-----

Chison SonoTouch 30

Chison SonoTouch 30 is a popular tablet-style portable ultrasound machine designed for bedside/point-of-care and other situations that demand excellent mobility, ease-of-use, and versatility. The SonoTouch 30 runs a full range of applications and has measurement and analysis packages for a wide variety of applications, as well as presets for those applications.



The new SonoTouch 30 is a unique ultrasound tablet because it has PW and Color Doppler, and it can operate completely by touch, or by the attached stylus. This makes it quite different than many other affordable tablet-style ultrasound machines.

Condition	New
-----------	-----

Edan Acclarix AX8

The Acclarix AX8 ultrasound system is a fully featured portable diagnostic ultrasound platform designed from the ground up with a relentless focus on delivering unexpected levels of innovation and performance. Born of a vision to deliver meaningful innovations that solve real clinical challenges the Acclarix AX8 features a distinctive design, definitive image quality, intelligent workflow and intrinsic quality.



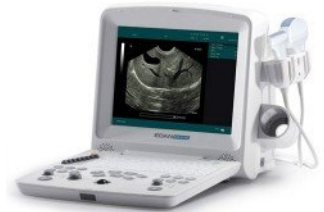
Features:

- Sleek, compact design facilitates portability for use in any care environment.
- 15" HD LCD
- Fully sealed control panel
- Removable lithium ion battery with dual touch sensors to rapidly check battery level.
- A comprehensive suite of transducers
- Advanced image optimization technologies, including speckle reduction and spatial compounding technologies.
- High fidelity, high channel count system architecture.
- Tissue Adaptive Imaging

Condition	New
-----------	-----

Edan DUS 60 VET

The DUS 60 (2013) VET is an impressive new compact ultrasound system providing superb value and best-in-class quality across a wide range of veterinary applications. With the added support of pulsed wave Doppler imaging, the DUS 60 VET meets higher diagnostic requirements. Features:



- Multi-purpose for abdomen, OB, GYN, Urology, Small parts and biopsy
- Digital Beam former
- Two transducer connectors
- Multi-frequency transducer series, fulfill different applications
- Maximum frequency up to 10MHz
- 12.1" LCD monitor
- USB ports support storage, transferring and printing
- THI (Tissue Harmonic Imaging)
- TSI (Tissue Specific Imaging)
- PW imaging
- Lithium rechargeable battery (Optional)

Condition	New
-----------	-----

GE Logiq Book XP

The GE LOGIQ Book XP Enhanced Ultrasound machine combines portable capabilities with quality ultrasound technology. Designed with user ease and confidence in mind, The GE LOGIQ Book XP Enhanced Ultrasound allows technicians to make confident decisions regarding patient care. This ultrasound machine is full of quality features including an easy to use interface with one touch image optimization, a streamlined workflow, an ergonomic design, phased array technology, and more.



Refurbished GE LOGIQ Book XP Enhanced Features:

- One touch image optimization with an easy to use interface
- Streamlined clinical workflow
- Advanced cardiac imaging, and emergency medicine applications
- Simultaneous Color Doppler, B-Mode, and Spectral Doppler display
- Power Doppler
- Virtual Convex
- Phased Array
- Split Screen side by side imaging
- 3D

Dimensions & Weight

- Height: 2.49 in (console), 3.12 in (with handle)
- Width: 13.88 in
- Depth: 11.71 in
- Weight: 10.1 lb

Electrical Specifications

- Voltage: 100-240 V AC
- Frequency: 60/60 Hz
- Power: Max. 130 VA with Peripherals

Console Design Details

- Laptop style
- Integrated HDD (40 GB)
- Wireless LAN Support
- USB ECG (AHA/IEC) (optional) support
- CWD (Optional) Support
- 1 probe port with micro-connector
- Rear handle

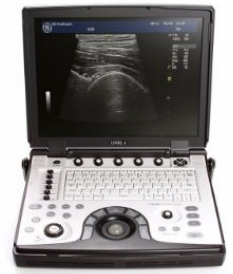
User Interface

- Operator Keyboard
- Alphanumeric keyboard
- Ergonomically designed hard key operations
- Integrated recording keys for remote control of peripherals and DICOM devices
- 6 TGC pods with remapping functionality
- Backlight keys

Condition	Refurbished
-----------	-------------

GE Logiq E with 2 Probes, Abdominal and, Printer and Cart

The GE Logiq E is one of the most popular portable ultrasound systems for sale. It holds this honor for a few reasons: Price, Performance, and Capability. A refurbished GE Logiq E has always been an affordable solution for a quality, feature-laden portable ultrasound machine. It has true Shared Services capabilities and is essentially the only portable ultrasound in its class/price range that has truly good image quality across all applications.



Features:

- Anatomical M-Mode
- 15 High-Resolution Color LCD Screen
- Auto Tissue Optimization (ATO)
- Auto CFM Optimization (ACO)
- Auto Spectrum Optimization (ASO)
- Adaptive Color Enhancement (ACE)
- TruScan Architecture (TruAccess, SmartScan, ComfortScan)
- External USB DVD-RW Drive 2 probes, abdominal, printer and cart

Condition	Refurbished
-----------	-------------

GE Logiq e

The GE Logiq e is one of the most popular portable ultrasound systems for sale. It holds this honor for a few reasons: Price, Performance, and Capability. A refurbished GE Logiq e has always been an affordable solution for a quality, feature-laden portable ultrasound machine. It has true Shared Services capabilities and is essentially the only portable ultrasound in its class/price range that has truly good image quality across all applications. Also benefitting the GE Logiq e is that it's extensively customizable. It allows you to adjust all aspects of the image quality, annotations, presets, programmable buttons, etc. For these reasons it remains a very popular portable ultrasound solution. The GE Logiq e is also fully digital and allows for export to external hard drive, network, flash drive, and DVD. Probes are included.



Condition	Refurbished
-----------	-------------

Condition	Refurbished
-----------	-------------

Did you know that we provide **maintenance and service** for every piece of equipment listed in this catalog?

GE Logiq E9 XDclear

The LOGIQ E9 with XDclear is a powerful and versatile general imaging system that helps meet a wide variety of general imaging needs. With its intuitive, advanced capabilities, the LOGIQ E9 with XDclear allows you to make every day extraordinary.

Features:

- Deliver extraordinary image quality on a broad spectrum of patient body types
- Visualize blood flow without the limitations of Doppler
- Enhance your workflow
- Integrate real-time ultrasound with previously acquired CT, MR, PET, or ultrasound images
- Visually track your position during a scan
- Color-coded elastogram and quantitative measurements
- Dual or Single display option
- Measurements in kPa or m/s
- User selectable color maps
- Adjustable color box and ROI depth and size



GE Logiq P9 Ultrasound w/ Matrix Probe

Introducing the LOGIQ P9 ultrasound system from GE Healthcare?? a general imaging system designed for quick diagnostic exploration and full schedules. Whether the need is immediate triage or a comprehensive exam, you can rely on the budget friendly LOGIQ P9 system to provide the consistent image quality, comprehensive application coverage, and ease of use that enable clinicians to make timely, confident decisions.

Features:

- 21.5?" LCD Monitor
- 10.4"? Touch Screen
- Abd, OB/Gyn, Vascular, Breast, Thyroid Calculation Package
- Color Doppler
- PW Doppler
- Color Flow Mode
- Anatomical M-Mode
- Coded Contrast



Condition	Refurbished
-----------	-------------

Condition	Refurbished
-----------	-------------

GE Logiq P5 Ultrasound System

The GE Logiq P5 is an economical shared service ultrasound machine that is unique in it's price range by offering deep support for all applications from Cardiac to Pediatric, from 4D Obstetrics to Surgical or Elastography with an astounding 29 compatible transducers spread across every possible application. If it can be done with ultrasound, the Logiq P5 can do it.

Features:

- 65 lbs
- 15" Flat LCD Monitor on Articulating Arm
- Full-sized keyboard with user defined keys
- Active probe ports
- Integrated HDD
- Integrated DVD-RW Drive
- On-board storage for peripherals
- Harmonic Imaging
- Static 3D Mode: (BMode only, B+ Power Doppler Mode, B+ CFM Doppler Mode)
- High resolution Zoom
- Patient Information Database
- Real-time automatic Doppler Calculations



Condition	Refurbished
-----------	-------------

GE Vivid 7 Dimension Ultrasound

The GE Vivid 7 provides medical professionals new tools for detecting and diagnosing heart conditions in patients. It offers clear, detailed and remarkably lifelike images and it's ergonomic design makes it the ultrasound of choice for cardiovascular clinicians.



Features

- PW/CW/HPRF/Color/Power Doppler
- 2D/3D/4D ECHO imaging mode options
- MultiDimensional and Volume Imaging
- M-Mode, Anatomical M-Mode, and Color M-Mode
- B-Flow and Blood Flow Imaging
- Strain
- Advanced Q-Analysis
- 4D LV Volume Tool
- Ultra Definition Clarity one-touch image optimization
- Automated IMT Intima Media Thickness Measurement
- Stress Echo
- Contrast Imaging
- CrossXBeam, SRI Speckle Reduction Imaging
- Automatic Angle Correction
- Floating keyboard
- Shared Services with endocavity transducer available
- LCD Monitor available on some models
- High Resolution Zoom
- Depth range up to 30cm on some probes
- Frame rates up to 600 fps
- UltraDefinition/HD SRI Speckle Reduction Imaging
- LogiqView panoramic imaging
- Tissue Velocity Imaging TVI
- Tissue Tracking
- Tissue Synchronization option
- Strain Rate/Strain Imaging option
- Automated Function Imaging option
- Contrast Imaging and LVO Contrast option
- Adult and Pediatric TEE
- Intra-Operative probes

Condition	Refurbished
-----------	-------------

GE Vivid I BT12

The GE Vivid-I is a midrange portable ultrasound machine for cardiovascular applications. It has many powerful cardiovascular features that are unusual at this price point including both an adult and pediatric TEE probes.



Features:

- Monitor (inch) 15" LCD
- Tilt/Rotate Adjustable Monitor No
- Monitor Resolution
- Image Size Resolution 800*600
- Touch Screen (Inch) No
- Trackball or Trackpad Trackball
- CP Back-Lighting Yes
- Weight 11lbs(5kg)
- Probe Ports 1
- Battery O(up to 1hr)
- Sleep Mode (Quick Start)
- Maximum Depth of Field 30cm
- Minimum Depth of Field 0-2cm

Condition	Refurbished
-----------	-------------

GE VIVID Q Portable Ultrasound w/ Cart and Cardiac Probe

The GE Vivid Q portable cardiac ultrasound system is GE's top-of-the-line premium portable cardiac ultrasound machine. It features many of the high-end technologies found in the GE Vivid 7 and GE Vivid e9 console-based machines that are not found on the GE Vivid i ultrasound machine, specifically the M45-RS, and Automated Ejection-Fraction Calculation.



Features:

- 2D Imaging
- CW Doppler
- Smart Depth Technology
- Coded Octave Imaging
- Tissue Tracking (TT)
- Tissue Velocity Imaging (TVI)
- Automated Function Imaging (AFI)
- Tissue Synchronization Imaging (TSI)
- Intracardiac Echo Imaging (ICE)
- Integrated Stress Echo
- Deep penetration in Cardiac and Vascular/Small Parts imaging
- Excellent image quality

Condition	Refurbished
-----------	-------------

Did you know that we provide **maintenance and service** for every piece of equipment listed in this catalog?

GE VIVID S6 Ultrasound Cardiology Package w/ 3 transducers

The Vivid S6 system provides exceptional image quality and performance in a compact cardiovascular ultrasound package. A combination of the Vivid 7 image technology and the mobility of the Vivid i, the S6 provides streamlined productivity with excellent diagnostic capability.

Features:

- B, CFM, M, PW, PDI
- Anatomical M-Mode
- 17 High-Resolution TFT LCD Screen
- Coded Octave Imaging (COI)
- Speckle Reduction Imaging (SRI)
- Coded Phase Inversion (CPI)
- Auto Spectrum Optimization (ASO)
- Coded Harmonics
- TruScan Architecture (TruAccess, SmartScan, ComfortScan)



Condition	Refurbished
-----------	-------------

GE Voluson E6 Ultrasound System with HD Live OB/GYN Package

In keeping with GE's commitment to delivering quality ultrasound equipment, the GE Voluson E6 is one of the best 4D gynecological ultrasound machines on the market, combining advanced probe technology with innovative hardware and software architecture to yield exceptional image quality.

Features:

- 2D/3D/4D Contrast Imaging
- M-Mode
- M-Color Flow
- PW/CW Spectral Doppler and Color/Power/Tissue Doppler
- HD Flow
- B-Flow
- CrossXBeam
- SRI II HD Speckle Reduction Imaging
- Coded Excitation and Harmonics



Condition	Refurbished
-----------	-------------

Konica Minolta Sonimage HS1 Ultrasound

From the clinic to the bedside, the SONIMAGE HS1 delivers the superior image quality and needle visualization required for confident patient care decisions across a variety of MSK environments: orthopedics, sports medicine, physical medicine, and pain management.

Features:

- Portable, compact system
- Swivel 15" anti-glare monitor
- Lightweight ergonomic probes
- Intuitive touchscreen
- Simplified console
- Wireless connectivity
- Adjustable cart height Simple needle visualization
- Revolutionary transducer technology
- High resolution image quality and penetration
- Ergonomic design and efficient connectivity
- Display of fetal heart rate



Condition	Refurbished
-----------	-------------

Konica Minolta Sonimage P3 Handheld Ultrasound and Probe

The SONIMAGE™ P3 is a true portable ultrasound machine that gives clinicians the ability to do more for patients where and when they need it most – at the point-of-care. With its small footprint and weighing less than a pound, this handheld device can accelerate and improve interventions and decision making time.

Features:

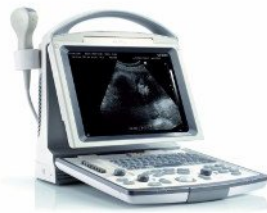
- FAST and eFAST
- Lung imaging – pleural fluid, thoracic and pleural motion
- Post-void residual bladder volume (automated measurements)
- Basic pregnancy assessments – confirmation scans, FHR, fetal position
- Basic internal organ imaging – gross gall bladder pathology
- Abdominal aortic aneurysm (AAA) Screening
- Localization of free fluid in the abdomen and lungs
- SONIMAGE VIEW PC/tablet software
- 4GB MicroSD Card
- Core muscle assessment – Transverse Abdominus, pelvic floor
- Touch screen and scroll wheel
- Display of fetal heart rate



Condition	Refurbished
-----------	-------------

Mindray DP-50 Ultrasound

Purified Harmonic Imaging for better contrast resolution providing clearer images with excellent resolution and less noise. iBeam permits use of multiple scanned angles to form a single image, resulting in enhanced contrast resolution and improved visualization. iClear? allows you to gain improved image quality based on auto structure detection



Features:

- Sharper & Continuous Edges
- Smooth Uniform Tissues
- Cleaner
- ?No echo areas
- Multi-Beam Formation: Maximum 4 times tasking for one transmitted beam, resulting in excellent time resolution and higher frame rate.
- iStorage: Directly transfer images and reports to PC via network cable
- iZoom: Gain instant full screen view on the click of a single key
- iStation: Mindray's unique Patient Information Management System allowing you to integrate, review, archive and retrieve patient data effectively
- iTouch: Gain instant auto image optimization in B mode on the click of a single key
- Sleek, streamlined, compact shape
- User friendly keyboard and controls
- Lightweight system for enhanced mobility
- High resolution, wide-angle 15"? LCD with tilt functionality for better viewing

Condition	Refurbished
-----------	-------------

Mindray M5 Ultrasound

The M5 Ultrasound delivers a full range of functionality in a portable, laptop sized package. Weighing about 13 pounds, the Mindray M5 Ultrasound system is capable of producing brilliant 1D color images with enhanced contrast and spatial resolution through tissue harmonic imaging. Thanks to its easy format, the Mindray M5 can be easily transported and can provide a wide range of application services to meet more medical occasions including in the operating room, out in the field, in ambulances, etc.



Features:

- High-resolution 15"? non-glare screen
- i-Touch - one button optimization
- Trapezoid
- Dual and Quad screen imaging
- Duplex / Triplex
- MBP- Increases resolution and frame rate by 4 times
- FTO- Increases soft tissue differentiation
- AVI- Distinguish tissue movement from blood flow
- i-Station- robust patient management system

Condition	Refurbished
-----------	-------------

Philips HD11 XE Ultrasound

The Philips HD11 XE ultrasound machine has gone above and beyond the features offered from the HD11, with the same capabilities and more. Such features include the stress echo option, anatomical M-mode, and Tissue Doppler Imaging (TDI). The HD11 XE's SonoCT technology has been clinically tested to provide superior images. The versatile Philips HD11XE is ideal for many settings such as hospitals, satellite clinics, and special practices.



Features:

- High-resolution LCD monitor with 4 active probe ports
- Multi-frequency, 4D, Convex, Micro-convex imaging
- Panoramic imaging
- XRES adaptive processing virtually eliminates speckle noise
- CrossXBeam spatial compounding
- Speckle Reduction Imaging (SRI)
- TruScan technology for immediate data storage
- 3D/4D

Condition	Refurbished
-----------	-------------

Philips iE33 Ultrasound

Keeping pace with the clinical needs of managing patients with cardiac disease, such as heart failure, valvular and coronary artery disease, and congenital heart disease, calls for exceptional levels of image quality, quantification and clinical performance. The iE33 intelligent echo system is addressing this growing requirement with complementary 2D and Live 3D imaging, quantification tools, and connected work solutions that help you answer the major questions related to cardiac disease management: structure, efficiency, size, and function.



Features:

- xMATRIX cardiac transducer with 3000 elements
- Automated Stress Echo
- Premium Image Quality
- Full Doppler functions and Live 3D TEE
- 20-inch high resolution articulating flat panel display
- Fully articulating control panel
- Live Xplane multiplane imaging
- Tissue Harmonics and Tissue Harmonic SonoCT

Condition	Refurbished
-----------	-------------

Did you know that we provide **maintenance and service** for every piece of equipment listed in this catalog?

Philips IU-22 Ultrasound with two probes

In the Philips IU22 ultrasound system, Philips uses volume imaging and the ViewForum workstation to view ultrasound in the same format as CT and MR. Exam times are reduced by as much as 38 percent while using the Philips IU22 ultrasound. The Philips IU22 model offers tissue aberration correction on breast transducers, body contrast-enhanced ultrasound for more definitive diagnosis, and exam time reduction with SmartExam.



Features:

- Height: (adjustable, maximum) 1626 mm (64 in), (minimum) 1397 mm (55 in)
- Width: 559 mm (22.0 in)
- Depth: 1092 mm (43 in)
- Weight: (no Peripherals) 156.8 kg (345 lbs.), approx. 480 lbs with packaging
- B, M, PW Doppler, Colorflow
- 17 Flat Panel Display
- STREAM Architecture
- PureWave Crystal Transducers
- 2D Imaging

Condition	Refurbished
-----------	-------------

Samsung Accuvix A30 Ultrasound

Samsung's Accuvix A30 Ultrasound System establishes a benchmark for imaging. Offering features such as the proprietary EZ Exam and ElastoScan, this system facilitates clinical decision-making and boosts diagnostic confidence. Its 21.5-inch large screen LED monitor combines with enriched 3D performance to deliver uncompromising image quality for increased detection rates.



Features:

- 2D, M-Mode, Color M-Mode
- Color/PW/Power/Spectral/Power Doppler
- 3D/4D imaging
- Directional Power Doppler Imaging
- 21.5" wide-screen High Definition LED flat-panel monitor 1,920 x 1080 pixels
- 9-inch LED touchscreen control
- Cardiac Measurements
- ECG
- SonoView image storage and retrieval
- EZ Scan
- DICOM

Condition	Refurbished
-----------	-------------

Samsung PT60A

This groundbreaking ultrasound system is uniquely engineered to meet the needs of the portable market and incorporates new features such as a 10.1 inch LED touch-screen and NeedleMate technology. With its premium performance, slim and compact size and ease of use, the PT60A is designed to satisfy all Point of Care Applications.



Features:

- B, CFM, M, PW, PDI
- 10.1" TFT LCD Screen
- NeedleMate
- S-Vue Transducers
- Beam Steering
- QuickScann 1
- 2 USB Port,
- 1 SDHC Card Slot, OB/Gyn, Abd, Small Parts, Vascular, MSK

Condition	Refurbished
-----------	-------------

SonoScape A6 with Biplane Transducer

The PC based computer technology and the reliable Linux operating system enable the SonoScape B/W ultrasound system to be more stable and flexible for operation. The value of the system can be promoted by the maintenance and upgrading of the software.



Features:

- Application: Abdominal, Gynecological, Obstetrical, Cardiology, Urological, Vascular, Small parts
- Sweep method: Electronic Convex Sector, Electronic Linear, Biplane Plane Probe
- Image Modes: B, B+M, M, Dual B, Quad Display, Tissue Harmonic Image (THI)
- Image standard features
 - Frame rate: 60 frames/sec
 - Display Gray Scale: 256 level
 - Scanning lines: 256 in B mode, 512 in M mode.
 - Frequency range: 2.0-12.0MHz
 - Dynamic range: 158db
- Cine: 256 frames (B-mode) measurable when recalled

Condition	Refurbished
-----------	-------------

Sonoscape A6

The SonoScape A6 portable ultrasound machine is among the best imaging black and white portable ultrasound machines for sale. The PC based computer technology and the reliable Linux operating system enable the SonoScape B/W ultrasound system to be more stable and flexible for operation.



Features:

- 12" LCD Display
- 2D, M-Mode
- THI Tissue Harmonics Imaging
- Dual USB 2.0
- Internal Flash memory for image and patient data storage
- PDF Reporting
- Customizable controls and buttons
- S-Video and VGA out
- DICOM 3.0
- Available cart and footswitch

Condition	Refurbished
-----------	-------------

Sonosite 180 Plus with Vaginal and Abdominal Curved Transducer

The Sonosite 180 Plus ultrasound machine is an extremely convenient scanning system. With a handle on one end, this machine is literally a hand-held ultrasound machine. But, there is a lot of power packed into that little machine.



Features:

- Portable Ultrasound System
- 5" TFT Color Liquid Display Crystal Screen
- 2D/Zoom
- Color Power Doppler
- PowerMap Directional Color Power Doppler
- Cine Loop
- Rechargeable Lithium Ion Battery
- Weight: 5.7 lbs

Condition	Refurbished
-----------	-------------

Sonosite M Turbo

Our most versatile system for abdominal, nerve, vascular, cardiac, venous access, pelvic, and superficial imaging. The M-Turbo® ultrasound system gives you striking image quality with sharp contrast resolution and clear tissue delineation. This ultrasound equipment lets you visualize detail, improving your ability to differentiate structures, vessels and pathology.



Features:

- Display: 10.4" diagonal LCD (NTSC or PAL)
- SonoADAPT Tissue Optimization
- SonoHD Imaging Technology
- SonoMB Multi-beam Imaging
- Onboard Image and Clip Storage/Review
- Capture quality video clips up to 60 seconds long
- All-digital architecture
- Touchpad and cursor controls
- Ethernet Port
- USB, Audio, Video in/out port

Condition	Refurbished
-----------	-------------

Sonosite Micromaxx Ultrasound

The SonoSite MicroMaxx remains one of our top choices for portable ultrasounds, offering the image quality and portability necessary for a range of applications, from standard point-of-care to emergency. In terms of the SonoSite MicroMaxx price, this portable ultrasound is also one of the least expensive, yet easy and reliable solutions.



Features:

- 2D/M-Mode/Directional Color Power Doppler/ Power Doppler
- 2X Pan/Zoom
- Tissue Harmonic Imaging
- Broadband, multifrequency imaging
- 128 Imaging channels
- Cine review
- OB/GYN/Cardiac/Vascular/MSK calc and preset packages available
- Mini-Dock available for expanded connectivity options
- Fully Digital
- DICOM

Condition	Refurbished
-----------	-------------

Did you know that we provide **maintenance and service** for every piece of equipment listed in this catalog?

Sonosite S-Nerve With Probe and Printer

The Sonosite S Series? ultrasound machines were the industry?s first mountable ultrasound. They offer a zero footprint and can be mounted on a wall, the ceiling, or a stand.

S-Cath. Custom-designed for radiologists, the S-Cath? ultrasound system requires very little space and provides sharp image quality using just two controls.

S-FAST. Designed for emergency physicians, the S-FAST? ultrasound system offers amazingly clear image quality and a fast, easy way to transport patient data.

S-ICU. The immediacy of the ICU requires an ultrasound system that moves as quickly and efficiently as you do. The S-ICU? ultrasound system helps clinicians see more, and see better. Faster.

S-MSK. Custom designed for clinicians working with musculoskeletal pathology, the S-MSK? ultrasound system is surprisingly easy to learn and use, allowing you the opportunity improve care and decrease complications in interventional procedures, such as injections and aspirations.

S-Nerve. Anesthesiologists want fewer buttons, menus, and dials. You can operate the S-Nerve? ultrasound system using just two controls and one pair of hands, and its strikingly clear image quality lets you see structures as structures and edges as edges.

S-Women?s Health. Designed specifically for breast surgeons and women?s health clinicians, the S-Women?s Health? ultrasound system features only two controls while also achieving optimum image quality.



Condition	Refurbished
-----------	-------------

Sonosite Titan

The SonoSite Titan portable ultrasound machine is an excellent low-cost, durable, color Doppler ultrasound machine. Only available as a used ultrasound machine, the Titan remains a solid choice for those seeking a good portable ultrasound machine with Doppler capabilities.

Features:

- 2-D, M-Mode, PW Doppler
- Directional Color Power Doppler
- DICOM Compatibility
- Cardiac, OB/GYN, Vascular, and volume calculations
- Optional MiniDock for connecting to a PC, printer or other external devices
- Length: 11/8 in
- Width: 10.9 in
- Depth: 3.0 in
- Weight: 8.3 lbs



Condition	Refurbished
-----------	-------------

Toshiba APLIO 500 CV ultrasound Imaging System

Every patient is unique, many are challenging. Aplio 500 delivers outstanding performance for superior clinical precision, diagnostic confidence and departmental productivity. Crystal clear images consistently across a wide variety of clinical specialties and an abundance of expert tools ensure you can always get your diagnostic answer quickly and reliably?? from early detection to treatment and follow up.

Features:

- Quick Assist protocols
- 2D wall motion tracking
- Contrast Harmonic imaging
- Flex M-Mode
- Foot Switch
- Gel Warmer



Condition	Refurbished
-----------	-------------



EXPAND

Your Medical Sales Relationship

PRODUCTS

Autoclaves & Sterilizers
Washer Disinfectors
Surgical & Exam Lighting
Surgical & Exam Tables Stretchers
& Patient Transportation
Vital Sign & Patient Monitors
Blanket/Fluid Warmers
Scrub Sinks & Accessories
Defibrillators
Electrosurgical Units
Surgical Endoscopy
Imaging
Tourniquet Systems
Infusion & Syringe Pumps

Auxo Medical is focused on building quality relationships with our clients to ensure customer satisfaction and long term success.

Every customer need is based on a unique situation. You can expect Auxo Medical to tailor a plan to support your situation every time — with fast answers, and a solution designed with equipment, installation and maintenance services that match your needs.

Our focus is on delivering the highest quality refurbished and new equipment. We provide consistent value, often saving as much as 50% off the price of new systems.

The end result you can expect will be same every time, quality equipment and service, coupled with market leading value, provided by a knowledgeable sales staff.



auxoMEDICAL

5401 Distributor Drive, Richmond VA 23225

Toll Free: 888-728-8448 | Local: 804-233-4424 | Fax: 804-233-4204

Sales: sales@auxomedical.com | Support: ops@auxomedical.com

Product	Page
Aloka Alpha 5.....	1
Aloka ProSound Alpha 10.....	1
BK Medical Falcon.....	1
Chattanooga Medical 2 Channel Combination Unit.....	1
Chison EBIT 50 Ultrasound with 18mhz Probe.....	2
Chison ECO3.....	2
Chison ECO6.....	2
Chison Sonobook 6.....	3
Chison Sonotouch 30.....	3
Edan Acclarix AX8.....	3
Edan DUS 60 VET.....	3
GE Logiq Book XP.....	4
GE Logiq E with 2 Probes, Abdominal and, Printer and Cart.....	4
GE Logiq E9 XDClear.....	5
GE Logiq P5 Ultrasound System.....	5
GE Logiq P9 Ultrasound w/ Matrix Probe.....	5
GE Logiq e.....	4
GE VIVID Q Portable Ultrasound w/ Cart and Cardiac Probe.....	6
GE VIVID S6 Ultrasound Cardiology Package w/ 3 transducers.....	7
GE Vivid 7 Dimension Ultrasound.....	6
GE Vivid I BT12.....	6
GE Voluson E6 Ultrasound System with HD Live OB/GYN Package.....	7
Konica Minolta Sonimage HS1 Ultrasound.....	7
Konica Minolta Sonimage P3 Handheld Ultrasound and Probe.....	7
Mindray DP-50 Ultrasound.....	8
Mindray M5 Ultrasound.....	8
Philips HD11 XE Ultrasound.....	8
Philips IU-22 Ultrasound with two probes.....	9
Philips iE33 Ultrasound.....	8
Samsung Accuvix A30 Ultrasound.....	9
Samsung PT60A.....	9
SonoScape A6 with Biplane Transducer.....	9
Sonoscape A6.....	10
Sonosite 180 Plus with Vaginal and Abdominal Curved Transducer.....	10
Sonosite M Turbo.....	10
Sonosite Micromaxx Ultrasound.....	10
Sonosite S-Nerve With Probe and Printer.....	11
Sonosite Titan.....	11
Toshiba APLIO 500 CV ultrasound Imaging System.....	11

Did you know that we provide **maintenance and service** for every piece of equipment listed in this catalog?

Auxo Medical is providing the highest quality of service and refurbished equipment and ensuring that our customers meet the highest operational standards of modern medical technology.

Here are a few of our existing regional and national customers!

CUSTOMER

Snapshot

DIRECT EQUIPMENT CUSTOMERS

VCU Health System
HCA Healthcare
National Spine and Pain Centers
Sentara Healthcare

National Institute of Health (Bethesda) King's
Daughters Children's Hospital INNOVA Hospital System
Northside Hospital (Atlanta)



EQUIPMENT DISTRIBUTORS

Mckesson Medical Surgical
Moore Medical
SpectraMed Solutions

Surgery Center Services of America
Chesapeake Healthcare Planning
Sodexo USA



STERILIZATION/BIOMEDICAL SERVICE CUSTOMERS

HCA Healthcare
VCU Health System
Bon Secours Health System
Old Dominion University Biology Dept
VCU Massey Cancer Center
Virginia Eye Institute.
College of William and Mary
Children's Hospital of King's
Daughters
Virginia Eye Institute

OrthoVirginia
Novozymes Biological
Aramark
Blue Ridge Orthopedics
Virginia Biotechnology Research Park
Hess Orthopedics
Tidewater Physicians Multispecialty Group
SurgCenter Development
McGuire VA Hospital/Dept. of Vet. Affairs



EQUIPMENT WE SERVICE

Autoclaves

AMSCO
COX
MIDMARK
PELTON & CRANE
SCICAN
TUTTNAUER

Sterilizer

PRIMUS
SKYTRON
STERIS
GETINGE
BETASTAR
CONTINENTAL

Boilers

REIMERS ELECTRASTEAM
STERIS
CHROMALOX
PACIFIC STEAM
ELECTROSTEAM
SUSSMAN

Washer Disinfectant

STERIS
GETINGE
STEELCO
BELIMED
MIELE
SCICAN
SCIENTEK
SKYTRON

Surgical Tables

SURGICAL TABLES INC.
MIDMARK
SKYTRON
STERIS
MAQUET
STRYKER
OSI

Exam Tables

UMF MEDICAL
MIDMARK
BREWER
CLINTON INDUSTRIES

Imaging Tables

SURGICAL TABLES INC.
OAKWORKS
MEDSTONE ARCOMA
BIODEX
STERIS
OSI

Stretcher

HILL-ROM
MAC MEDICAL
MIDMARK
STRYKER
HAUSTED
GENDRON

Hospital Beds

HILL-ROM
STRYKER

Infusion Pumps

BAXTER
B. BRAUN
ALARIS
ABBOTT
HOSPIRA

Syringe Pumps

BAXTER
MEDFUSION
B. BRAUN
ALARIS
ABBOTT
HOSPIRA

Patient Monitors

BIOLIGHT
CRITICARE
MINDRAY/DATASCOPE
GE/DATEX-OHMEDA
EDAN
PHILIPS
WELCH ALLYN

Anesthesia Monitors

BIOLIGHT
MINDRAY/DATASCOPE
GE/DATEX OHMEDA
EDAN
PHILIPS

Ultrasonic Cleaners

STEELCO
STERIS
CREST ULTRASONICS
DURASONIC
SHARPERTEK
SONIC SYSTEMS INC

Surgical lights

BURTON
NUVO
SKYTRON
STERIS
MAQUET
PHILIPS
BOVIE
MEDICAL ILLUMINATION

Exam Lights

BOVIE MEDICAL CORP
SKYTRON
STERIS
MIDMARK
NUVO
PHILIPS

Anesthesia Machines

GE

Ventilators

Surgical Headlights

LUXTEC
GULF FIBROPTICS
WELCH ALLYN

EKG/ECG Machines

BURDICK
EDAN DIAGNOSTICS
GE
WELCH ALLYN
ELI

Scrub Sinks

MAC MEDICAL
STERIS AMSCO

Defibrillators

PHILIPS
ZOLL MEDICAL
MEDTRONIC

AEDs

CARDIAC SCIENCE
DEFIBTECH
PHILIPS
ZOLL MEDICAL
MEDTRONIC

Incubators

HILL-ROM
STRYKER

Fluid & Blanket

Warmer

CONTINENTAL METAL
MAC MEDICAL
SKYTRON
STERIS
BLICKMANN
OLYMPIC
PEDIGO

Electrosurgical Units

AARON BOVIE
BUFFALO
CONMED
COVIDIAN VALLEYLAB
ERBE
ETHICON
MEDTRONIC

Light Sources

LUXTEC
STRYKER
CONNED
WOLF
OLYMPUS
SMITH & NEPHEW

Freezers

Centrifuges

Warming Baths

BASIC SERVICES PROVIDED

- Equipment
- Inventories
- Equipment
- Acquisition &
- Liquidation
- Electrical Safety
- Inspections
- Equipment
- Repair
- Incoming
- Inspections
- 24 Hour support
- Periodic
- Inspections &
- Maintenance
- Equipment
- Calibrations

CONTACT

Tanner Seese
Director of Sales

804-233-4424
www.auxomedical.com
sales@auxomedical.com

 **auxo**MEDICAL