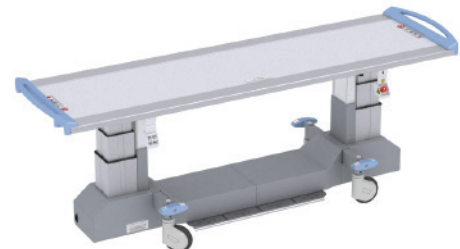


Mobile Radiographic Tables

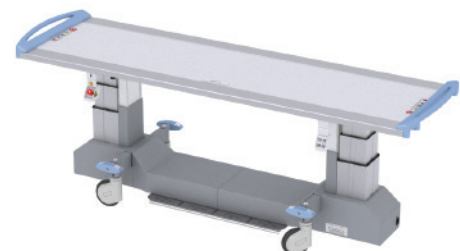
Narrow radiographic table on wheels with four-way floating tabletop and motorized elevation.
Available with laminated or carbon fiber tabletop

- Mobile table with variable height and four-way float tabletop.
- Fast, easy patient positioning.
- Specially designed radiography table for use with u-arm and straight-arm radiographic systems
- Battery powered, charge lasts for days without recharging.

Table is designed to accommodate a variety of table based radiographic imaging, enhancing exam flexibility and ease of use with compact single detector x-ray systems in confined spaces.



Laminated top (standard)
Part #800051359



Carbon fiber top (optional)
Part #800051360

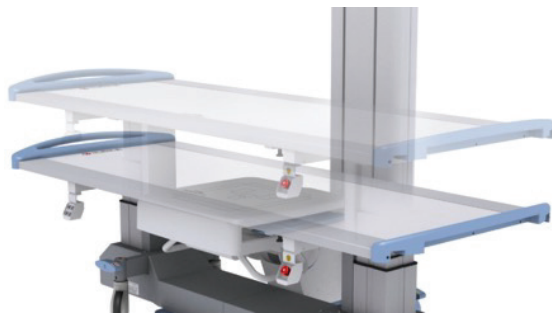
Specifications

Patient maximum load	551 lbs. (250 Kg)
Dimensions (L x W)	92.7 x 25.6" (235.5 x 65 cm)
Tabletop travels:	
· Longitudinal	38.6", ±0.4" (98.2 cm, ±1 cm)
· Transversal	8.27", ±0.4" (21 cm, ±1 cm)
· Vertical	157.5", 23.6" (400 cm, ±6 cm)
- Maximum height	39.3", ±1.18" (100 cm, ±3 cm)
- Minimum height	23.6", ±1.18" (60 cm, ±3 cm)
Tabletop radiolucent area: (W x deep)	82.7"x18.1" (210x46 cm)
Tabletop attenuation	< 1,2 mm equival. Al. a 100 KV
Tabletop composition	Laminated or carbon fiber
Control pedals	4
Anti-turnover pins	2, optional
Table fixation pins and housings	Optional
Rechargeable batteries	4
Battery autonomy	16H with a ratio of 1% elevating movements or ±100 vertical movements
Recharging time	12H Maximum. Recharging is activated when the equipment is plugged 080 pix

Mobile Radiographic Tables

Feature Highlights:

- Simple ergonomic and robust design to withstand high volume imaging
- Ergonomic handles for safe, easy travel and patient support
- 4-way floating table top - functions without power
- 4 locking swivel wheels - for safe, easy travel maneuverability and secure locked use.
- Electromagnetic and mechanical brakes when power is OFF.



- Foot pedals - control tabletop movements (transversal, longitudinal, raising and lowering).
- Carbon fiber tabletop - low attenuation for high contrast radiographic images with minimal patient dose. (option)
- Emergency OFF safety switch at table side
- Auto-positioning - site preferred preset height can be configured during installation
- Floor pins - prevent table from tipping over and mark repeatable preferred floor location.
- 4 rechargeable batteries - built into the table base.
- 3-color battery level indicator - at controls with audible warning when batteries reach lowest discharge level.
- Battery operation - lasts up to 16 hours
- Plug in use - table can be operated while plugged into standard 110 VAC outlet
- Recharging time - maximum, 12 hours

FIXED HEIGHT MOBILE PATIENT TABLE

Specifications

Fixed height, fixed top, mobile tables

Laminated table	Laminated structure table top
Patient capacity	352.7 lbs. (160 kg)
Dimensions (L x W x H)	78.7 x 25.6 x 27.6" (200 x 65 x 70 cm)

OPTIONS

Carbon fiber table	Carbon fiber top
Patient capacity	441 lbs. (200 kg)



Laminated top (standard)
Part #800051332



Carbon fiber top (optional)
Part #800051331

Distributed by: FUJIFILM Healthcare Americas Corporation

81 Hartwell Avenue, Suite 300, Lexington, MA 02421

fujifilmhealthcare.com

800.431.1850

© FUJIFILM Healthcare Americas Corporation

DOC-0059910-A

FUJIFILM
Value from Innovation